

# SuperSecure™ II-XLS 45-120

45-120 Minute  
Clear, Forced Entry and  
Fire Resistant Rated Glazing

## PRODUCT ADVANTAGES



- ▶ The only wire-free, fire resistant rated security glazing to meet CDCR 860-14a testing requirements and ASTM F1915 Grades 1-4.
- ▶ Meets ASTM E119 / UL 263 / NFPA 251 requirements with hose stream requirements.
- ▶ Largest tested and listed sizes for wire-free, fire resistant rated security glazing.
- ▶ High STC ratings.
- ▶ 5 year manufacturer's warranty.
- ▶ USA manufactured for fast lead times and competitive pricing.

## PRODUCT SIZES

### Largest Sizes for Doors, Openings and Walls

Fire Rating	Max. CV Area	Max. CV Width	Max. CV Height	Stops
45-60 minutes	4,952 in. <sup>2</sup> (3.19 m <sup>2</sup> )	96 in. (2.44 m)	96 in. (2.44 m)	1 in. (25 mm)
90-120 minutes	4,876 in. <sup>2</sup> (3.15 m <sup>2</sup> )	96 in. (2.44 m)	96 in. (2.44 m)	1 in. (25 mm)

Please call SAFTI FIRST for custom sizes exceeding 96 in. (2.44 m) up to 124 in. (3.15 m)

## INTERTEK/WHI TESTED AND CERTIFIED



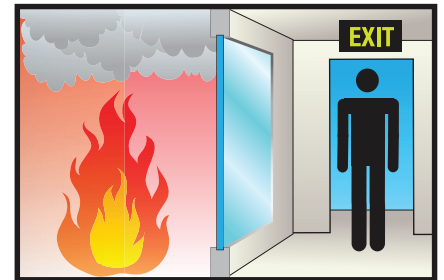
SuperSecure II-XLS is listed and labeled by Intertek/Warnock-Hersey Inc., a nationally recognized testing laboratory approved by OSHA.

## APPROVALS

UL, UL 10B, UL 10C, UL 263, NFPA 251, NFPA 252, NFPA 257, ASTM E119, ASTM E152, ASTM E163, ASTM E2074, ASTM E2010-01, ASTM F1233, ASTM F1915, CPSC 16 CFR 1201 Cat. II, CDCR 860-14a.

## FIRE RESISTIVE

Contains smoke and flames, and blocks the passage of radiant heat.



## SPECIFICATIONS

For thickness and weight see reverse side.

### Appearance:

Clear, non-wired glazing

### Fire Rating:

45-120 minutes with hose stream  
Meets ASTM E119 / UL 263 / NFPA 251

### Impact Safety Rating:

CPSC 16 CFR 1201 Cat. I and II

### Forced Entry Rating:

CDCR 860-14a testing requirements & ASTM F1915 Grades 1-4

### 3-Part Specifications:

Available at

[www.safti.com/specifications](http://www.safti.com/specifications)



Made in the USA

# SuperSecure™ II-XLS 45-120

45-120 Minute  
Clear, Forced Entry and  
Fire Resistive Rated Glazing

## SPECIFICATIONS (CONTINUED)

All dimensions and weights are nominal

### CDCR

Fire Rating	Approx. Thickness	Approx. Weight
45 minutes	1.375 in. (35 mm)	12 lb/ft <sup>2</sup> (58.59 kg/m <sup>2</sup> )
60 minutes	1.75 in. (44 mm)	13.5 lb/ft <sup>2</sup> (65.91 kg/m <sup>2</sup> )
90-120 minutes	2.125 in. (54 mm)	18 lb/ft <sup>2</sup> (87.88 kg/m <sup>2</sup> )

### ASTM Grade 1 (60 min. Attack)

Fire Rating	Approx. Thickness	Approx. Weight
45 minutes	1.75 in. (44 mm)	16.3 lb/ft <sup>2</sup> (79.58 kg/m <sup>2</sup> )
60 minutes	2.125 in. (54 mm)	17.3 lb/ft <sup>2</sup> (84.47 kg/m <sup>2</sup> )
90-120 minutes	2.5 in. (64 mm)	20.3 lb/ft <sup>2</sup> (99.11 kg/m <sup>2</sup> )

### ASTM Grade 2 (40 min. Attack)

Fire Rating	Approx. Thickness	Approx. Weight
45 minutes	1.5 in. (38 mm)	14.16 lb/ft <sup>2</sup> (69.14 kg/m <sup>2</sup> )
60 minutes	1.875 in. (48 mm)	15.16 lb/ft <sup>2</sup> (74.02 kg/m <sup>2</sup> )
90-120 minutes	2.25 in. (57 mm)	18.16 lb/ft <sup>2</sup> (88.66 kg/m <sup>2</sup> )

### ASTM Grade 3 (20 min. Attack)

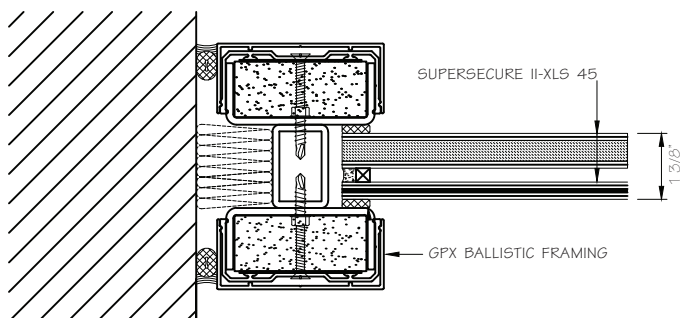
Fire Rating	Approx. Thickness	Approx. Weight
45 minutes	1.375 in. (35 mm)	12 lb/ft <sup>2</sup> (58.59 kg/m <sup>2</sup> )
60 minutes	1.75 in. (44 mm)	13.5 lb/ft <sup>2</sup> (65.91 kg/m <sup>2</sup> )
90-120 minutes	2.125 in. (54 mm)	18 lb/ft <sup>2</sup> (87.88 kg/m <sup>2</sup> )

### ASTM Grade 4 (10 min. Attack)

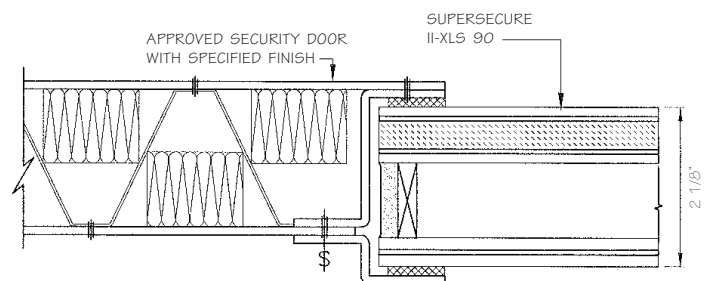
Fire Rating	Approx. Thickness	Approx. Weight
45 minutes	1.25 in. (32 mm)	13.1 lb/ft <sup>2</sup> (63.96 kg/m <sup>2</sup> )
60 minutes	1.625 in. (41 mm)	14.1 lb/ft <sup>2</sup> (68.84 kg/m <sup>2</sup> )
90-120 minutes	2 in. (51 mm)	17.1 lb/ft <sup>2</sup> (83.49 kg/m <sup>2</sup> )

## TYPICAL DETAILS More details available at [www.safti.com/details](http://www.safti.com/details)

### SuperSecure II-XLS 45 in GPX Ballistic Framing (CDCR)



### SuperSecure II-XLS 90 in approved security door framing (CDCR)



The information provided herein is for general reference only and is subject to change without notice. Please visit [www.safti.com](http://www.safti.com) for the most up to date information.

© SAFTI FIRST March 2015