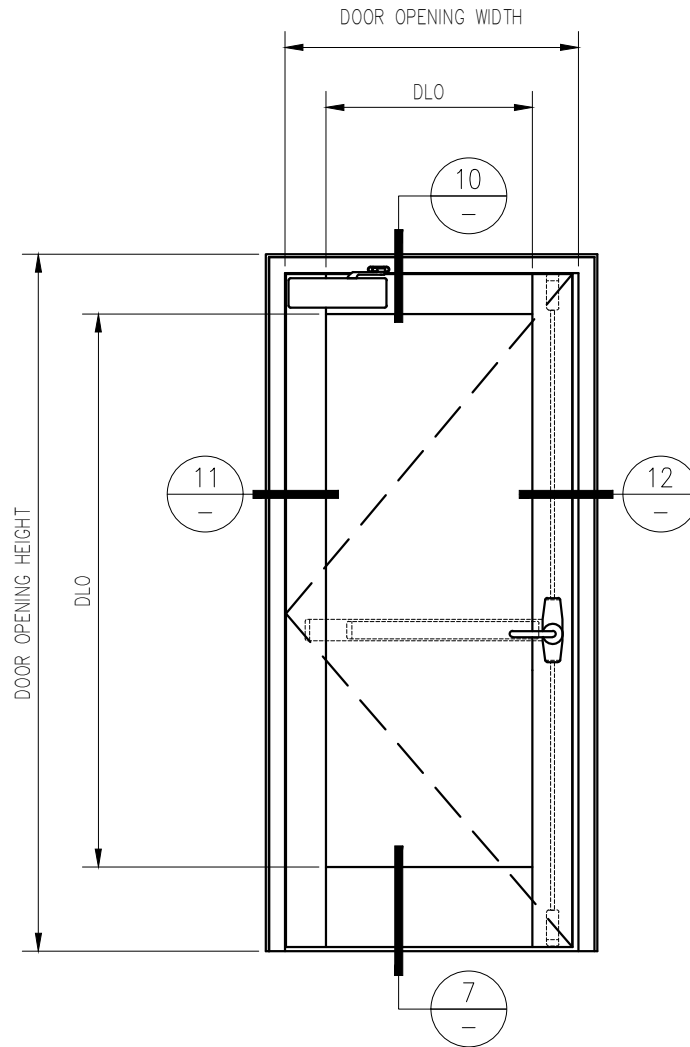


90 MINUTE FIRE RESISTIVE GPX SINGLE DOOR

—EXTERIOR APPLICATION—

For more details, please visit www.safti.com



GPX - DC - 90P - 11/11 - 101

SAFTIFIRST™
FIRE RATED LADING SOLUTIONS Since 1982
SUITE 12 TEL: (415) 824-4900
BRISBANE, CA FAX: (415) 824-5900
94005

SuperLite™ II-XL
GPX ARCHITECTURAL
SERIES

DATE:

DRAWN:

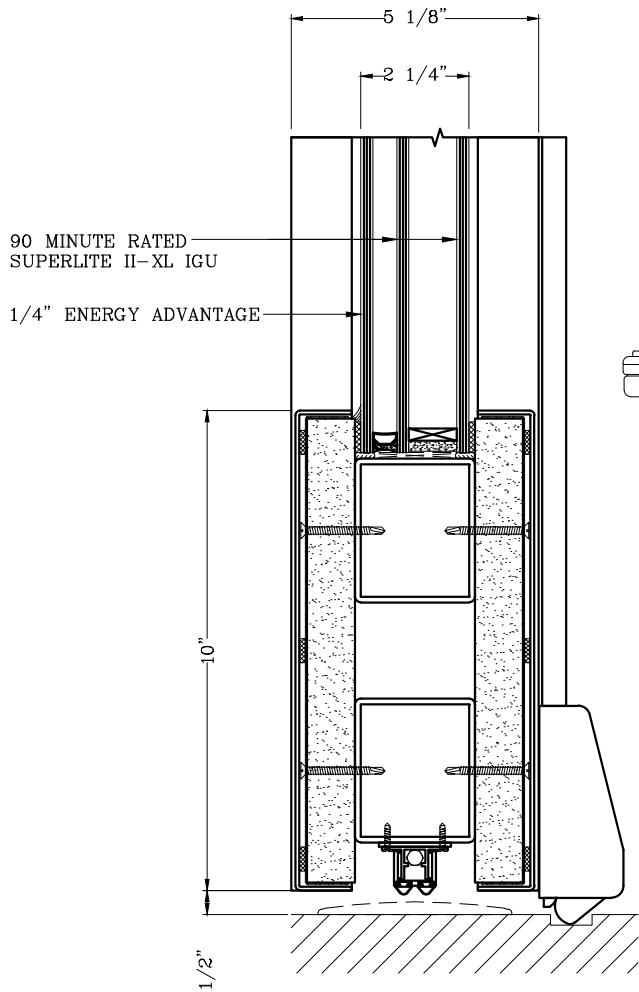
SCALE:

These details are subject to change without notice.

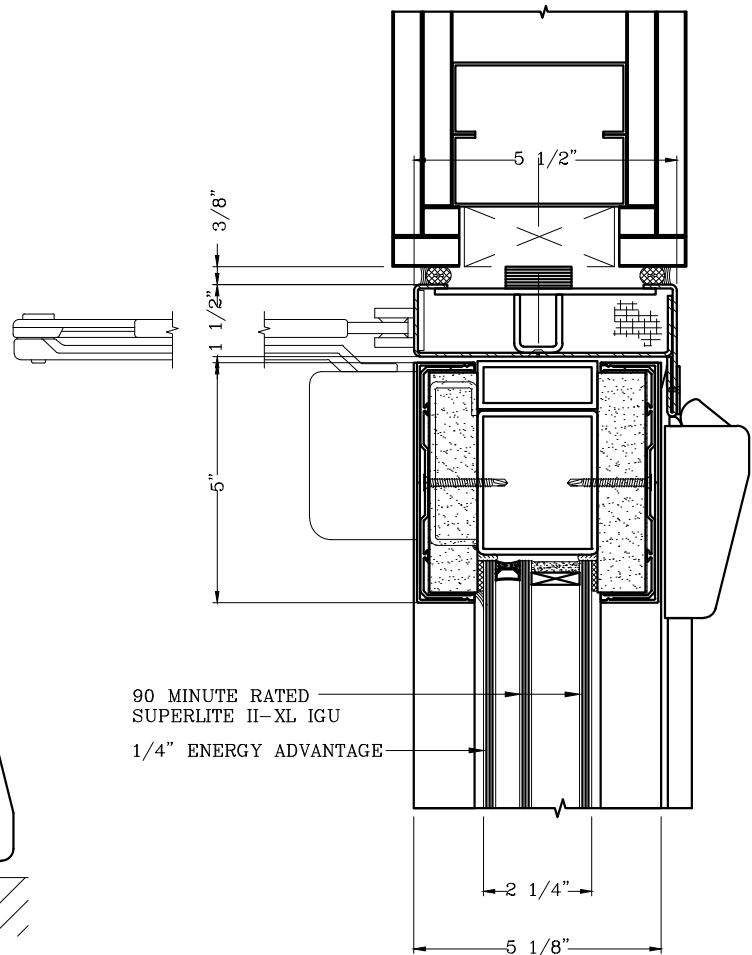
90 MINUTE FIRE RESISTIVE GPX SINGLE DOOR

—EXTERIOR APPLICATION—

For more details, please visit www.safti.com



7 DOOR BOTTOM RAIL DETAIL



10 DOOR TOP RAIL DETAIL

SAFTIFIRST™
 FIRE RATED GLAZING SOLUTIONS Since 1982
 SUITE 12 TEL: (415) 824-4900
 BRISBANE, CA FAX: (415) 824-5900
 94005

SuperLite™ II-XL
GPX ARCHITECTURAL
SERIES

DATE:

DRAWN:

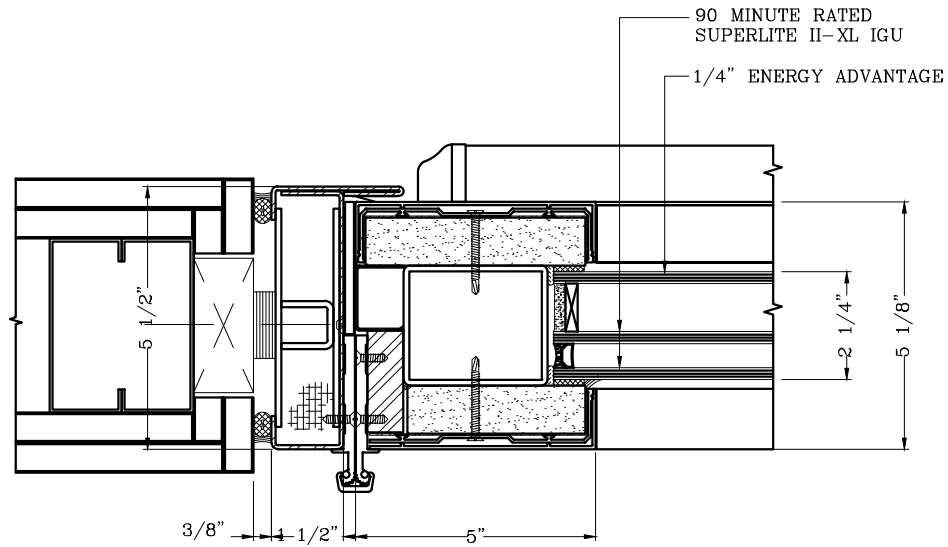
SCALE:

These details are subject to change without notice.

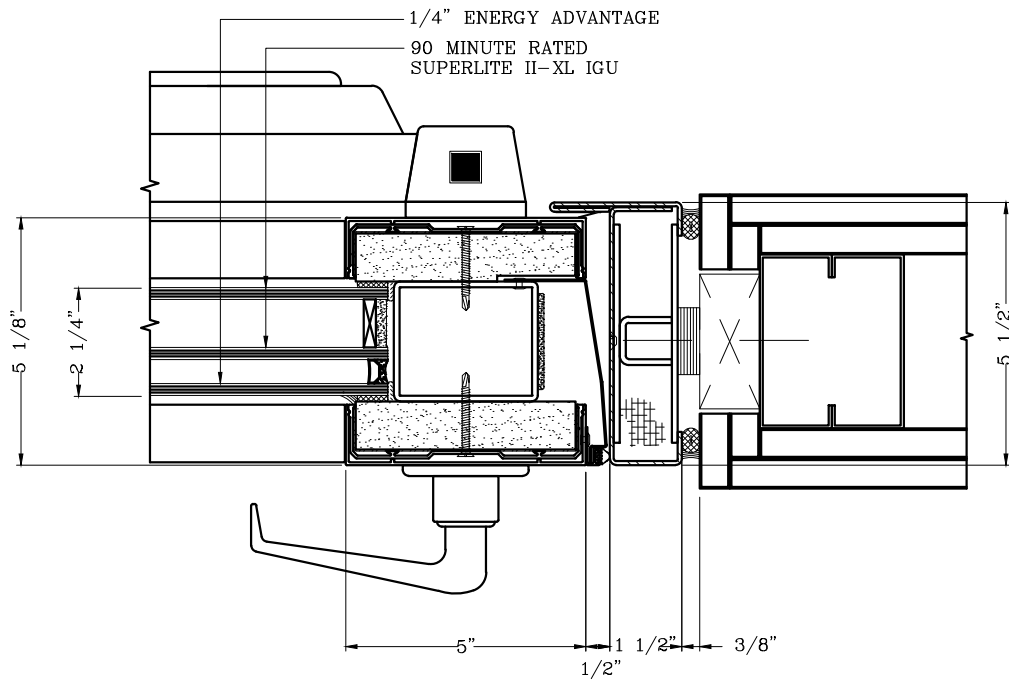
90 MINUTE FIRE RESISTIVE GPX SINGLE DOOR

-EXTERIOR APPLICATION-

For more details, please visit www.safti.com



11 DOOR JAMB at HINGE



12 DOOR MEETING STILES DETAIL

SAFTIFIRST™
 FIRE RATED GLAZING SOLUTIONS Since 1982
 SUITE 12 TEL: (415) 824-4900
 BRISBANE, CA FAX: (415) 824-5900
 94005

SuperLite™ II-XL
GPX ARCHITECTURAL
SERIES

DATE:

DRAWN:

SCALE:

These details are subject to change without notice.