

SuperLite™ II-XLM 45

20-45 Minute Fire Resistive
Multilaminare Glazing

PRODUCT ADVANTAGES



- ▶ Fire resistive multilaminare glazing offering maximum fire and safety with hose stream for 20-45 minute openings and doors.
- ▶ Meets ASTM E-119 for full radiant heat protection and CPSC Cat. II (400 ft. lbs.) impact safety requirements.
- ▶ Can be used in interior and exterior applications.
- ▶ Optically clear glazing without wires or tints.
- ▶ Available in custom architectural make-ups including energy-saving insulated units, decorative, security and more.
- ▶ Can be easily incorporated in GPX Architectural Series Framing, GPX SNAPCAP or GPX Builders Series Fire Protective Framing for a complete fire resistive assembly.
- ▶ 5 year manufacturer's warranty.
- ▶ Fabricated in the U.S.A. for fast lead times.

Large Sizes for Doors, Sidelites, Windows and Transoms

Fire Rating	Max. CV Area	Max. CV Width	Max. CV Height	Stops
20-45 minute doors	2,747 in. ² (1.77m ²)	58-3/4 in. (1.49 m)	58-3/4 in. (1.49 m)	5/8 in. (16 mm)
20-45 minute windows and sidelites	4,608 in. ² (2.97m ²)	96 in. (2.4 m)	96 in. (2.4 m)	5/8 in. (16 mm)

UL AND INTERTEK TESTED AND CERTIFIED



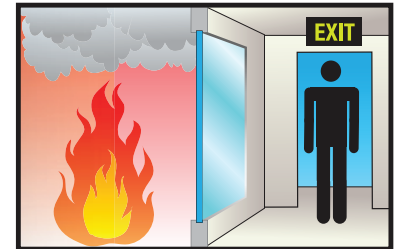
SuperLite II-XLM is listed and labeled by Intertek and Underwriters Laboratories, nationally recognized testing laboratories approved by OSHA.

APPROVALS

UL 9, UL 10B, UL 10C, UL 263, NFPA 80, NFPA 251, NFPA 252, NFPA 257, ASTM E119, ASTM E152, ASTM E163, ASTM E2074, ASTM E2010-01, CPSC 16 CFR 1201 Cat. II, ANSI Z97.1, ULC CAN4-S101, ULC CAN4-S104, ULC CAN4-S106.

FIRE RESISTIVE

Contains smoke, flames and blocks the passage of radiant heat.



SPECIFICATIONS

Thickness: 5/8 in. (16 mm) standard

Weight: 8.2 lbs./sq. ft. (39 kg/m²) in 5/8 in. (16 mm) standard

Sound Reduction: Rw=39 dB

Fire Rating: 20-45 minutes with hose stream
Meets ASTM E119 and NFPA 251

Impact Safety Rating:
CPSC 16 CFR 1201 Cat. I and II,
ANSI Z97.1

Light Transmission: 85%

R-value: 1.09

U-value: 0.915

3-Part Specifications:

Available at

www.safti.com/specifications

SuperLite™ II-XLM 45

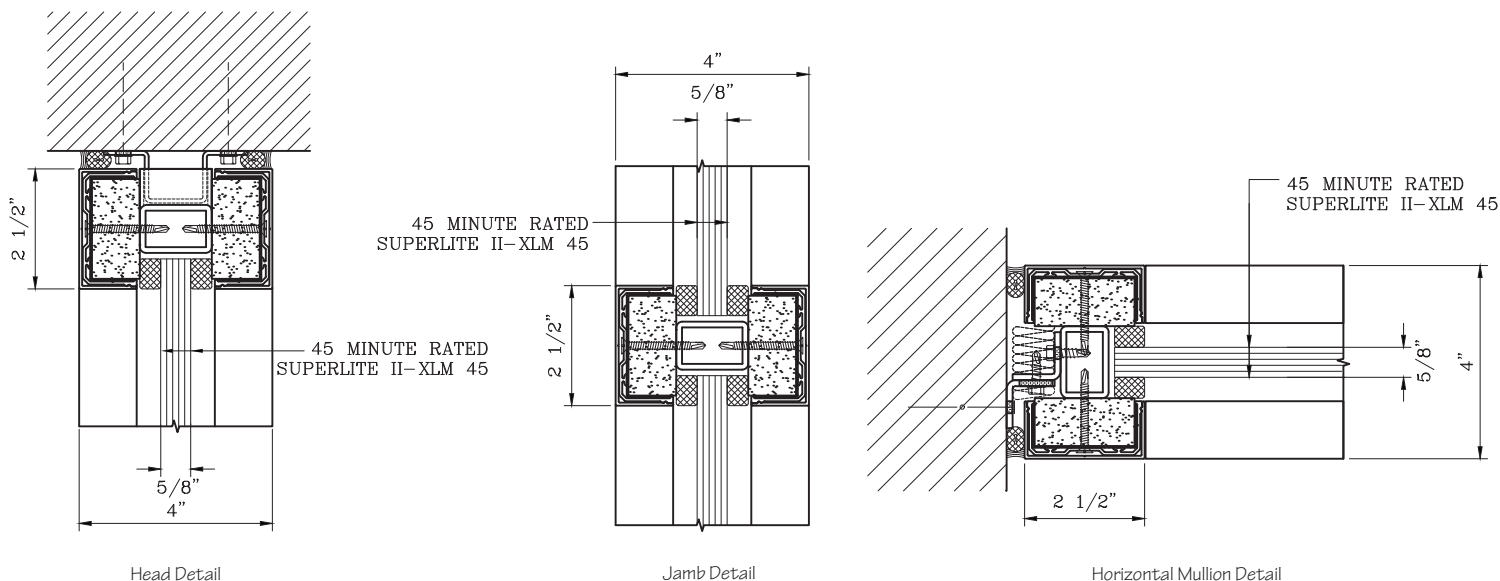
20-45 Minute Fire Resistive
Multilaminare Glazing



SuperLite II-XLM 45 in a 1-hour wall

TYPICAL DETAILS *More details available at www.safti.com/details*

SuperLite II-XLM 45 in GPX Architectural Series Framing



The information provided herein is for general reference only and is subject to change without notice. Please visit www.safti.com for the most up to date information.

© SAFTI FIRST January 2017

www.safti.com

SAFTI FIRST™
SAFETY AND FIRE TECHNOLOGY INC.

888.653.3333