

PRODUCT ADVANTAGES



FIRE RATED



THERMAL SHOCK



POSITIVE PRESSURE

- ▶ Full vision, 20 minute stile and rail aluminum door.
- ▶ Glazed with SuperLite I (20 minute clear, specialty tempered safety glazing). SuperLite I is also available with Starphire[®] Ultra-Clear Glass by PPG, and various glass patterns.
- ▶ Tested to NFPA 252 and UL 10C with positive pressure.
- ▶ Single and Pair Doors up to 4 ft. x 9 ft. (1.22 m x 2.74 m).
- ▶ 5 in. (127 mm) stile, 5-1/2 in. (139.7 mm) top rail, 1-3/4 in. (44.45 mm) depth, and 10 in. (254 mm) ADA-compliant bottom rail*.
- ▶ Adjustable bottom rail to accommodate irregular floor conditions.
- ▶ Delivered factory glazed and prepped for hardware for easy installation.
- ▶ Listed and labeled by Intertek.
- ▶ 10 year limited warranty.
- ▶ USA manufactured for fast lead times and competitive pricing.

*Bottom rail can be modified with AHJ approval

DOORS:
with SuperLite I
glazing

Fire Rating	Max. Door Opening (Single Door)	Max. Door Opening (Pair Door)
20 minutes	48 in. x 108 in. (1.22 m x 2.74 m)	96 in. x 108 in. (2.44 m x 2.74 m)

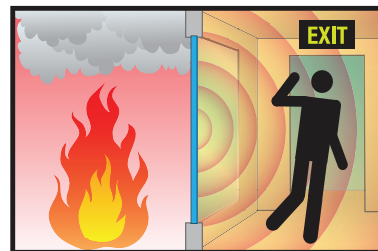
UL AND INTERTEK TESTED AND CERTIFIED



Listed and labeled by Intertek,
a nationally recognized testing
laboratory approved by OSHA.

FIRE PROTECTIVE

**Contains smoke and flames.
Does not block radiant heat.**



**For fire resistive framing that blocks
radiant heat see HMTR (doors only) or GPX.**

SPECIFICATIONS

Profile width: 5 in. (127.00 mm)

Depth: 1-3/4 in. (44.45 mm)

Fire Rating: 20 minutes

Impact Safety Rating:
CPSC 16 CFR 1201 Cat. II with SuperLite I glazing

Finish: Painted or Anodized

Warranty: 10 year limited warranty

3-Part Specifications:

Available at
www.safti.com/specifications

APPROVALS

ASTM E152, ASTM E2074, NFPA 80, NFPA 252,
UL 10B, UL 10C, ULC CAN4-S104, CPSC 16 CFR
1201 Cat. II, ANSI Z97.1



Made in the USA

GPX[®] ARCHITECTURAL S E R I E S

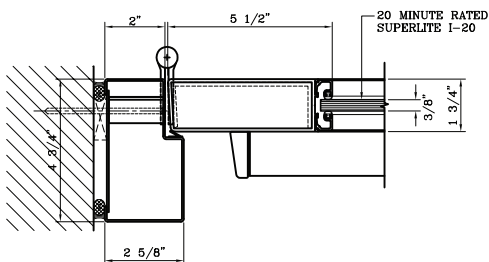
**20 Minute Fire Protective
Aluminum Door**



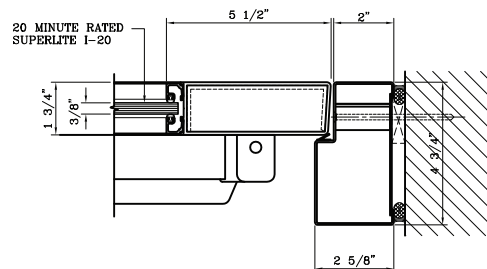
The GPX Architectural Series 20 minute fire protective aluminum door is a full vision, stile and rail door that incorporates SuperLite I clear specialty tempered glazing. SuperLite I with PPG Starphire[®] Ultra-Clear Glass and SuperLite pattern glass are also available glazing options. Fully listed and labeled by Intertek this product meets NFPA 252, UL 10C for positive pressure, and CPSC Cat. II impact safety (with SuperLite I glazing).

TYPICAL DETAILS *More details available at www.safti.com/details*

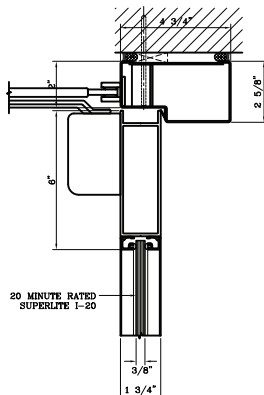
Door Jamb at Hinge Detail



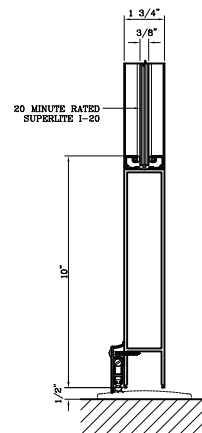
Door Jamb at Lock Detail



Door Top Rail



Door Bottom Rail



The information provided herein is for general reference only. Please visit www.safti.com for the most updated information. © SAFTI FIRST September 2020

www.safti.com

SAFTI[®]FIRST[®]
SAFETY AND FIRE TECHNOLOGY INC.

888.653.3333