

PRODUCT ADVANTAGES



- ▶ The first clear, fire resistant and hurricane rated, aluminum clad wall and door systems up to 2 hours available with Florida Building Code Approvals and UL certifications.
- ▶ Maximum design loads up to +/- 80 PSF.
- ▶ Glazing make-up is SuperLite II-XL insulated with 9/16 in. DuPont Sentry Plus Laminated Glass.
- ▶ Offered in standard and custom finishes including high performance fluoropolymer finishes by PPG, clear anodized, bronze anodized, black anodized, Decoral®, any species of wood veneer, ornamental metal, and more.
- ▶ 5-year manufacturer's warranty.
- ▶ USA-made for fast lead times and competitive pricing.

FLORIDA PRODUCT APPROVAL

- ▶ FL 163882 for walls and FL 16888 for single and pair doors.
- ▶ Complies with High Velocity Hurricane Zone (HVHZ) testing requirements.
- ▶ Dow Corning 995 to be used as the perimeter sealant.
- ▶ Approvals include ASTM E119, NFPA 251, UL 263, ASTM E283, ASTM E331, ASTM 547, TAS 202, FBC 1626.2 (TAS 201 and TAS 203), AAMA 1302.5-76 and 1303.5-76, ASTM E1300

| Walls: | Fire Rating | Max. CV Area | Max. CV Width | Max. CV Height |
|--------|---------------|--------------------------------------|------------------|------------------|
| | 60 minute | 4,952 sq. in. (3.19 m ²) | 124 in. (3.15 m) | 124 in. (3.15 m) |
| | 90-120 minute | 4,876 sq. in. (3.15 m ²) | 124 in. (3.15 m) | 124 in. (3.15 m) |

| DOORS: | Fire Rating | Max. Door Size (Single Door) | Max. Door Size (Pair Door) |
|--------|---------------|--|--|
| | 60-90 minutes | 52-1/2 in. x 105-1/4 in. (1.3 m x 2.67 m) | 104-1/2 in. x 105-1/4 in. (2.65 m x 2.67 m) |

UL CERTIFICATIONS

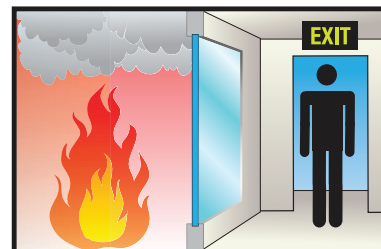
- ▶ UL listing R25144 for Wind-resistant Building Components
- ▶ Approvals include ASTM E119, NFPA 251, UL 263, TAS 201, TAS 202, TAS 203, ASTM E1996, ASTM E330, ASTM E1886, ANSI/SDI A250.13

| Walls: | Fire Rating | Max. CV Area | Max. CV Width | Max. CV Height |
|--------|---------------|--------------------------------------|------------------|------------------|
| | 60-120 minute | 4,952 sq. in. (3.19 m ²) | 124 in. (3.15 m) | 124 in. (3.15 m) |
| | 90-120 minute | 4,876 sq. in. (3.15 m ²) | 124 in. (3.15 m) | 124 in. (3.15 m) |

| DOORS: | Fire Rating | Max. Door Size (Single Door) | Max. Door Size (Pair Door) |
|--------|---------------|--------------------------------------|--|
| | 60-90 minutes | 42 in. x 84 in. (1.07 m x 2.13 m) | 108 in. x 108 in. (2.74 m x 2.74 m) |

FIRE RESISTIVE

Contains smoke and flames, and blocks the passage of radiant heat.



SPECIFICATIONS

Glass Make-Up: SuperLite II-XL insulated with 9/16 in. DuPont Sentry Plus Laminated Glass

Glass Approx. Thickness and Weight:

| Fire Rating | Max. Door Size (Single Door) | Max. Door Size (Pair Door) |
|----------------|---------------------------------|-------------------------------|
| 60 minutes | 2-3/16 in. | 16 lbs./sq. ft. |
| 90-120 minutes | 2-11/16 in. | 16 lbs./sq. ft. |

Wall Frame Profile: 3 in. at the perimeter and 5 in. at the intermediates

Door Frame Profile: 5 in. vertical stile, 5 in. head and 10 in. bottom rail
(bottom rail can be modified with AHJ approval)

Frame Weight: 12 lbs./lineal ft.

UL AND INTERTEK/WHI TESTED & CERTIFIED

Listed and labeled by Intertek/WarnockHersey Inc. and Underwriters Laboratories, nationally recognized testing laboratories approved by OSHA.



SAFTI^{fire} FRAMING Hurricane

**60-120 Minute
Fire Resistive
Hurricane Rated System**

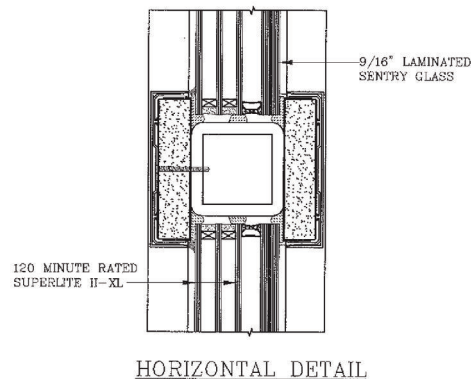
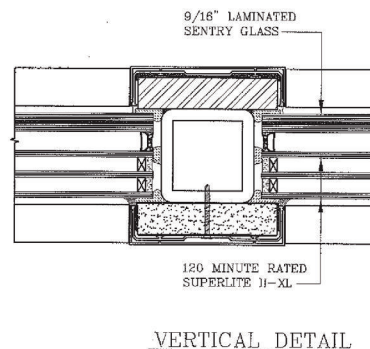
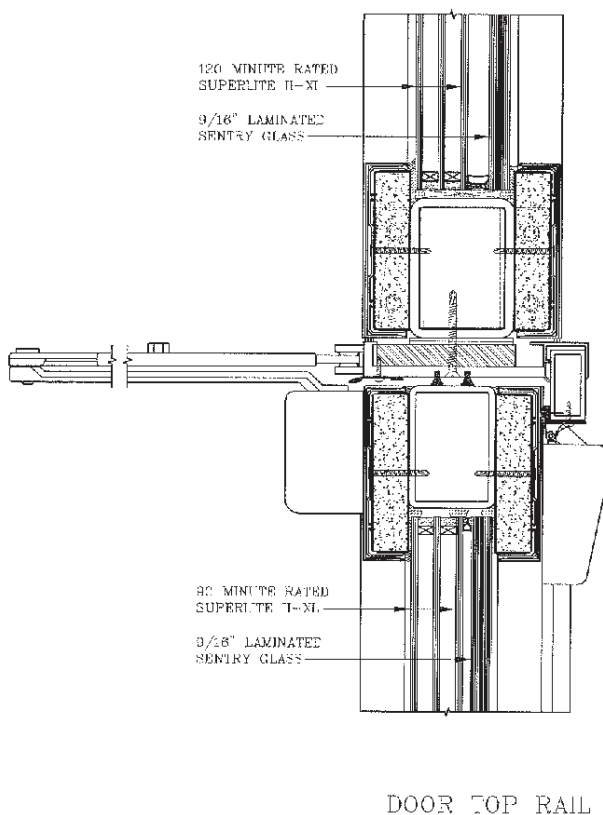


The SAFTI^{fire} Hurricane system provides maximum fire and hurricane resistance in one aesthetically pleasing, easy to install glazed assembly that can be further customized to include energy efficient, decorative or sound attenuating make-ups. The frames are offered in standard and custom finishes including high performance fluoropolymer finishes by PPG, clear anodized, bronze anodized, black anodized, Decoral®, ornamental metal, and more. This innovative product provides a breakthrough for designers who, in the past, either put fire shutters on hurricane impact glazing, or put hurricane shutters on fire rated glass.

Project: Las Olas Beach Club and Condominiums in Ft. Lauderdale, FL
Architect: The Sieger Suarez Architectural Partnership
Contract glazier: RC Aluminum
Products used: Fire and Hurricane Rated SuperLite II-XL 90 and 120 in Hurricane Framing

TYPICAL DETAILS *More details available at www.safti.com/details*

2-Hour SAFTI^{fire} Hurricane Wall with 90 minute SAFTI^{fire} Hurricane Door



The information provided herein is for general reference only and subject to change without notice. Please visit www.safti.com for the most updated information.

© SAFTI FIRST July 2014

www.safti.com

SAFTI^{fire}FIRST
SINCE 1981

888.653.3333