

PRODUCT ADVANTAGES



FIRE RATED



THERMAL SHOCK



POSITIVE PRESSURE

- ▶ Full vision, 20 minute stile and rail aluminum door.
- ▶ Glazed with SuperLite I (20 minute clear, specialty tempered safety glazing). SuperLite I is also available with Starphire® Ultra-Clear Glass by PPG, and various glass patterns.
- ▶ Tested to NFPA 252 and UL 10C with positive pressure.
- ▶ Single and Pair Doors up to 4 ft. x 9 ft. (1.22 m x 2.74 m).
- ▶ 5 in. (127 mm) stile, 5-1/2 in. (139.7 mm) top rail, 1-3/4 in. (44.45 mm) depth, and 10 in. (254 mm) ADA-compliant bottom rail*.
- ▶ Adjustable bottom rail to accommodate irregular floor conditions.
- ▶ Delivered factory glazed and prepped for hardware for easy installation.
- ▶ Listed and labeled by Intertek/Warnock-Hersey.
- ▶ 10 year limited warranty.
- ▶ USA manufactured for fast lead times and competitive pricing.

*Bottom rail can be modified with AHJ approval

DOORS:
with SuperLite I
glazing

Fire Rating	Max. Door Opening (Single Door)	Max. Door Opening (Pair Door)
20 minutes	48 in. x 108 in. (1.22 m x 2.74 m)	96 in. x 108 in. (2.44 m x 2.74 m)

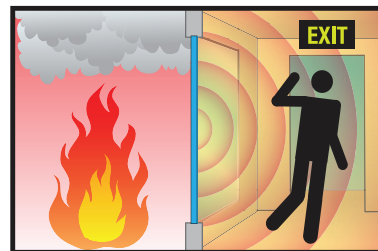
UL AND INTERTEK/WHI TESTED AND CERTIFIED



AL20 Framing is listed and labeled by Intertek/Warnock-Hersey Inc. and Underwriters Laboratories, nationally recognized testing laboratories approved by OSHA.

FIRE PROTECTIVE

Contains smoke and flames.
Does not block radiant heat.



For fire resistive framing that blocks
radiant heat see HMTR (doors only) or GPX.

SPECIFICATIONS

Profile width: 5 in. (127.00 mm)

Depth: 1-3/4 in. (44.45 mm)

Fire Rating: 20 minutes

Impact Safety Rating:
CPSC 16 CFR 1201 Cat. II with SuperLite I glazing

Finish: Painted or Anodized

Warranty: 10 year limited warranty

3-Part Specifications:

Available at
www.safti.com/specifications

APPROVALS

ASTM E152, ASTM E2074, NFPA 80, NFPA 252,
UL 10B, UL 10C, ULC CAN4-S104, CPSC 16 CFR
1201 Cat. II.



Made in the USA

GPX ARCHITECTURAL S E R I E S

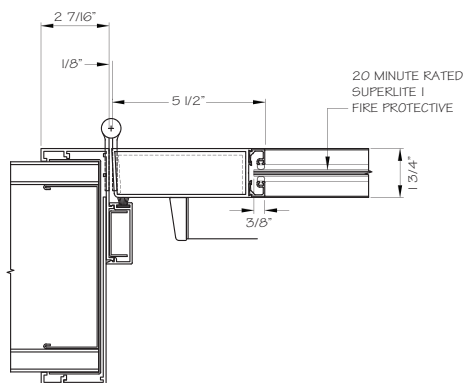
**20 Minute Fire Protective
Aluminum Door**



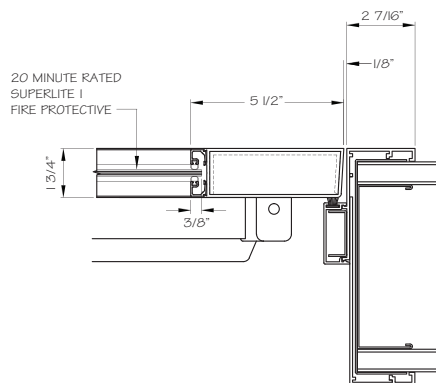
The GPX Architectural Series 20 minute fire protective aluminum door is a full vision, stile and rail door that incorporates SuperLite I clear specialty tempered glazing. SuperLite I with PPG Starphire® Ultra-Clear Glass and SuperLite pattern glass are also available glazing options. Fully listed and labeled by Intertek-Warnock Hersey, this product meets NFPA 252, UL 10C for positive pressure, and CPSC Cat. II impact safety (with SuperLite I glazing).

TYPICAL DETAILS *More details available at www.safti.com/details*

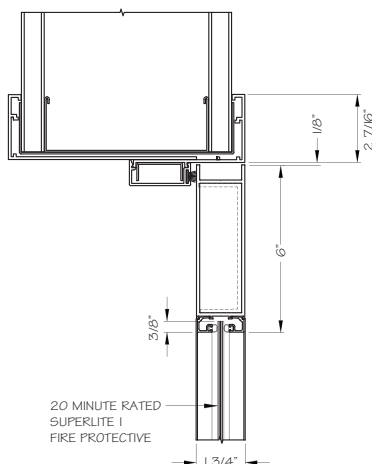
Door Jamb



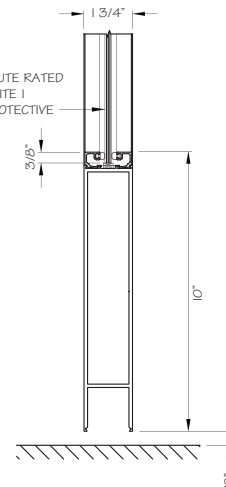
Door Jamb



Door Top Rail



Door Bottom Rail



The information provided herein is for general reference only. Please visit www.safti.com for the most updated information. © SAFTI FIRST August 2015

www.safti.com

SAFTI FIRST
S I N C E 1 9 8 1

888.653.3333