

PRODUCT ADVANTAGES



FIRE RATED



RADIANT HEAT



LOAD BEARING



NON-SLIP SURFACE



NON-LOAD BEARING
OPTION AVAILABLE

- ▶ Fire resistive glass floor assembly that allows daylight to penetrate further into the building while meeting fire rated requirements.
- ▶ Single glass unit comprised of custom SuperLite II-XLF combined with a tempered laminated walking surface and a structural steel framing grid. Both the glass unit and structural steel framing grid are manufactured and provided by SAFTI FIRST.
- ▶ Largest tested and listed individual glass panel sizes for 60 and 120 minute load bearing floor applications.
- ▶ Largest tested and listed sizes for 60 minute non-load bearing overhead glazing applications.
- ▶ Meets ASTM E-119/ UL 263/ ULC-S101 and blocks smoke, flames and radiant heat.
- ▶ Available with a durable, non-slip walking surface with loads up to 100 psf.
- ▶ Modular system with a top-loaded design for easy installation.
- ▶ Can be used in interior and exterior applications.
- ▶ Available in multiple frame finishes and glass make-ups.

Individual Panel Sizes (Load bearing):

Fire Rating	Application	Max. Area	Max. Width	Max. Length
60 minutes	Fully Supported	7,017.3 sq. in.	82-3/8 in.	85-3/16 in.
60 minutes	Butt-glazed	4,763.9 sq. in.	67-7/8 in.	70-3/16 in.
120 minutes	Fully Supported	7,179.9 sq. in.	96-3/8 in.	74-1/2 in.
120 minutes	Butt-glazed	7,179.9 sq. in.	96-3/8 in.	74-1/2 in.

Individual Panel Sizes (Non-load bearing):

Fire Rating	Application	Max. Area	Max. Width	Max. Length
60 minutes	Fully Supported	5,889.6 sq. in.	78 in.	78 in.
60 minutes	Butt-glazed	5,889.6 sq. in.	78 in.	78 in.

UL AND INTERTEK TESTED AND CERTIFIED

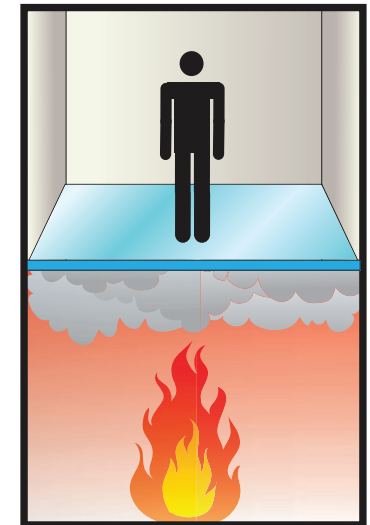


GPX FireFloor System is listed and labeled by Intertek and Underwriters Laboratories, nationally recognized testing laboratories approved by OSHA.

FIRE RESISTIVE

Meets standard code for floor loading.

Contains smoke, flames and blocks the passage of radiant heat.



SPECIFICATIONS

Load bearing:

Thickness: 4-3/16 in. for 60 minute.
5-3/16" thick for 120 minute.

Weight: Approx. 40 lbs./sq. ft. for 60 minute.
51.6 lbs. per square foot for 120 minute.

Fire Rating: 60-120 minutes. Meets ASTM E-119, UL 263 and ULC-S101.

Load: Up to 100 psf.

Non-load bearing:

Thickness: 3-3/16 in., 4-1/16 in. or 4-13/16 in.

Fire Rating: 60 minutes. Meets ASTM E-119, UL 263 and ULC-S101.

APPROVALS

ASTM E-119, UL 263 and ULC-S101.

3-Part Specifications:

Available at

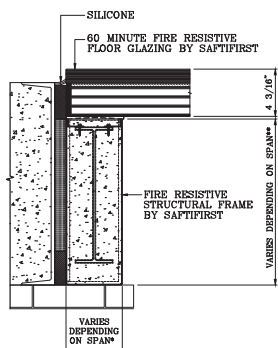
www.safti.com/specifications



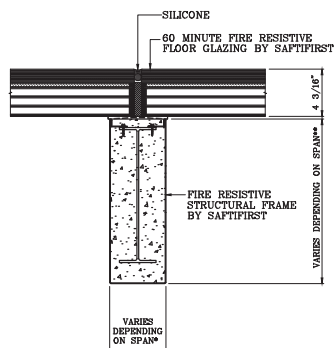
Made in the USA

TYPICAL DETAILS *More details available at www.safti.com/details*

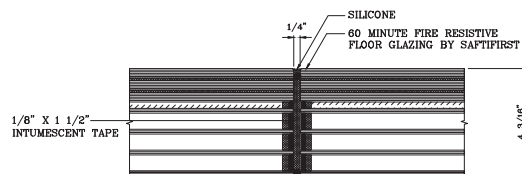
60 minute GPX FireFloor System (Load bearing):



1 JAMB AT CONCRETE OPENING

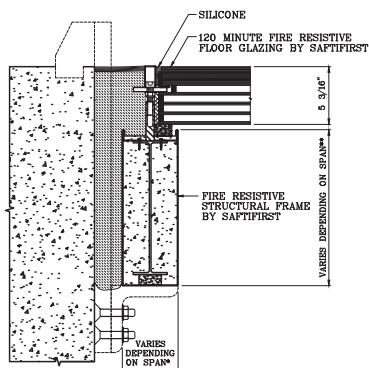


2 BEAM DETAIL

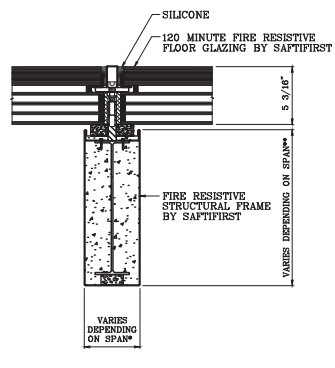


3 BUTT GLAZED DETAIL

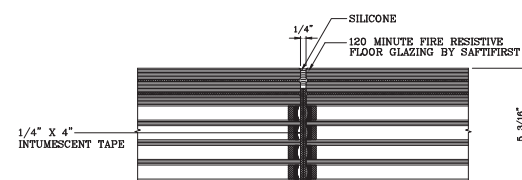
120 minute GPX FireFloor System (Load bearing):



1 JAMB AT CONCRETE OPENING

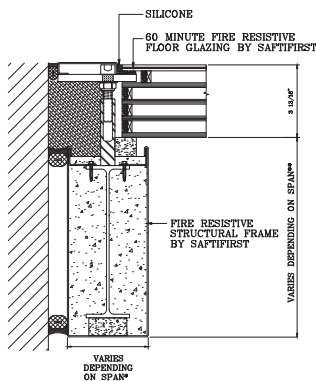


2 BEAM DETAIL

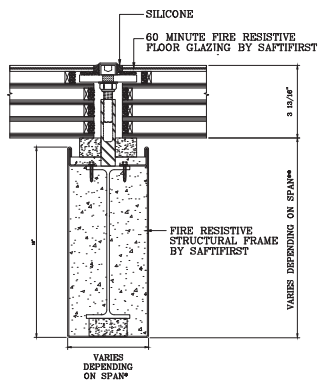


3 BUTT GLAZED DETAIL

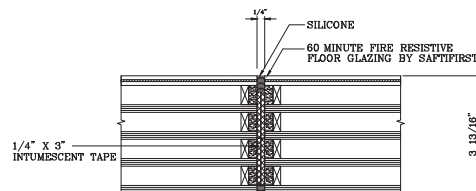
60 minute GPX FireFloor System (Non-load bearing):



1 JAMB AT CONCRETE OPENING



2 BEAM DETAIL



3 BUTT GLAZED DETAIL

*Span table and loading criteria available by downloading the 3-part specifications at www.safti.com/specifications.

The information provided herein is for general reference only and is subject to change without notice. Please visit www.safti.com for the most updated information. © SAFTI FIRST January 2020