

## PRODUCT ADVANTAGES



- Provides wall-to-wall and floor-to-ceiling transparency for up to 2 hours when combined with SuperLite<sup>®</sup> II-XL, SuperLite<sup>®</sup> II-XLB or SuperLite<sup>®</sup> II-XLM glazing.
- Durable and structurally sound fire resistive aluminum clad framing system.
- Provides the clean appearance of conventional aluminum framing with uniform sightlines.
- Available in standard and custom finishes including high performance fluoropolymer finishes by PPG, clear anodized, bronze anodized, black anodized, Decoral<sup>®</sup>, any species of wood veneer, ornamental metal, and more.
- Can be used in both interior and exterior walls, openings and fire resistive full-lite door applications.
- Can be customized to protect against hurricane, bullet and blast.
- Standard 5 year limited warranty.
- USA manufactured for fast lead times and competitive pricing.

### FRAMING: with SuperLite<sup>®</sup> II-XL glazing

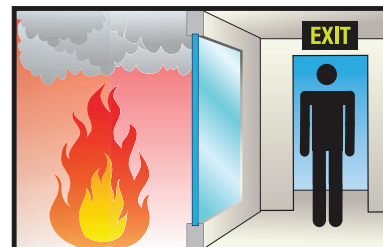
Fire Rating	Max. CV Area	Max. CV Width	Max. CV Height
45-60 minutes	4,952 in. <sup>2</sup> (3.19 m <sup>2</sup> )	124 in. (3.15 m)	124 in. (3.15 m)
90-120 minutes	4,876 in. <sup>2</sup> (3.15 m <sup>2</sup> )	124 in. (3.15 m)	124 in. (3.15 m)

### DOORS: with SuperLite<sup>®</sup> II-XL glazing

Fire Rating	Max. Door Opening (Single Door)	Max. Door Opening (Pair Door)
60-90 minutes	48 in. x 108 in. (1.22 m x 2.74 m)	96 in. x 108 in. (2.44 m x 2.74 m)

## FIRE RESISTIVE

Contains smoke and flames, and blocks the passage of radiant heat



## SPECIFICATIONS

**Profile Width:** 2-1/2 in. (64 mm) standard

**Weight:** 12 lb./lineal foot standard

**Fire Rating:** 45-120 minutes with hose steam  
Meets ASTM E119, NFPA 251 and UL 263

**Ballistic Resistance:** Can be customized to meet up to Level 8, per UL 752-2005

### 3-Part Specifications:

Available at

[www.safti.com/specifications](http://www.safti.com/specifications)



## UL AND INTERTEK TESTED AND CERTIFIED



GPX<sup>®</sup> Architectural Series is listed and labeled by Intertek and Underwriters Laboratories, nationally recognized testing laboratories approved by OSHA.

## APPROVALS

UL 9, UL 10B, UL 10C, UL 263, UL 752-2005, NFPA 80, NFPA 251, NFPA 252, NFPA 257, ASTM E119, ASTM E152, ASTM E163, ASTM E2074, ASTM E2010-01, CPSC 16 CFR 1201 Cat. II, ANSI Z97.1, ULC CAN4-S101, ULC CAN4-S104, ULC CAN4-S106, NFRC 100, NFRC 200, NFRC 500.

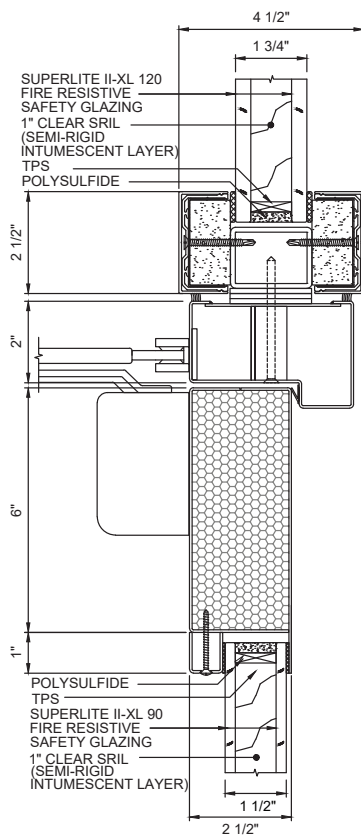


This two hour wall is an example of how GPX<sup>®</sup> Architectural Series with SuperLite<sup>®</sup> II-XLB 120 glazing enhances spaces with elegant transparency and natural daylight. Occupants are able to enjoy the view of the Empire State Building and the fabled NYC skyline while being protected in the event of a fire.

**Project:** The Warehouse on 520 W 20th Street in New York, NY  
**Architect:** Morris Adjmi Architects  
**Contract Glazier:** Vision Walls  
**Products Used:** SuperLite<sup>®</sup> II-XLB 120 with Starphire Ultra-Clear<sup>®</sup> + argon fill + Starphire Ultra-Clear<sup>®</sup> Solarban 60 Lami in GPX<sup>®</sup> Architectural Series Perimeter Framing

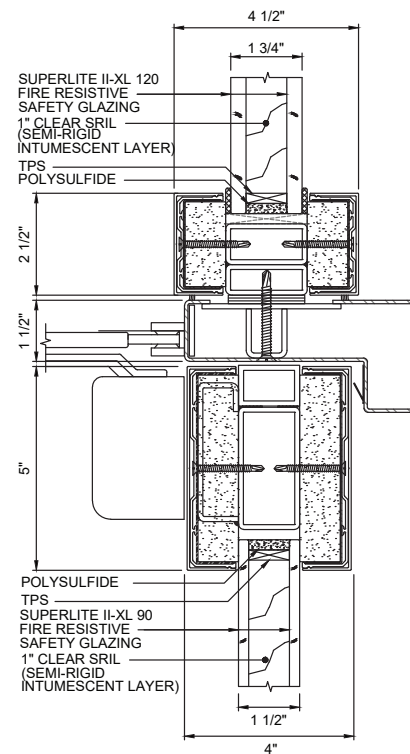
### TYPICAL DETAILS *More details available at [www.safti.com/details](http://www.safti.com/details)*

**SuperLite<sup>®</sup> II-XL 120 in GPX<sup>®</sup> Architectural Framing and  
 SuperLite<sup>®</sup> II-XL 90 in GPX<sup>®</sup> Builders Series Temperature Rise Door**



DOOR TOP RAIL DETAIL

**SuperLite<sup>®</sup> II-XL 120 in GPX<sup>®</sup> Architectural Framing and  
 SuperLite<sup>®</sup> II-XL 90 in GPX<sup>®</sup> Architectural Series Door**



DOOR TOP RAIL DETAIL

Details not to scale.

The information provided herein is for reference only and is subject to change without notice. Please visit [www.safti.com](http://www.safti.com) for the most up to date information.

© SAFTI FIRST<sup>®</sup> October 2021