

---

# NFRC CMAST

Last Updated October 2019

## U-Factor, SHGC & VT Simulated Values with SuperLite II-XL, SuperClear 45-HS, SuperClear 45-HS-LI and GPX Framing by SAFTI **FIRST**

### General Disclaimer:

*The values shown here are simulations performed in CMAST using NFRC's standard test sizes. They serve as general performance indicators or predictors only. U-Factors and thermal performance are general weighted averages comprised of center of glass, glass edge and framing values, while SHGC is predicated on the coatings. Overall size, configuration and quantities may impact performance levels.*

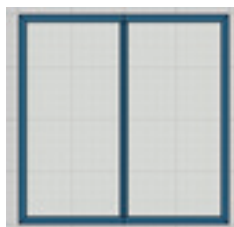
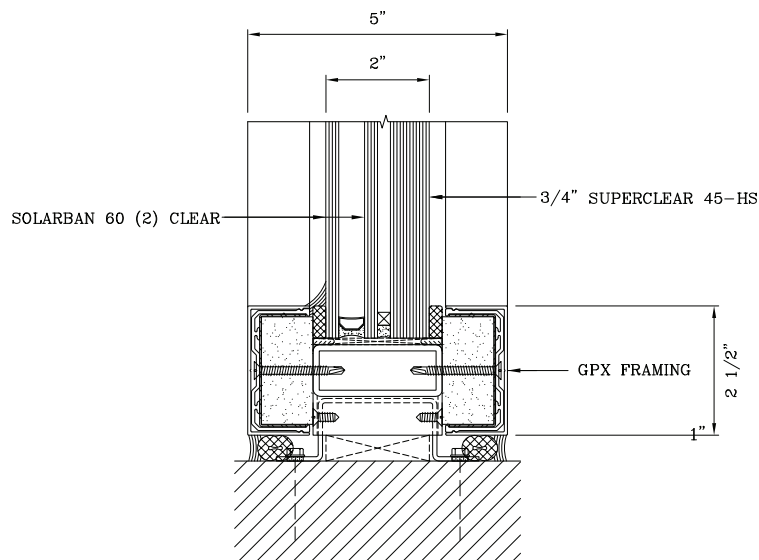
*Designers may request project-specific NFRC Bid Reports using the sizes and configurations for that project. These bid reports are for design purposes only and are not official NFRC Label Certificates. If NFRC Label Certificates are needed, it may be requested and provided for a fee.*

*Starphire versions of SuperLite II-XL products are also available. Please note that **SAFTI FIRST** can only simulate U-Factors, SHGC and VT on products that are available in CMAST.*

## NFRC CMAST U-Factor, SHGC and VT Simulated Values

*All sizes are based on NFRC standard test sizes in CMAST*

### 1" Solarban 60 (2) Clear + 1/4" Argon + SuperClear 45-HS in GPX Framing

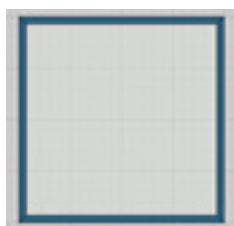


Curtain Wall with Vertical Mullions -  
78.74 in. x 78.74 in.

U-Factor: 0.259

SHGC: 0.295

VT: 0.484



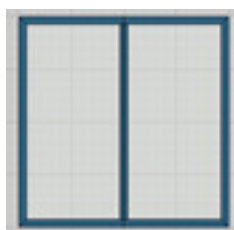
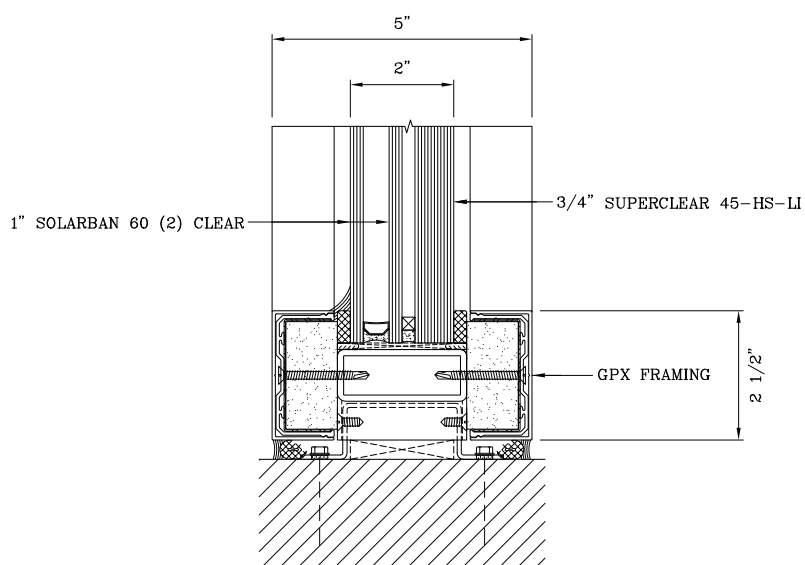
Punched Opening -  
47.24 in. x 59.06 in.

U-Factor: 0.263

SHGC: 0.286

VT: 0.467

### 1" Solarban 60 (2) Clear + 1/4" Argon + SuperClear 45-HS-LI in GPX Framing

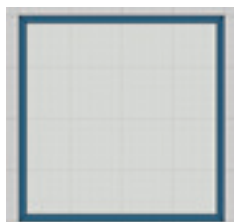


Curtain Wall with Vertical Mullions -  
78.74 in. x 78.74 in.

U-Factor: 0.259

SHGC: 0.300

VT: 0.522



Punched Opening -  
47.24 in. x 59.06 in.

U-Factor: 0.263

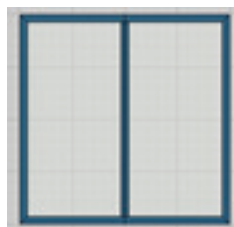
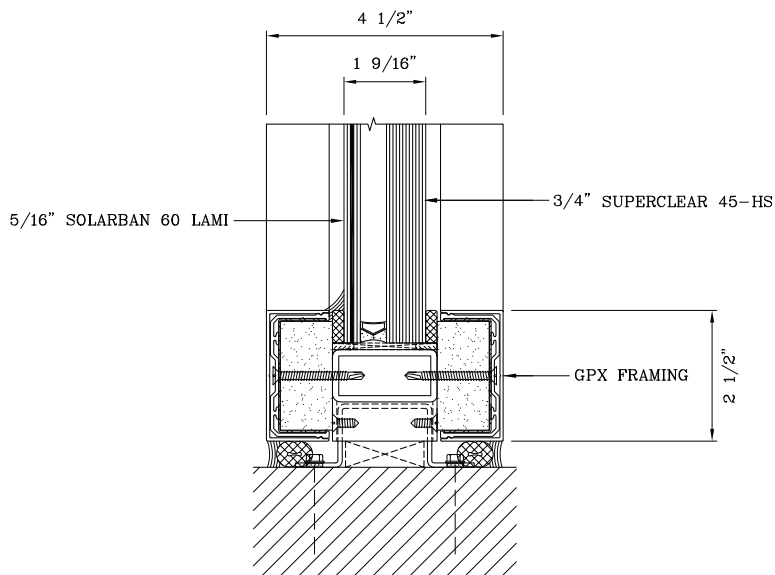
SHGC: 0.291

VT: 0.504

## NFRC CMAST U-Factor, SHGC and VT Simulated Values

*All sizes are based on NFRC standard test sizes in CMAST*

### 5/16" Solarban 60 Lami + 1/2" Argon + SuperClear 45-HS in GPX Framing

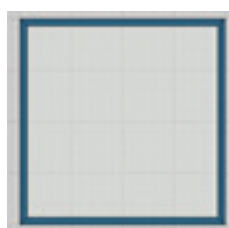


Curtain Wall with Vertical Mullions -  
78.74 in. x 78.74 in.

U-Factor: 0.420

SHGC: 0.301

VT: 0.517



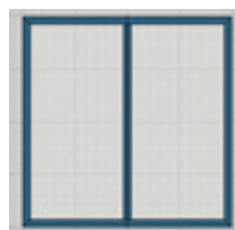
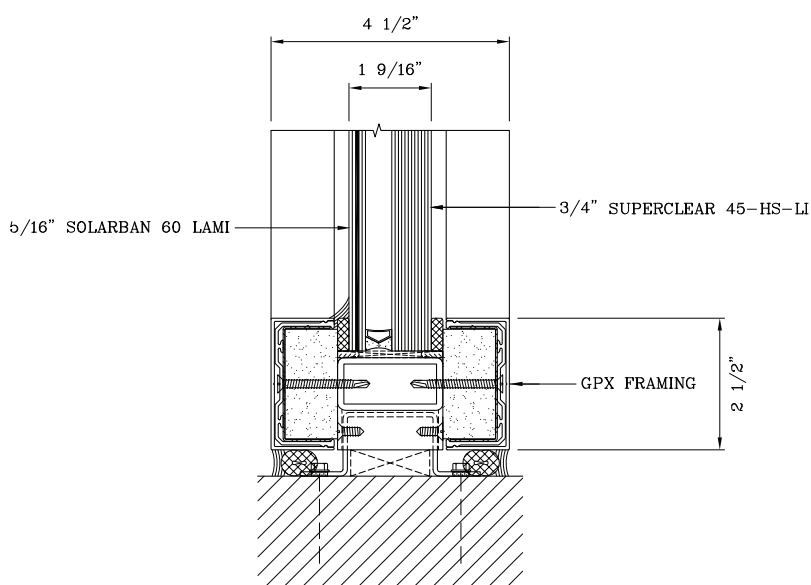
Punched Opening -  
47.24 in. x 59.06 in.

U-Factor: 0.420

SHGC: 0.293

VT: 0.500

### 5/16" Solarban 60 Lami + 1/2" Argon + SuperClear 45-HS-LI in GPX Framing

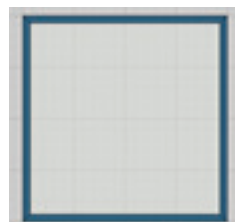


Curtain Wall with Vertical Mullions -  
78.74 in. x 78.74 in.

U-Factor: 0.420

SHGC: 0.301

VT: 0.594



Punched Opening -  
47.24 in. x 59.06 in.

U-Factor: 0.420

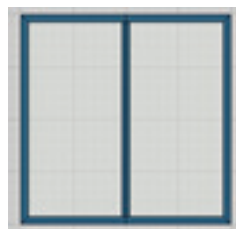
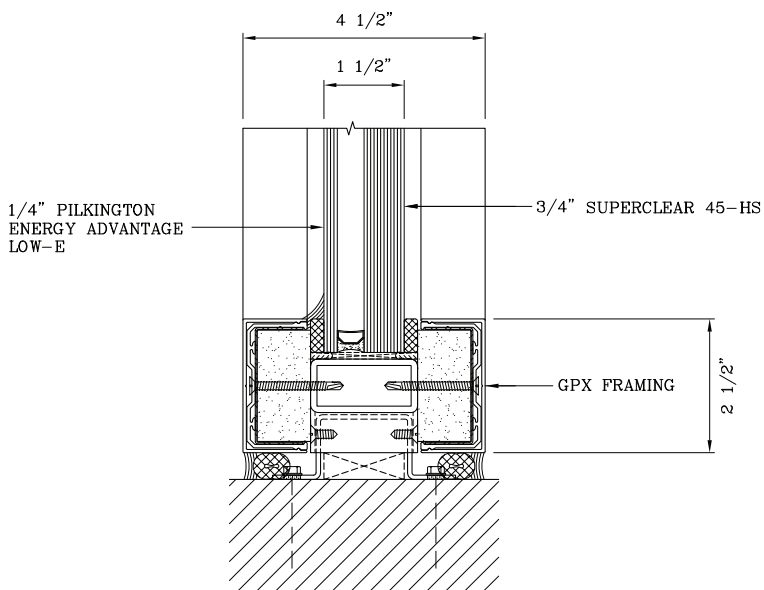
SHGC: 0.306

VT: 0.539

## NFRC CMAST U-Factor, SHGC and VT Simulated Values

*All sizes are based on NFRC standard test sizes in CMAST*

### 1/4" Pilkington Energy Advantage Low-E + 1/2" Argon + SuperClear 45-HS in GPX Framing

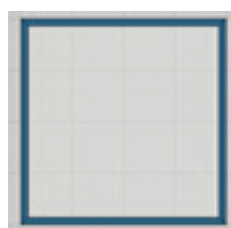


Curtain Wall with Vertical Mullions -  
78.74 in. x 78.74 in.

U-Factor: 0.423

SHGC: 0.500

VT: 0.570



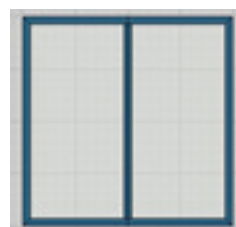
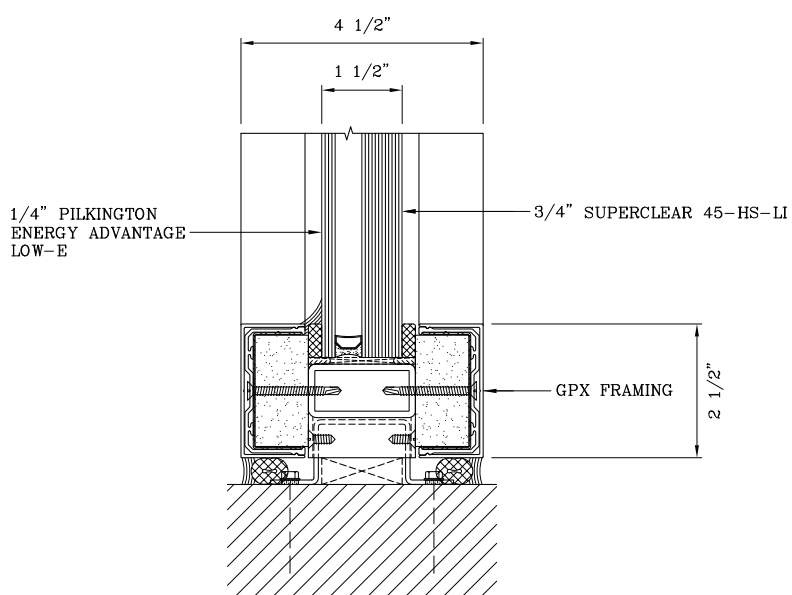
Punched Opening -  
47.24 in. x 59.06 in.

U-Factor: 0.423

SHGC: 0.485

VT: 0.551

### 1/4" Pilkington Energy Advantage Low-E + 1/2" Argon + SuperClear 45-HS-LI in GPX Framing

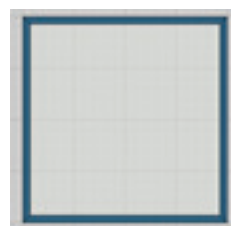


Curtain Wall with Vertical Mullions -  
78.74 in. x 78.74 in.

U-Factor: 0.423

SHGC: 0.541

VT: 0.615



Punched Opening -  
47.24 in. x 59.06 in.

U-Factor: 0.423

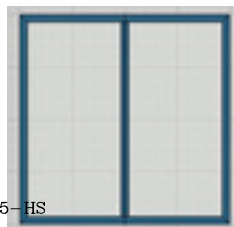
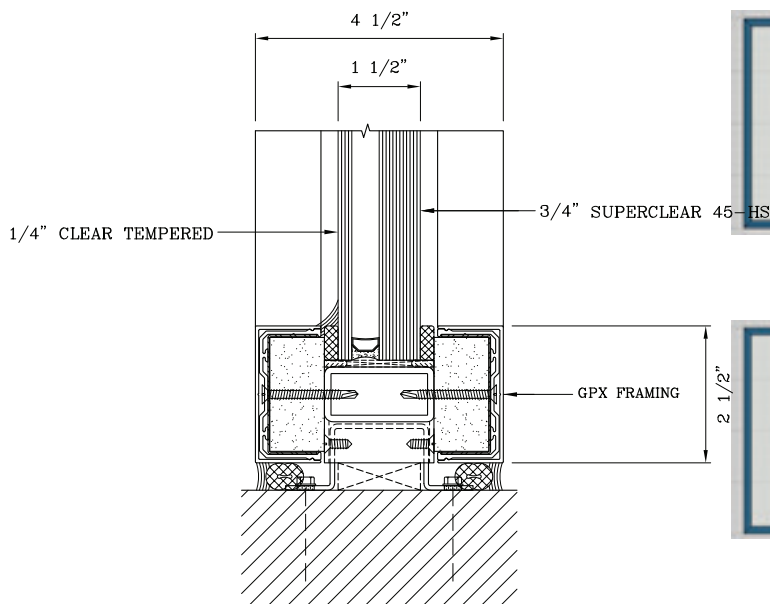
SHGC: 0.524

VT: 0.594

## NFRC CMAST U-Factor, SHGC and VT Simulated Values

*All sizes are based on NFRC standard test sizes in CMAST*

### 1/4" Clear Tempered + 1/2" Argon + SuperClear 45-HS in GPX Framing

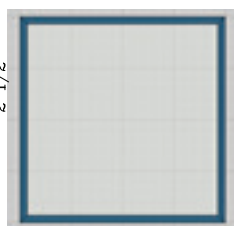


Curtain Wall with Vertical Mullions -  
78.74 in. x 78.74 in.

U-Factor: 0.426

SHGC: 0.557

VT: 0.615



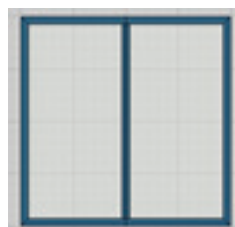
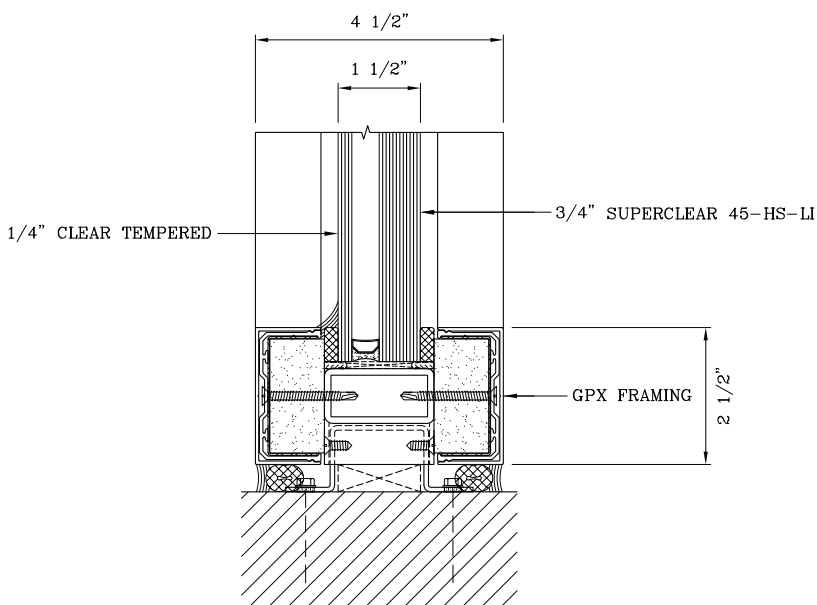
Punched Opening -  
47.24 in. x 59.06 in.

U-Factor: 0.426

SHGC: 0.540

VT: 0.594

### 1/4" Clear Tempered + 1/2" Argon + SuperClear 45-HS-LI in GPX Framing

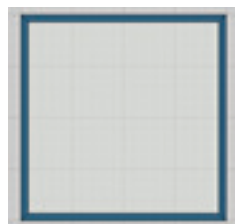


Curtain Wall with Vertical Mullions -  
78.74 in. x 78.74 in.

U-Factor: 0.426

SHGC: 0.607

VT: 0.663



Punched Opening -  
47.24 in. x 59.06 in.

U-Factor: 0.426

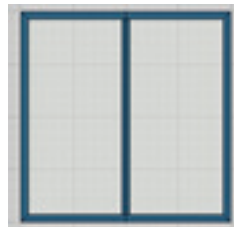
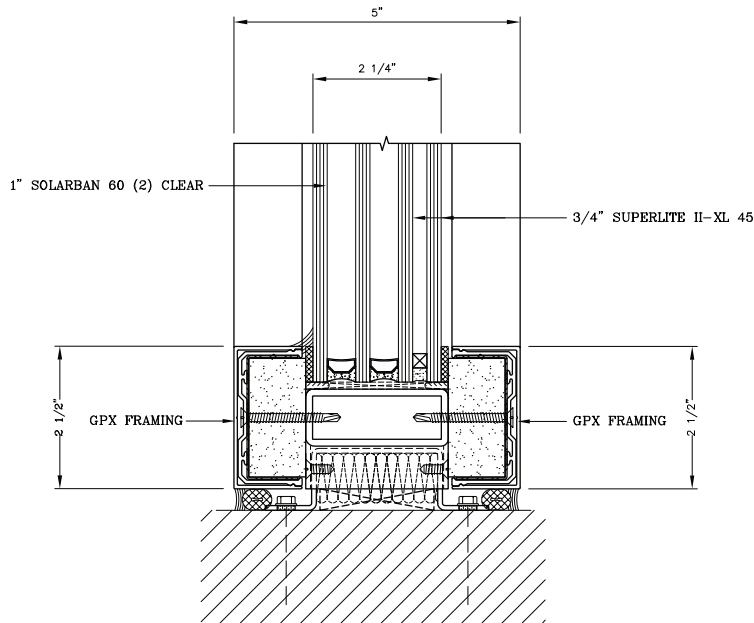
SHGC: 0.588

VT: 0.641

## NFRC CMAST U-Factor, SHGC and VT Simulated Values

*All sizes are based on NFRC standard test sizes in CMAST*

### 1" Solarban 60 (2) Clear + 1/2" Argon + SuperLite II-XL 45 in GPX Framing

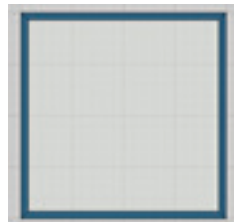


Curtain Wall with Vertical Mullions -  
78.74 in. x 78.74 in.

U-Factor: 0.247

SHGC: 0.292

VT: 0.50



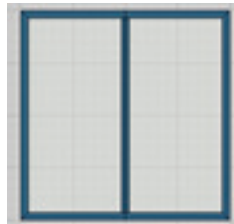
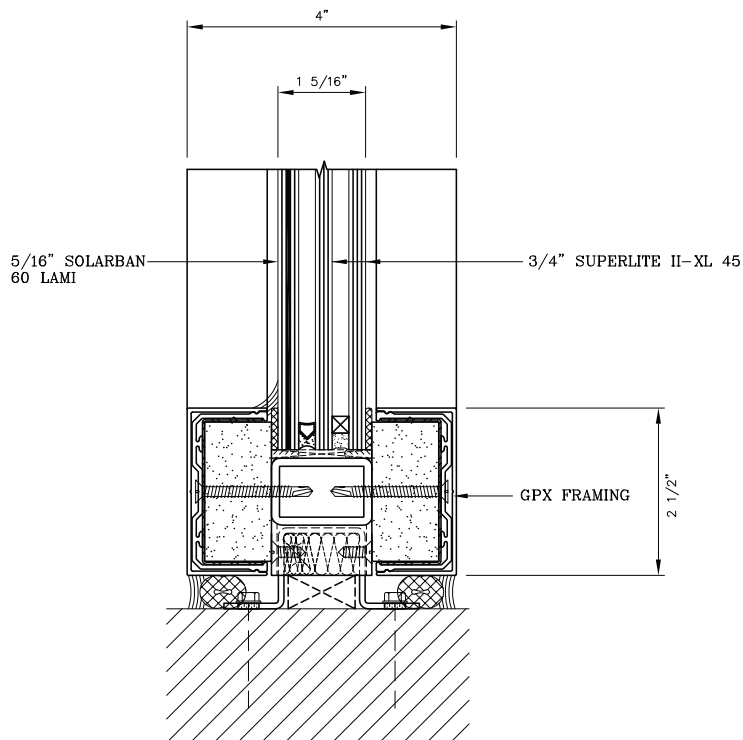
Punched Opening -  
47.24 in. x 59.06 in.

U-Factor: 0.252

SHGC: 0.283

VT: 0.483

### 5/16" Solarban 60 Lami + 1/4" Argon + SuperLite II-XL 45 in GPX Framing

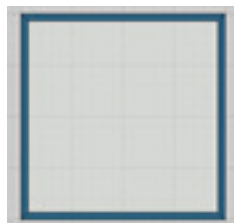


Curtain Wall with Vertical Mullions -  
78.74 in. x 78.74 in.

U-Factor: 0.439

SHGC: 0.304

VT: 0.535



Punched Opening -  
47.24 in. x 59.06 in.

U-Factor: 0.438

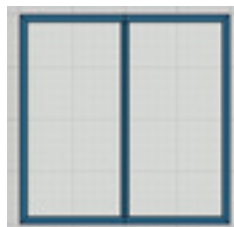
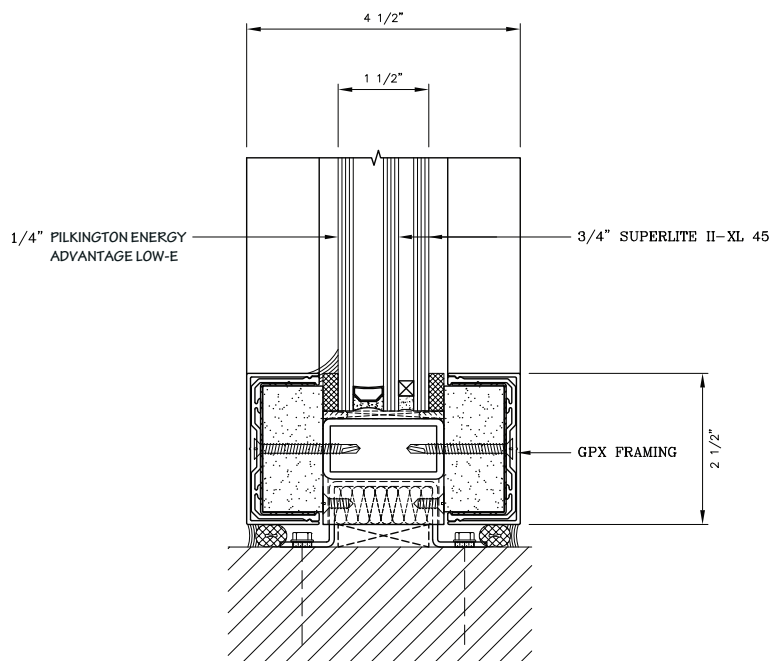
SHGC: 0.295

VT: 0.517

## NFRC CMAST U-Factor, SHGC and VT Simulated Values

*All sizes are based on NFRC standard test sizes in CMAST*

### 1/4" Pilkington Energy Advantage Low-E + 1/2" Argon + SuperLite II-XL 45 in GPX Framing

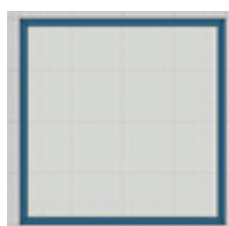


Curtain Wall with Vertical Mullions -  
78.74 in. x 78.74 in.

U-Factor: 0.409

SHGC: 0.495

VT: 0.590



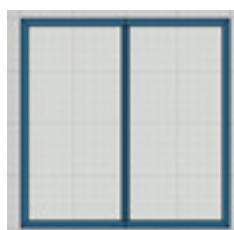
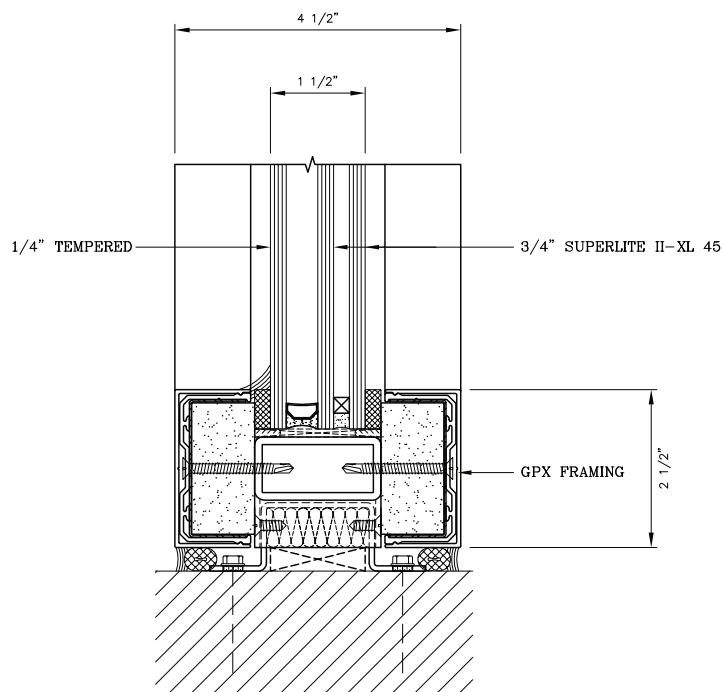
Punched Opening -  
47.24 in. x 59.06 in.

U-Factor: 0.409

SHGC: 0.480

VT: 0.570

### 1/4" Clear Tempered + 1/2" Argon + SuperLite II-XL 45 in GPX Framing

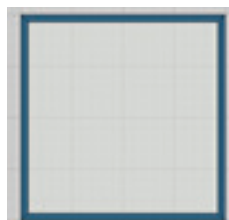


Curtain Wall with Vertical Mullions -  
78.74 in. x 78.74 in.

U-Factor: 0.411

SHGC: 0.543

VT: 0.636



Punched Opening -  
47.24 in. x 59.06 in.

U-Factor: 0.411

SHGC: 0.526

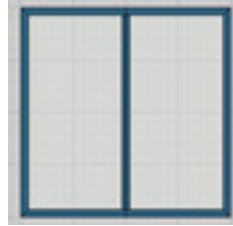
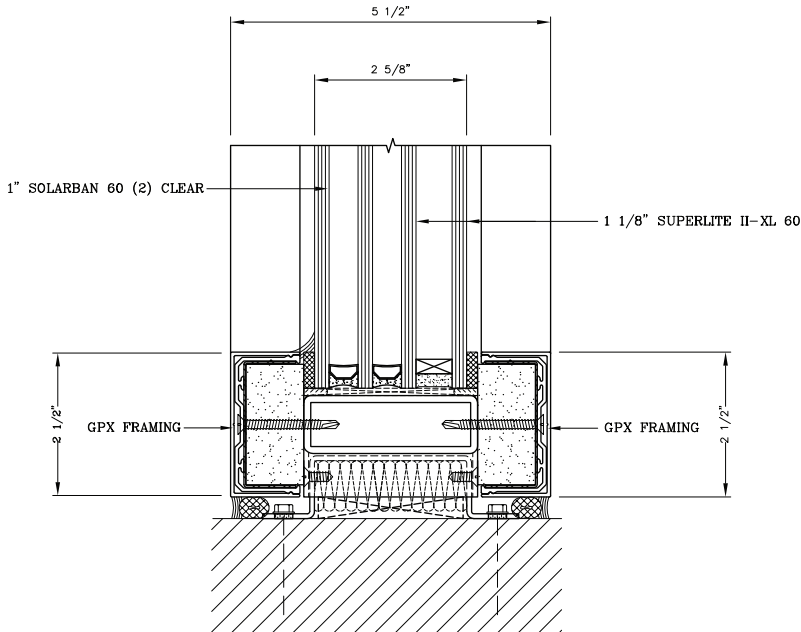
VT: 0.614



## NFRC CMAST U-Factor, SHGC and VT Simulated Values

*All sizes are based on NFRC standard test sizes in CMAST*

### 1" Solarban 60 (2) Clear + ½" Argon + SuperLite II-XL 60 in GPX Framing

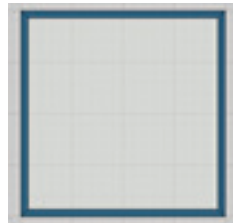


Curtain Wall with Vertical Mullions -  
78.74 in. x 78.74 in.

U-Factor: 0.245

SHGC: 0.293

VT: 0.504



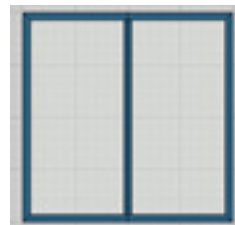
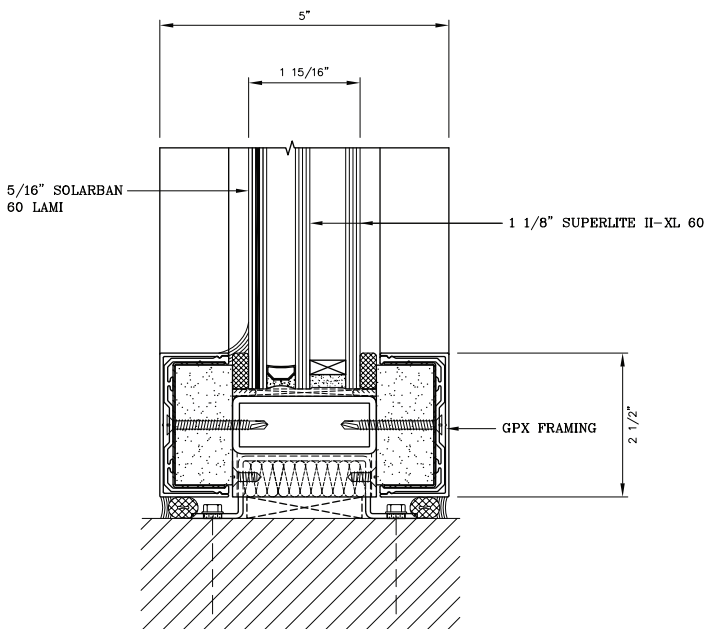
Punched Opening -  
47.24 in. x 59.06 in.

U-Factor: 0.251

SHGC: 0.285

VT: 0.487

### 5/16" Solarban 60 Lami + ½" Argon + SuperLite II-XL 60 in GPX Framing

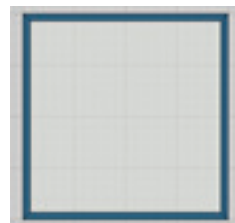


Curtain Wall with Vertical Mullions -  
78.74 in. x 78.74 in.

U-Factor: 0.383

SHGC: 0.297

VT: 0.530



Punched Opening -  
47.24 in. x 59.06 in.

U-Factor: 0.384

SHGC: 0.289

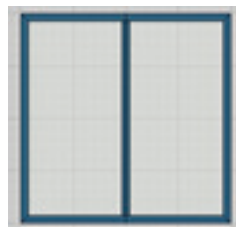
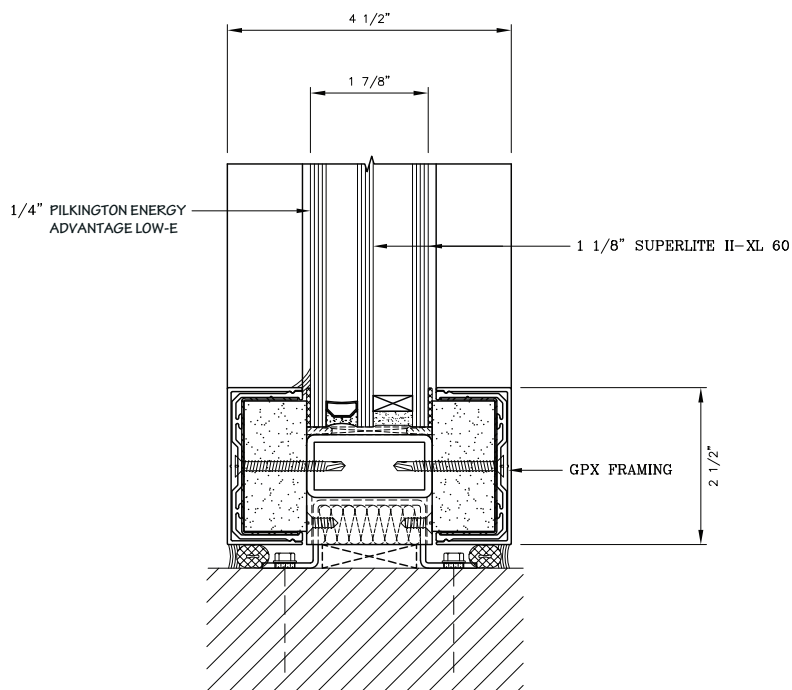
VT: 0.512



## NFRC CMAST U-Factor, SHGC and VT Simulated Values

*All sizes are based on NFRC standard test sizes in CMAST*

### 1/4" Pilkington Energy Advantage Low-E + 1/2" Argon + SuperLite II-XL 60 in GPX Framing

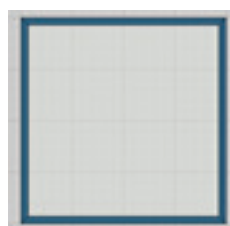


Curtain Wall with Vertical Mullions -  
78.74 in. x 78.74 in.

U-Factor: 0.385

SHGC: 0.484

VT: 0.585



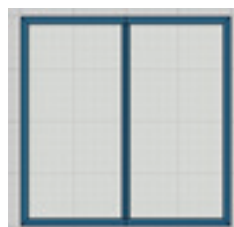
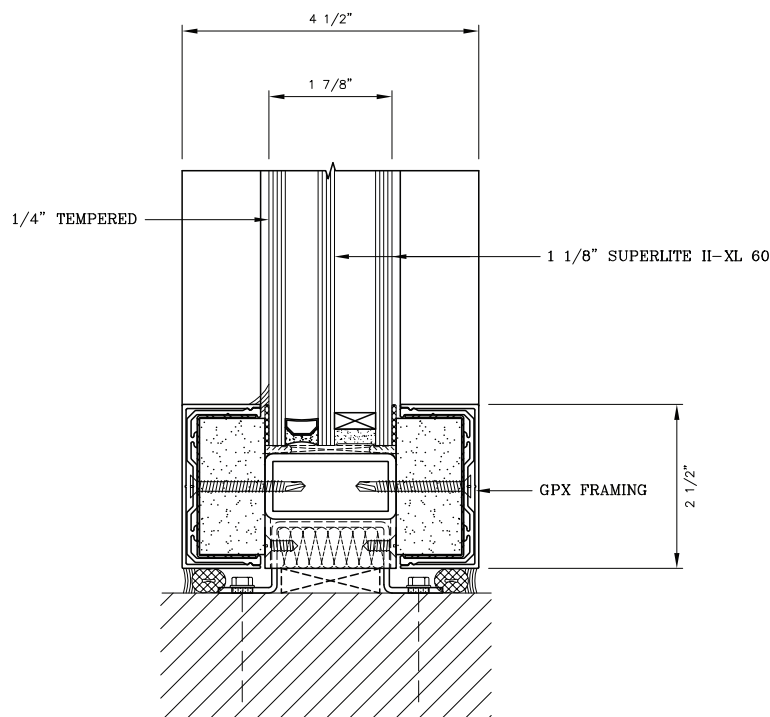
Punched Opening -  
47.24 in. x 59.06 in.

U-Factor: 0.387

SHGC: 0.469

VT: 0.565

### 1/4" Clear Tempered + 1/2" Argon + SuperLite II-XL 60 in GPX Framing

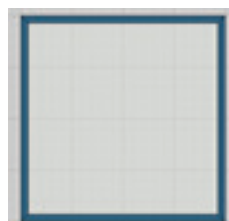


Curtain Wall with Vertical Mullions -  
78.74 in. x 78.74 in.

U-Factor: 0.387

SHGC: 0.531

VT: 0.631



Punched Opening -  
47.24 in. x 59.06 in.

U-Factor: 0.389

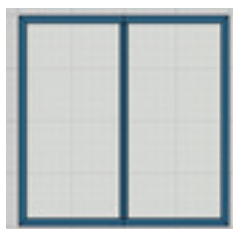
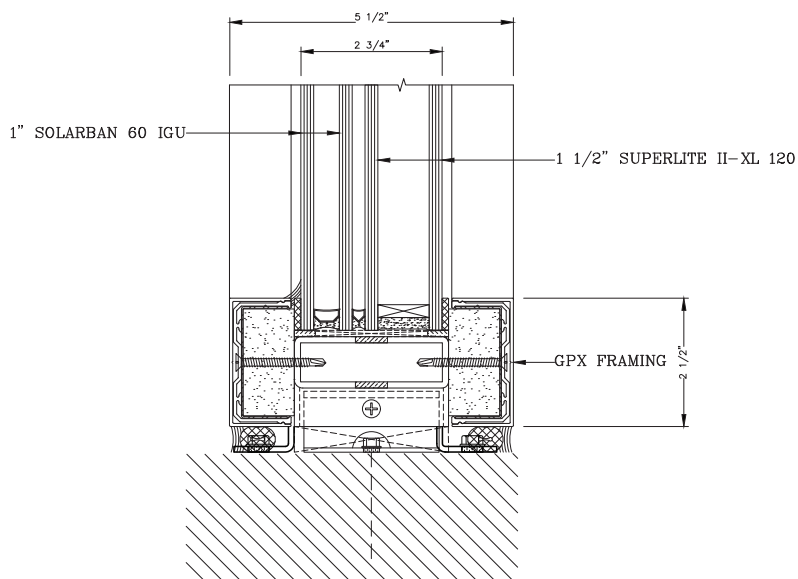
SHGC: 0.515

VT: 0.609

## NFRC CMAST U-Factor, SHGC and VT Simulated Values

*All sizes are based on NFRC standard test sizes in CMAST*

### 1" Solarban 60 (2) Clear + ½" Argon + SuperLite II-XL 120 in GPX Framing

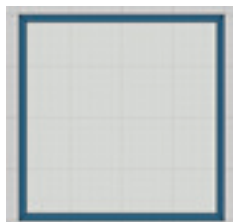


Curtain Wall with Vertical Mullions -  
78.74 in. x 78.74 in.

U-Factor: 0.262

SHGC: 0.293

VT: 0.502



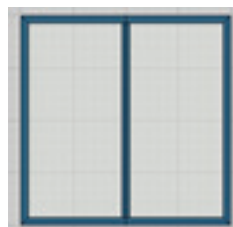
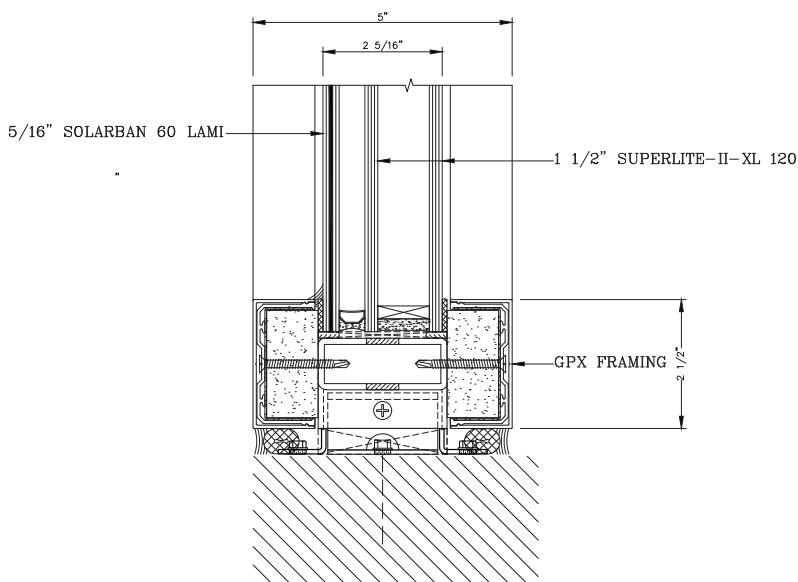
Punched Opening -  
47.24 in. x 59.06 in.

U-Factor: 0.267

SHGC: 0.284

VT: 0.485

### 5/16" Solarban 60 Lami + ½" Argon + SuperLite II-XL 120 in GPX Framing

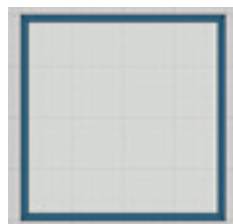


Curtain Wall with Vertical Mullions -  
78.74 in. x 78.74 in.

U-Factor: 0.365

SHGC: 0.293

VT: 0.528



Punched Opening -  
47.24 in. x 59.06 in.

U-Factor: 0.368

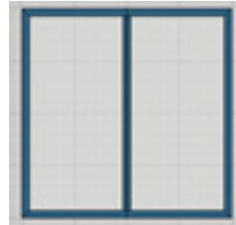
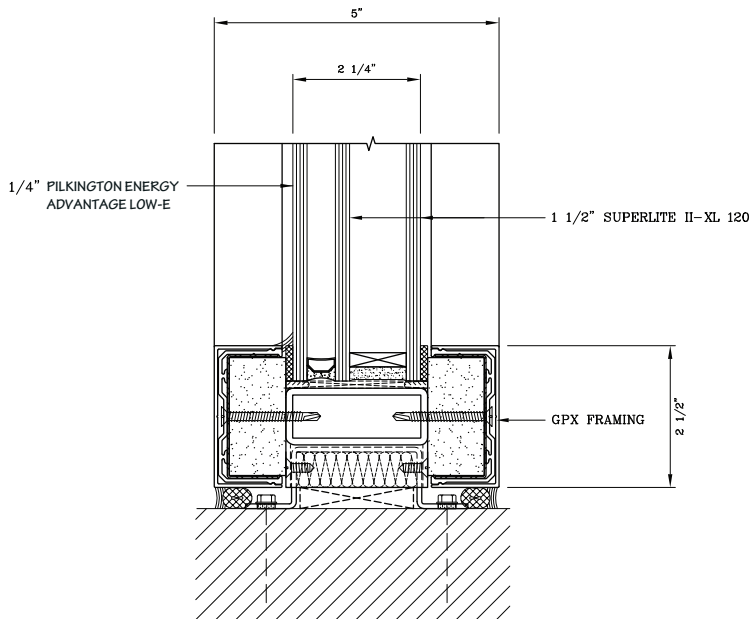
SHGC: 0.284

VT: 0.510

## NFRC CMAST U-Factor, SHGC and VT Simulated Values

*All sizes are based on NFRC standard test sizes in CMAST*

### 1/4" Pilkington Energy Advantage Low-E + 1/2" Argon + SuperLite II-XL 120 in GPX Framing

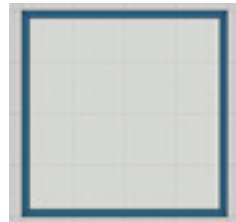


Curtain Wall with Vertical Mullions -  
78.74 in. x 78.74 in.

U-Factor: 0.369

SHGC: 0.475

VT: 0.583



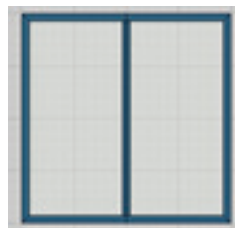
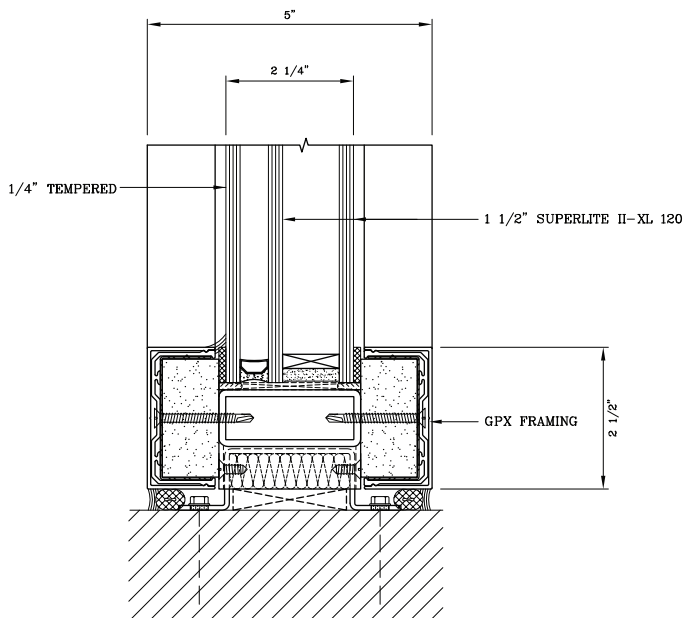
Punched Opening -  
47.24 in. x 59.06 in.

U-Factor: 0.370

SHGC: 0.460

VT: 0.563

### 1/4" Clear Tempered + 1/2" Argon + SuperLite II-XL 120 in GPX Framing

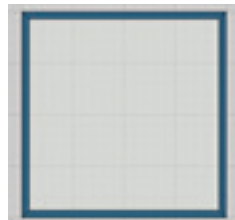


Curtain Wall with Vertical Mullions -  
78.74 in. x 78.74 in.

U-Factor: 0.369

SHGC: 0.521

VT: 0.628



Punched Opening -  
47.24 in. x 59.06 in.

U-Factor: 0.372

SHGC: 0.506

VT: 0.606