

SuperLite II-XL 120

120 Minute
Fire Resistive Glazing

PRODUCT ADVANTAGES



- ▶ **Maximum fire and impact safety with hose stream and full radiant heat protection.**
- ▶ Largest tested and approved sizes up to 4,876 in.² (3.15 m²) in standard 1-3/4 in. (45 mm) profile.
- ▶ Tint-free and optically clear. Perfect for property lines requirements.
- ▶ Available in custom architectural make-ups, such as laminated glass and energy-saving insulated units.
- ▶ Can be customized to protect against forced entry, bullets, blast, hurricane and more.
- ▶ Standard 5 year limited warranty.
- ▶ USA manufactured for fast lead times and competitive pricing.



Now available with *Starphire Ultra-Clear*® glass by Vitro

Largest Sizes for Sidelites, Windows, Transoms and Walls

Fire Rating	Max. CV Area	Max. CV Width	Max. CV Height	Stops
All 120 minute wall applications	4,876 in. ² (3.15 m ²)	124 in. (3.15 m)	124 in. (3.15 m)	5/8 in. (16 mm)

1 in. stops recommended (25 mm). See [Quality Guidelines for SAFTI FIRST® Fire Resistive Glass](#) on the website for more information.

UL AND INTERTEK TESTED AND CERTIFIED



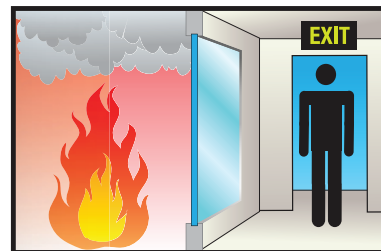
SuperLite® II-XL is listed and labeled by Intertek and Underwriters Laboratories, nationally recognized testing laboratories approved by OSHA.

APPROVALS

UL 9, UL 10B, UL 10C, UL 263, NFPA 80, NFPA 251, NFPA 252, NFPA 257, ASTM E119, ASTM E152, ASTM E163, ASTM E2074, ASTM E2010-01, CPSC 16 CFR 1201 Cat. II, ANSI Z97.1, ULC CAN4-S101, ULC CAN4-S104, ULC CAN4-S106, NFRC 100, NFRC 200, NFRC 500, ASTM C1629/C1629M, ASTM E695, ASTM D4977.

FIRE RESISTIVE

Contains smoke, flames and blocks the passage of radiant heat.



SPECIFICATIONS

Thickness: 1-3/4 in. (45 mm);
2-3/8 in. (61 mm) when insulated with clear low-iron

Weight: 16 lbs./sq. ft. (79 kg/m²)
in 1-3/4 in. (45 mm) standard profile

Fire Rating: 120 minutes with hose steam
Meets ASTM E119 and UL 263

Visible Transmittance: 0.777 with clear standard; 0.878 with clear low-iron

Impact Safety Rating:
CPSC 16 CFR 1201 Cat. I and II & ANSI Z97.1

Hard Body Impact Classification:
ASTM C1629/C1629M Level 3

Soft Body Impact Classification:
ASTM E695 Level 3

Surface Abrasion Resistance:
ASTM D4977 Level 3



Contract Holder
Contract 47GSAW20D0022



Made in the USA

SuperLite® II-XL 120

120 Minute
Fire Resistant Glazing

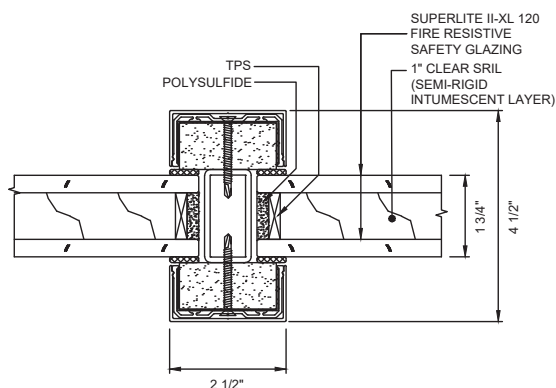


Project: Harvard Business School Klarman Hall in Boston, MA
Architect: William Rawn and Associates
General Contractor: Walsh Brothers Construction
Contract Glazier: The Cheviot Corporation
Products Used: SuperLite® II-XL 120 with Starphire Ultra-Clear® glass in GPX® Curtain Wall Framing; SuperLite® II-XL 90 with Starphire Ultra-Clear® glass in GPX® Architectural Series Aluminum Doors.

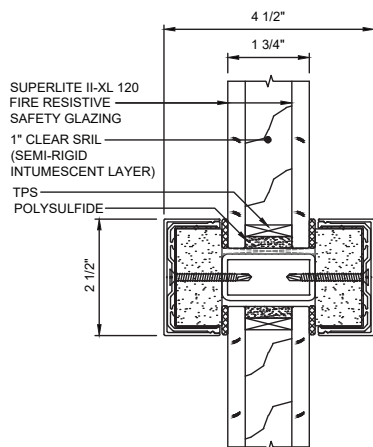
3-Part Specifications available at www.safti.com/specifications

TYPICAL DETAILS *More details available at www.safti.com/details*

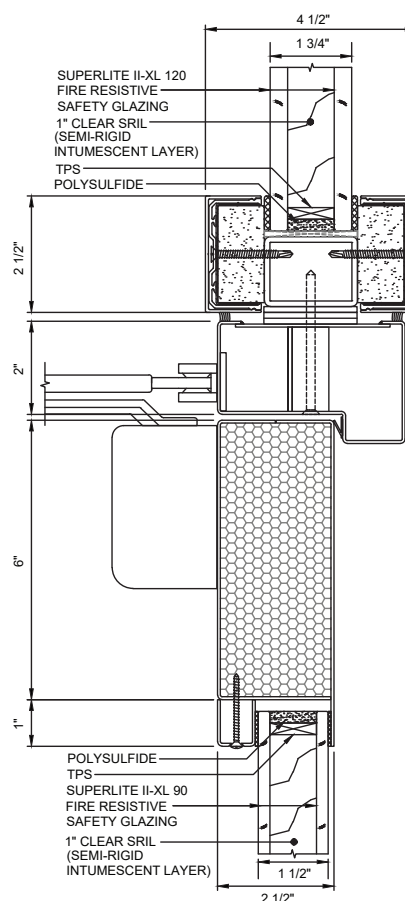
SuperLite® II-XL 120 in GPX® Architectural Series Framing and SuperLite® II-XL 90 in GPX® Builders Series Temperature Rise Door



VERTICAL MULLION DETAIL



HORIZONTAL MULLION DETAIL



DOOR TOP RAIL DETAIL

Details not to scale.

Starphire Ultra-Clear® is a registered trademark owned by Vitro. The information provided herein is for general reference only. Please visit www.safti.com for the most updated information. © SAFTI FIRST® October 2021