

# SuperLite II-XL 120

120 Minute  
Fire Resistive Glazing

## PRODUCT ADVANTAGES



- ▶ **Maximum fire and impact safety with hose stream and full radiant heat protection.**
- ▶ Largest tested and approved sizes up to 4,876 in.<sup>2</sup> (3.15 m<sup>2</sup>) in standard 1-3/4 in. (45 mm) profile.
- ▶ Tint-free and optically clear. Perfect for property lines requirements.
- ▶ Available in custom architectural make-ups, such as laminated glass and energy-saving insulated units.
- ▶ Can be customized to protect against forced entry, bullets, blast, hurricane and more.
- ▶ 5 year manufacturer's warranty.
- ▶ USA manufactured for fast lead times and competitive pricing.



Now available with *Starphire Ultra-Clear*® glass by Vitro

### Largest Sizes for Sidelites, Windows, Transoms and Walls

Fire Rating	Max. CV Area	Max. CV Width	Max. CV Height	Stops
All 120 minute wall applications	4,876 in. <sup>2</sup> (3.15 m <sup>2</sup> )	124 in. (3.15 m)	124 in. (3.15 m)	5/8 in. (16 mm)

1 in. stops recommended (25 mm)

## UL AND INTERTEK TESTED AND CERTIFIED



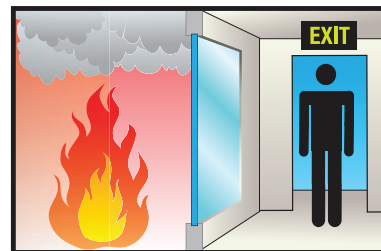
SuperLite II-XL is listed and labeled by Intertek and Underwriters Laboratories, nationally recognized testing laboratories approved by OSHA.

## APPROVALS

UL 9, UL 10B, UL 10C, UL 263, NFPA 80, NFPA 251, NFPA 252, NFPA 257, ASTM E119, ASTM E152, ASTM E163, ASTM E2074, ASTM E2010-01, CPSC 16 CFR 1201 Cat. II, ANSI Z97.1, ULC CAN4-S101, ULC CAN4-S104, ULC CAN4-S106, NFRC 100, NFRC 200, NFRC 500, ASTM C1629/C1629M, ASTM E695, ASTM D4977.

## FIRE RESISTIVE

Contains smoke, flames and blocks the passage of radiant heat.



## SPECIFICATIONS

**Thickness:** 1-3/4 in. (45 mm);  
2-3/8 in. (61 mm) when insulated with clear low-iron

**Weight:** 16 lbs./sq. ft. (79 kg/m<sup>2</sup>)  
in 1-3/4 in. (45 mm) standard profile

**Fire Rating:** 120 minutes with hose steam  
Meets ASTM E119 and UL 263

**Visible Transmittance:** 0.777 with clear standard; 0.878 with clear low-iron

**Impact Safety Rating:**  
CPSC 16 CFR 1201 Cat. I and II & ANSI Z97.1

**Hard Body Impact Classification:**  
ASTM C1629/C1629M Level 3

**Soft Body Impact Classification:**  
ASTM E695 Level 3

**Surface Abrasion Resistance:**  
ASTM D4977 Level 3



Contract Holder  
Contract 47GSAW20D0022



Made in the USA

www.safti.com

**SAFTIFIRST**  
SAFETY AND FIRE TECHNOLOGY INC.

888.653.3333

# SuperLite II-XL 120

**120 Minute  
Fire Resistive Glazing**



**Project:** Reece School in New York, NY  
**Architect:** Platt Byard Dovell White Architects LLP  
**Contract Glazier:** Industrial Window Corporation  
**Products Used:** SuperLite II-XL 120 in GPX Architectural Series



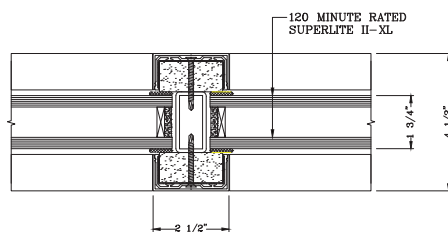
**Project:** CA Endowment Building in Los Angeles, CA  
**Architect:** House and Robertson Architects  
**Contract Glazier:** Benson Industries, Inc.  
**Products Used:** SuperLite II-XL 120 in GPX Architectural Series

Here are two examples of how fire resistive SuperLite II-XL 120 in GPX Architectural Series Framing enhances interior spaces with elegant transparency during normal use, while protecting building occupants from the danger of radiant heat and provided safe egress during a fire.

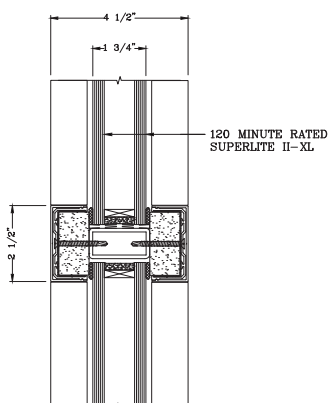
3-Part Specifications available at [www.safti.com/specifications](http://www.safti.com/specifications)

## TYPICAL DETAILS *More details available at [www.safti.com/details](http://www.safti.com/details)*

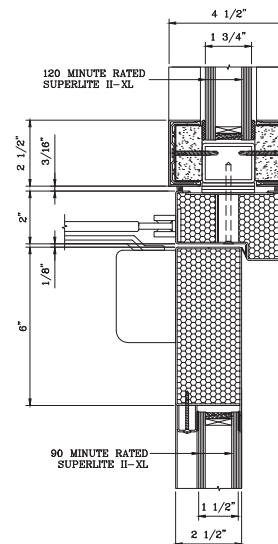
**SuperLite II-XL 120 in GPX Architectural Series Framing and SuperLite II-XL 90 in GPX Builders Series Temperature Rise Door**



**VERTICAL MULLION DETAIL**



**HORIZONTAL MULLION DETAIL**



**DOOR TOP RAIL DETAIL**

Starphire Ultra-Clear is a registered trademark owned by Vitro. The information provided herein is for general reference only. Please visit [www.safti.com](http://www.safti.com) for the most updated information. © SAFTI FIRST June 2021

**[www.safti.com](http://www.safti.com)**

**SAFTI FIRST**  
SAFETY AND FIRE TECHNOLOGY INC.

**888.653.3333**