

# SuperLite™ II·XL 60

**60 Minute  
Fire Resistive Glazing**

## PRODUCT ADVANTAGES



- ▶ **Maximum fire and impact safety with hose stream and full radiant heat protection.**
- ▶ Largest tested and approved sizes up to 4,952 in.<sup>2</sup> (3.19 m<sup>2</sup>) for door applications in standard 1-1/8 in. (29 mm) profile.
- ▶ Fully tested, approved and listed for temperature rise doors, openings and wall applications.
- ▶ Tint-free and optically clear. Perfect for property line requirements.
- ▶ Acoustical value of 42 STC.
- ▶ Available in custom architectural make-ups, such as laminated glass and energy-saving insulated units with NFRC certifications when used with GPX Architectural Series Framing.
- ▶ Can be customized to protect against forced entry, bullets, blast, hurricane, sound and more.
- ▶ 5 year manufacturer's warranty.
- ▶ USA manufactured for fast lead times and competitive pricing.
- ▶ Thin 1 in. (25 mm) profile is available up to 1,296 in.<sup>2</sup> (0.84 m<sup>2</sup>).



Now available with Starphire® Ultra-Clear Glass by PPG

### Large Sizes for Doors, Sidelites, Windows, Transoms and Walls

Fire Rating	Max. CV Area	Max. CV Width	Max. CV Height	Stops
All 60 minute applications	4,952 in. <sup>2</sup> (3.19 m <sup>2</sup> )	124 in. (3.15 m)	124 in. (3.15 m)	5/8 in. (16 mm)

1 in. stops recommended (25 mm)

## UL AND INTERTEK TESTED AND CERTIFIED



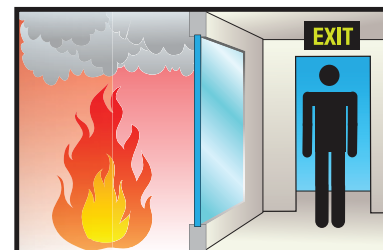
SuperLite II·XL is listed and labeled by Intertek and Underwriters Laboratories, nationally recognized testing laboratories approved by OSHA.

## APPROVALS

UL 9, UL 10B, UL 10C, UL 263, NFPA 80, NFPA 251, NFPA 252, NFPA 257, ASTM E119, ASTM E152, ASTM E163, ASTM E2074, ASTM E2010-01, CPSC 16 CFR 1201 Cat. II, ANSI Z97.1, ULC CAN4-S101, ULC CAN4-S104, ULC CAN4-S106, NFRC 100, NFRC 200, NFRC 500, ASTM C1629/C1629M, ASTM E695, ASTM D4977.

## FIRE RESISTIVE

**Contains smoke, flames and blocks the passage of radiant heat.**



## SPECIFICATIONS

**Thickness:** 1-1/8 in. (29 mm) standard and 1 in. (25 mm) thin profile;  
1-7/8 in. (48 mm) when insulated with Low-E

**Weight:** 9 lbs./sq. ft. (44 kg/m<sup>2</sup>)  
in 1-1/8 in. (29 mm) standard profile

**Sound Transmission Rating:** STC 42  
rating in 1-1/8 in. (29 mm) standard profile

**Outdoor-Indoor Transmission Class:**  
OITC 39 rating in 1-1/8 in. (29 mm)  
standard profile

**Fire Rating:** 60 minutes with hose stream  
Meets ASTM E119 and UL 263

**Impact Safety Rating:**  
CPSC 16 CFR 1201 Cat. I and II & ANSI Z97.1

**NFRC Certifications with  
GPX Architectural Series Framing:**  
0.39 U-Factor with Solarban 60  
0.31 SHGC with Solarban 60  
57 Condensation Resistance with Solarban 60

**Hard Body Impact Classification:**  
ASTM C1629/C1629M Level 3

**Soft Body Impact Classification:**  
ASTM E695 Level 3

**Surface Abrasion Resistance:**  
ASTM D4977 Level 3



**Made in the USA**

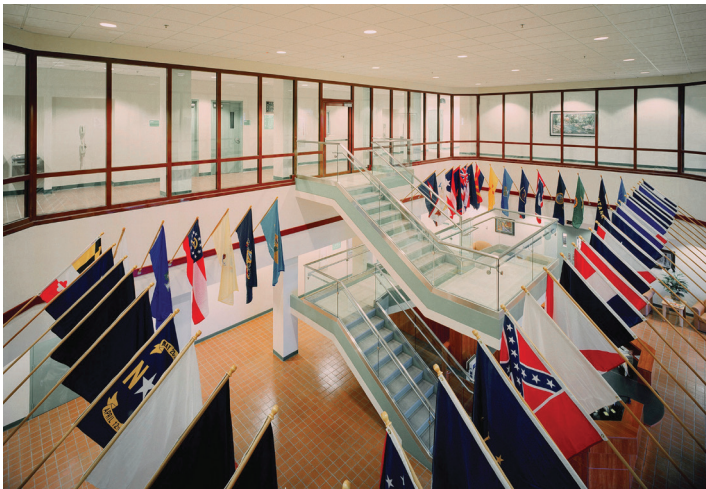
**www.safti.com**

**SAFTIFIRST™**  
SAFETY AND FIRE TECHNOLOGY INC.

**888.653.3333**

# SuperLite™ II-XL 60

**60 Minute  
Fire Resistive Glazing**



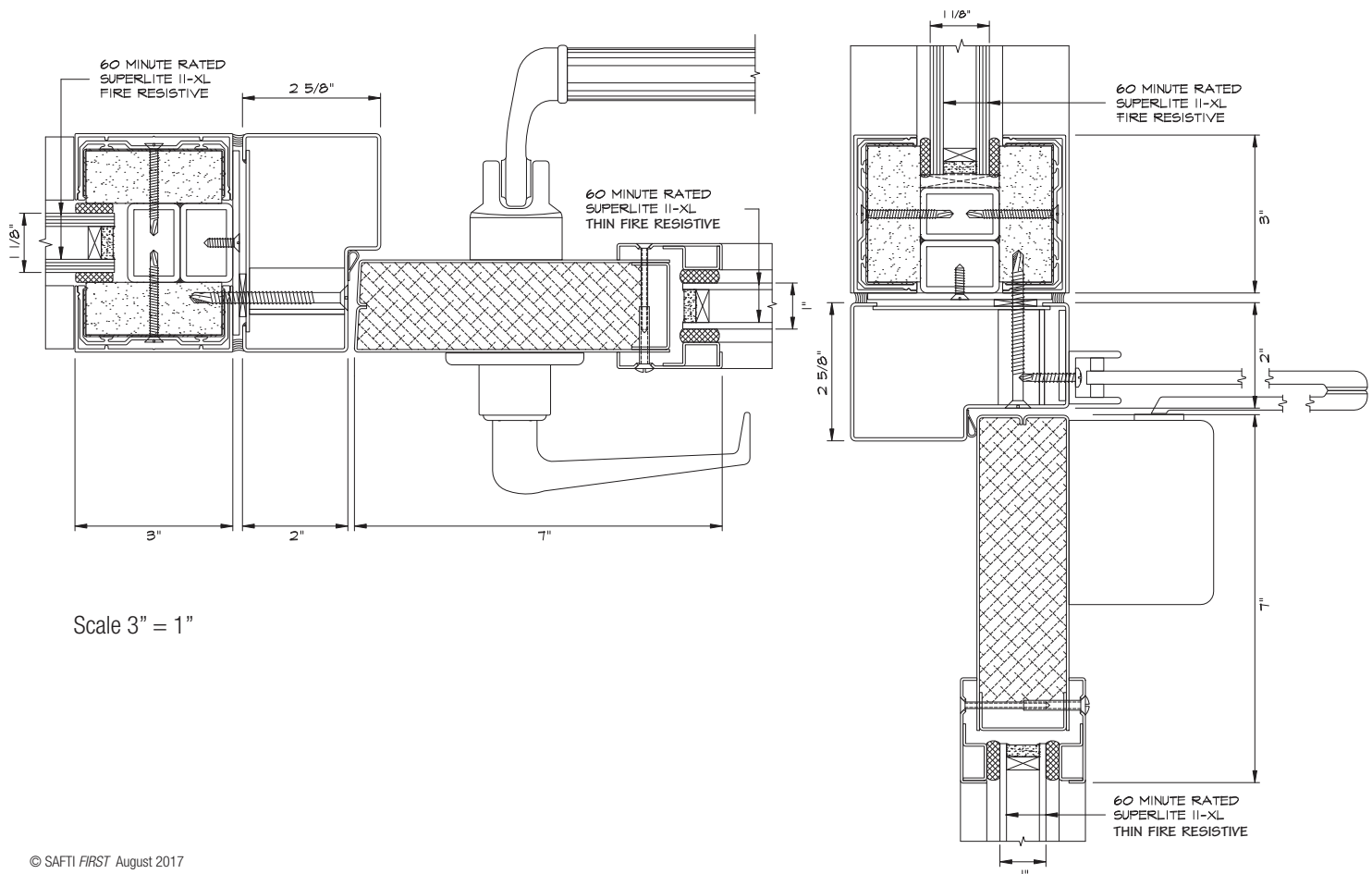
SuperLite II-XL 60 and GPX Architectural Series Framing were used to create a transparent wall system that seamlessly combines vision and light with maximum fire protection. This fire rated system also provides smooth, angular transitions along the corners to achieve the designer's intent to have a beautiful viewing area that highlights the building's focal point.

**Project:** Fort Drum Battle Simulation Center in Fort Drum, NY  
**Architect:** US Army District Corps of Engineers  
**Contract Glazier:** Northern Glass Company  
**Products Used:** SuperLite II-XL 60 in GPX Architectural Series with Wood Veneer Finish

3-Part Specifications available at [www.safti.com/specifications](http://www.safti.com/specifications)

## TYPICAL DETAILS *More details available at [www.safti.com/details](http://www.safti.com/details)*

**SuperLite II-XL 60 in GPX Architectural Series Sidelite/Transom and SuperLite II-XL 60 in GPX Builders Series Temperature Rise Door**



© SAFTI FIRST August 2017

The information provided herein is for general reference only and is subject to change without notice. Please visit [www.safti.com](http://www.safti.com) for the most up to date information.

**www.safti.com**

**SAFTI FIRST™**  
SAFETY AND FIRE TECHNOLOGY INC.

**888.653.3333**