

## PRODUCT ADVANTAGES



- ▶ **Maximum fire and impact safety with hose stream and full radiant heat protection.**
- ▶ Largest tested and approved sizes up to 4,876 in.<sup>2</sup> (3.15 m<sup>2</sup>) in standard 1-1/2 in. (39 mm) profile.
- ▶ Tint-free and optically clear. Perfect for property line requirements.
- ▶ Acoustical value of 44 STC.
- ▶ Available in custom architectural make-ups, such as laminated glass and energy-saving insulated units with NFRC certifications when used with GPX Architectural Series Framing.
- ▶ Can be customized to protect against forced entry, bullets, blast, hurricane, sound and more.
- ▶ 5 year manufacturer's warranty.
- ▶ USA manufactured for fast lead times and competitive pricing.



Now available with Starphire® Ultra-Clear Glass by PPG

### Largest Sizes for Doors and Exterior Windows

| Fire Rating     | Max. CV Area                                     | Max. CV Width       | Max. CV Height      | Stops              |
|-----------------|--|---------------------|---------------------|--------------------|
| 90 minute walls | 4,876 in. <sup>2</sup><br>(3.15 m <sup>2</sup> ) | 124 in.<br>(3.15 m) | 124 in.<br>(3.15 m) | 5/8 in.<br>(16 mm) |
| 90 minute doors | 4,990 in. <sup>2</sup><br>(3.22 m <sup>2</sup> ) | 126 in.<br>(3.2 m)  | 126 in.<br>(3.2 m)  | 5/8 in.<br>(16 mm) |

1 in. stops recommended (25 mm)

## UL AND INTERTEK TESTED AND CERTIFIED



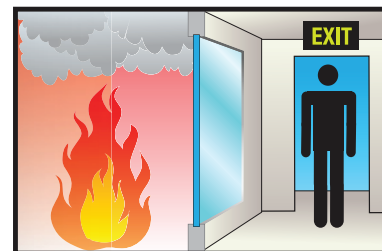
SuperLite II-XL is listed and labeled by Intertek and Underwriters Laboratories, nationally recognized testing laboratories approved by OSHA.

## APPROVALS

UL 9, UL 10B, UL 10C, UL 263, NFPA 80, NFPA 251, NFPA 252, NFPA 257, ASTM E119, ASTM E152, ASTM E163, ASTM E2074, ASTM E2010-01, CPSC 16 CFR 1201 Cat. II, ANSI Z97.1, ULC CAN4-S101, ULC CAN4-S104, ULC CAN4-S106, NFRC 100, NFRC 200, NFRC 500, ASTM C1629/C1629M, ASTM E695, ASTM D4977.

## FIRE RESISTIVE

**Contains smoke, flames and blocks the passage of radiant heat.**



## SPECIFICATIONS

**Thickness:** 1-1/2 in. (39 mm) standard thickness;  
2-1/4 in. (57 mm) when insulated with Low-E

**Weight:** 12 lbs./sq. ft. (59 kg/m<sup>2</sup>)  
in 1-1/2 in. (39 mm) standard profile

**Sound Transmission Rating:** STC 44  
rating in 1-1/2 in. (39 mm) standard profile

**Outdoor-Indoor Transmission Class:**  
OITC 40 rating in 1-1/2 in. (39 mm)  
standard profile

**Fire Rating:** 90 minutes with hose stream  
Meets ASTM E119 and UL 263

**Impact Safety Rating:**  
CPSC 16 CFR 1201 Cat. I and II & ANSI Z97.1

**NFRC Certifications with  
GPX Architectural Series Framing:**  
0.34 U-Factor wwith Solarban 60  
0.27 SHGC with Solarban 60  
55 Condensation Resistance with Solarban 60

**Hard Body Impact Classification:**  
ASTM C1629/C1629M Level 3

**Soft Body Impact Classification:**  
ASTM E695 Level 3

**Surface Abrasion Resistance:**  
ASTM D4977 Level 3

**Made in the USA**

# SuperLite™ II-XL 90

90 Minute  
Fire Resistive Glazing



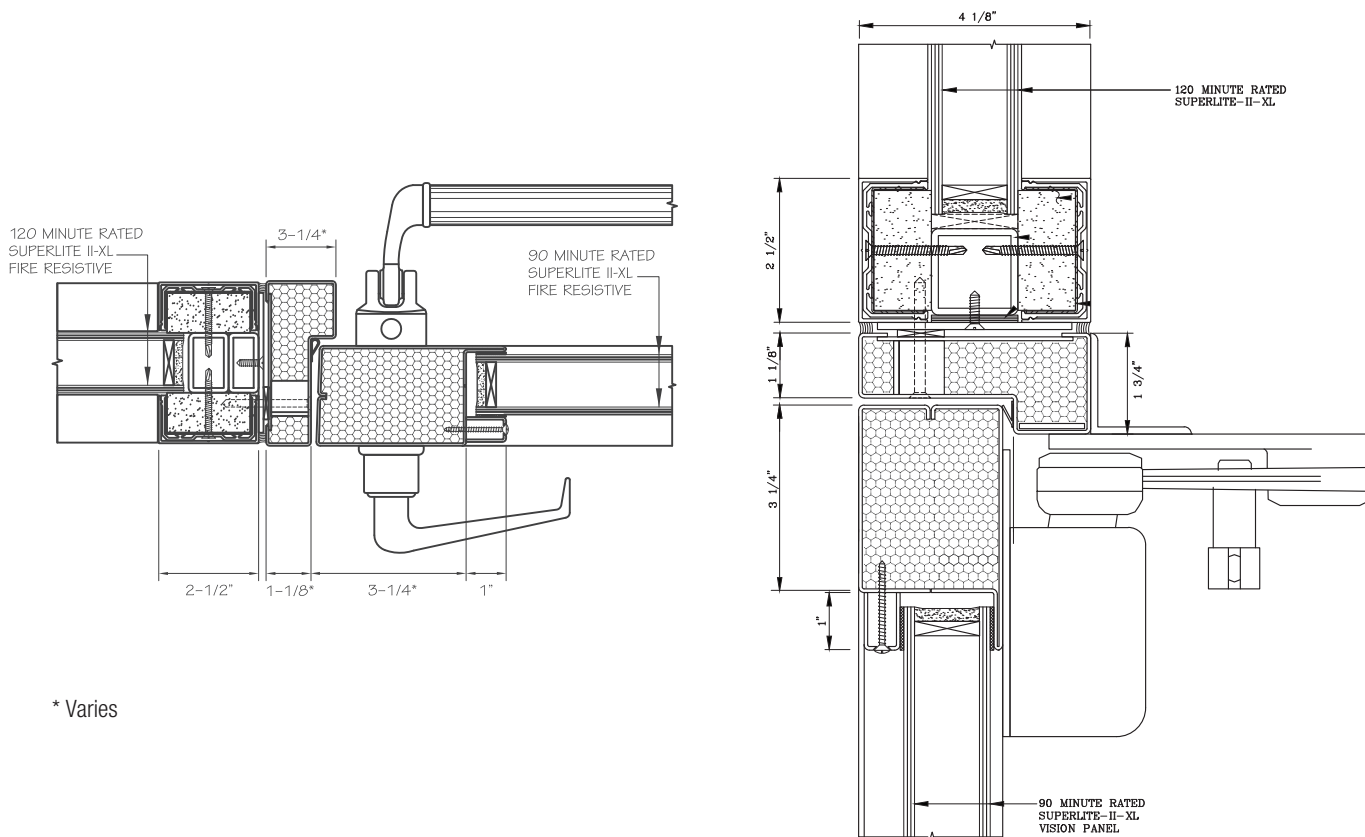
Fire resistive SuperLite II-XL in GPX Architectural Series Framing (including Doors) provides transparency to this two-hour wall; enhancing the sense of openness by maximizing natural light in interior spaces, with the added benefits of safe egress and personal security.

**Project:** CSU Fullerton Recreation Center in Fullerton, CA  
**Architect:** Langdon and Wilson  
**Contract Glazier:** Woodbridge Glass  
**Products Used:** SuperLite II-XL 120 in GPX Architectural Series Framing & SuperLite II-XL 90 in GPX Architectural Series Doors

3-Part Specifications available at [www.safti.com/specifications](http://www.safti.com/specifications)

## TYPICAL DETAILS *More details available at [www.safti.com/details](http://www.safti.com/details)*

SuperLite II-XL 120 in GPX Architectural Series Sidelite/Transom and SuperLite II-XL 90 in GPX Builders Series Temperature Rise Door



The information provided herein is for general reference only and is subject to change without notice. Please visit [www.safti.com](http://www.safti.com) for the most up to date information.

© SAFTI FIRST August 2017

[www.safti.com](http://www.safti.com)

**SAFTI FIRST™**  
SAFETY AND FIRE TECHNOLOGY INC.

888.653.3333