

# SuperLite II-XLM 120

**120 Minute Fire Resistant  
Multilaminate Glazing**

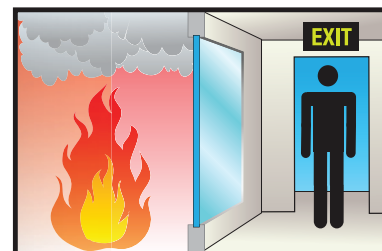
## PRODUCT ADVANTAGES



- ▶ Fire resistant multilaminated glazing offering maximum fire and safety with hose stream for 120 minute wall applications.
- ▶ Meets ASTM E-119 for full radiant heat protection and CPSC Cat. II (400 ft. lbs.) impact safety requirements.
- ▶ Can be used in interior and exterior applications, including clear butt-glazed walls for maximum vision and transparency.
- ▶ Optically clear glazing without wires or tints.
- ▶ Can be easily incorporated in GPX® Architectural Series Framing, GPX® SNAPCAP or GPX® Builders Series Temperature Rise Framing for a complete fire resistant assembly.
- ▶ Standard 5 year limited warranty.
- ▶ Fabricated in the U.S.A. for fast lead times.

## FIRE RESISTIVE

Contains smoke, flames and blocks the passage of radiant heat.



## SPECIFICATIONS

**Thickness:** 2-1/8 in. (53 mm) standard

**Weight:** 25 lbs./sq. ft. (122 kg/m<sup>2</sup>)  
in 2-1/8 in. (53 mm) standard

**Sound Reduction:** Rw=46 dB

**Fire Rating:** 120 minutes with hose stream  
Meets ASTM E119, NFPA 251 and UL 263

**Impact Safety Rating:**

CPSC 16 CFR 1201 Cat. I and II,  
ANSI Z97.1

**Light Transmission:** 71%

**R-value:** 1.18

**U-value:** 0.845

## Large Sizes for Sidelites, Windows, Transoms and Walls

Fire Rating	Max. CV Area	Max. CV Width	Max. CV Height	Stops
120 minute wall (with framing and butt-glazed)	4,256 in. <sup>2</sup> (2.75 m <sup>2</sup> )	38 in. (0.97 m)	112 in. (2.84 m)	1 in. (25.4 mm)

## 3-Part Specifications:

Available at

[www.safti.com/specifications](http://www.safti.com/specifications)

## UL AND INTERTEK TESTED AND CERTIFIED



SuperLite® II-XLM is listed and labeled by Intertek and Underwriters Laboratories, nationally recognized testing laboratories approved by OSHA.

## APPROVALS

UL 9, UL 10B, UL 10C, UL 263, NFPA 80, NFPA 251, NFPA 252, NFPA 257, ASTM E119, ASTM E152, ASTM E163, ASTM E2074, ASTM E2010-01, CPSC 16 CFR 1201 Cat. II, ANSI Z97.1, ULC CAN4-S101, ULC CAN4-S104, ULC CAN4-S106.

[www.safti.com](http://www.safti.com)

**SAFTIFIRST**  
SAFETY AND FIRE TECHNOLOGY INC.

**888.653.3333**

# SuperLite® II-XLM 120

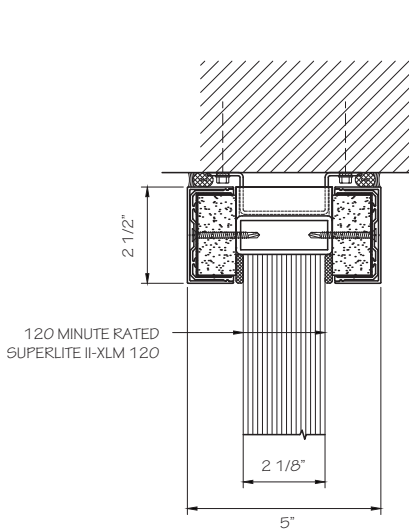
**120 Minute Fire Resistive  
Multilaminate Glazing**



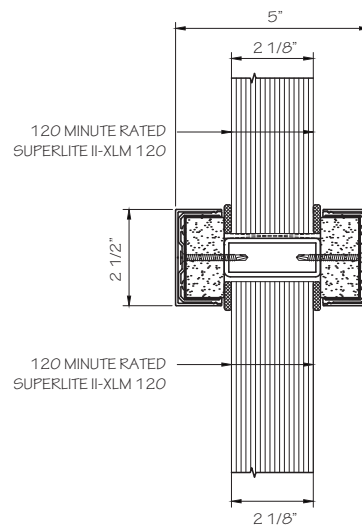
**Project:** Waste Management Headquarters in Houston, TX  
**Architect:** Perkins + Will  
**Contract Glazier:** Lakeview Glass and Mirror  
**Products Used:** SuperLite® II-XL 90 in  
GPX® Builders Series Temperature Rise Doors and  
SuperLite® II-XLM 120 in GPX® Architectural Series Wall

## TYPICAL DETAILS *More details available at [www.safti.com/details](http://www.safti.com/details)*

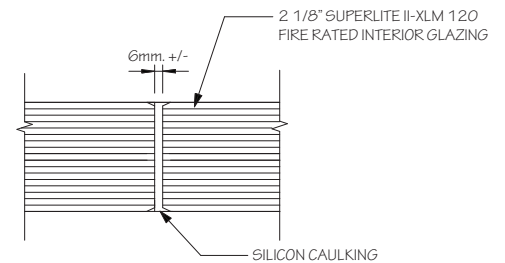
### SuperLite® II-XLM 120 in GPX Architectural Series Framing



Head Detail



Horizontal Mullion Detail



Butt-Joint Detail

Details not to scale.

The information provided herein is for general reference only and is subject to change without notice. Please visit [www.safti.com](http://www.safti.com) for the most up to date information.

© SAFTI FIRST® October 2021