

# SuperLite II-XLM 60

60 Minute Fire Resistive  
Multilaminate Glazing

## PRODUCT ADVANTAGES



- ▶ Fire resistive multilaminate glazing offering maximum fire and safety with hose stream for 60 minute wall and door applications.
- ▶ Meets ASTM E-119 for full radiant heat protection and CPSC Cat. II (400 ft. lbs.) impact safety requirements.
- ▶ Can be used in interior and exterior applications, including clear butt-glazed walls for maximum vision and transparency.
- ▶ Optically clear glazing without wires or tints.
- ▶ Can be easily incorporated in GPX® Architectural Series Framing, GPX® SNAPCAP or GPX® Builders Series Temperature Rise Framing for a complete fire resistive assembly.
- ▶ Standard 5 year limited warranty.
- ▶ Fabricated in the U.S.A. for fast lead times.

### Large Sizes for Doors, Sidelites, Windows, Transoms and Walls

Fire Rating	Max. CV Area	Max. CV Width	Max. CV Height	Stops
60 minute doors	3,855 in. <sup>2</sup> (2.49 m <sup>2</sup> )	87-5/8 in. (2.23 m)	87-5/8 in. (2.23 m)	5/8 in. (16 mm)
60 minute walls (with framing and butt-glazed)	3,855 in. <sup>2</sup> (2.49 m <sup>2</sup> )	87-5/8 in. (2.23 m)	87-5/8 in. (2.23 m)	1 in. (25.4 mm)

## UL AND INTERTEK TESTED AND CERTIFIED



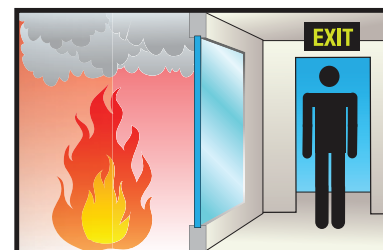
SuperLite® II-XLM is listed and labeled by Intertek and Underwriters Laboratories, nationally recognized testing laboratories approved by OSHA.

## APPROVALS

UL 9, UL 10B, UL 10C, UL 263, NFPA 80, NFPA 251, NFPA 252, NFPA 257, ASTM E119, ASTM E152, ASTM E163, ASTM E2074, ASTM E2010-01, CPSC 16 CFR 1201 Cat. II, ANSI Z97.1, ULC CAN4-S101, ULC CAN4-S104, ULC CAN4-S106.

## FIRE RESISTIVE

Contains smoke, flames and blocks the passage of radiant heat.



## SPECIFICATIONS

**Thickness:** 1 in. (25 mm) standard

**Weight:** 12.3 lbs./sq. ft. (60 kg/m<sup>2</sup>)  
in 1 in. (25 mm) standard

**Sound reduction:** Rw=42 dB

**Fire Rating:** 60 minutes with hose stream  
Meets ASTM E119 and NFPA 251

**Impact Safety Rating:**  
CPSC 16 CFR 1201 Cat. I and II,  
ANSI Z97.1

**Light Transmission:** 81%

**R-value:** 1.14

**U-value:** 0.881

### 3-Part Specifications:

Available at

[www.safti.com/specifications](http://www.safti.com/specifications)

# SuperLite® II-XLM 60

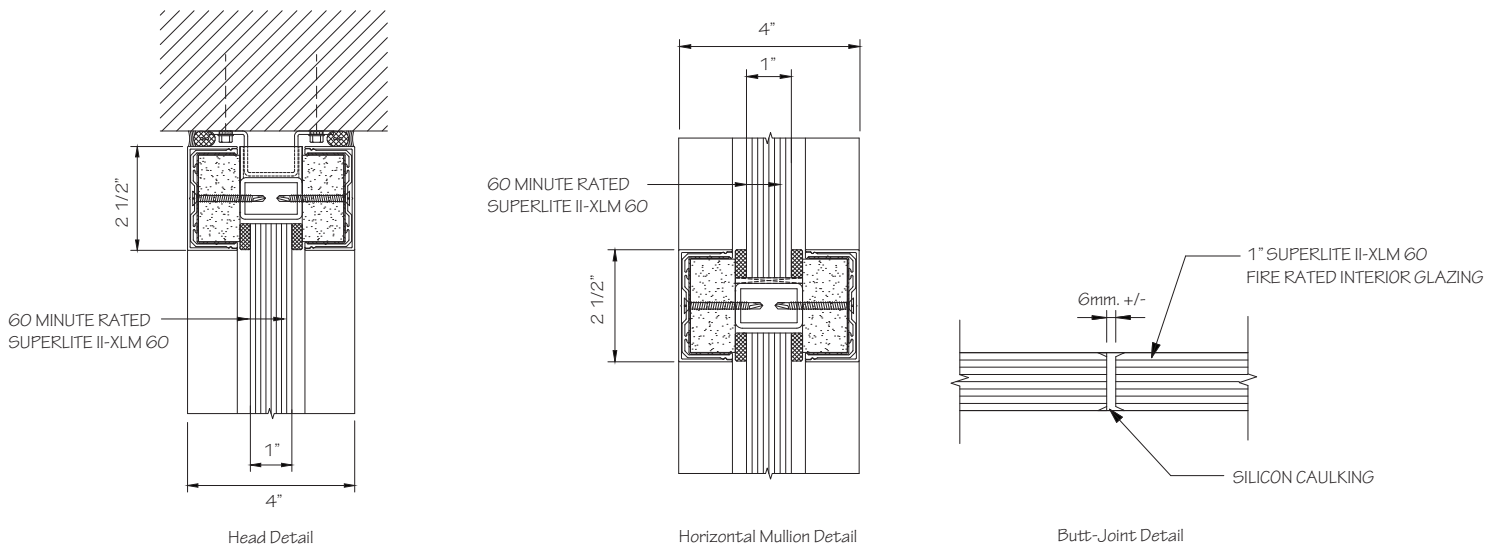
60 Minute Fire Resistive  
Multilaminate Glazing



SuperLite® II-XLM 60 in a 1-hour  
butt-glazed wall application

## TYPICAL DETAILS *More details available at [www.safti.com/details](http://www.safti.com/details)*

### SuperLite® II-XLM 60 in GPX® Architectural Series Framing



Details not to scale.

© SAFTI FIRST® October 2021

The information provided herein is for general reference only and is subject to change without notice. Please visit [www.safti.com](http://www.safti.com) for the most up to date information.

[www.safti.com](http://www.safti.com)

**SAFTI FIRST**  
SAFETY AND FIRE TECHNOLOGY INC.

888.653.3333