

SuperSecure™ II-XLS 45-120

45-120 Minute
Clear, Forced Entry and
Fire Resistive Rated Glazing

PRODUCT ADVANTAGES



- ▶ The only wire-free, fire resistive rated security glazing to meet CDCR 860-14a testing requirements and ASTM F1915 Grade 1-4.
- ▶ Meets ASTM E119 / UL 263 / NFPA 251 requirements with hose stream requirements.
- ▶ Largest tested and listed sizes for wire-free, fire resistive rated security glazing.
- ▶ High STC ratings.
- ▶ 5 year manufacturer's warranty.
- ▶ USA manufactured for fast lead times and competitive pricing.

PRODUCT SIZES

Largest Sizes for Doors, Openings and Walls

Fire Rating	Max. CV Area	Max. CV Width	Max. CV Height	Stops
45-60 minutes	4,952 in. ² (3.19 m ²)	96 in. (2.43 m)	96 in. (2.43 m)	1 in. (125.4 mm)
90-120 minutes	4,876 in. ² (3.15 m ²)	96 in. (2.43 m)	96 in. (2.43 m)	1 in. (125.4 mm)

Please call SAFTI FIRST for custom sizes exceeding 96 in. (2.44 m) up to 124 in. (3.15 m)

INTERTEK/WHI TESTED AND CERTIFIED



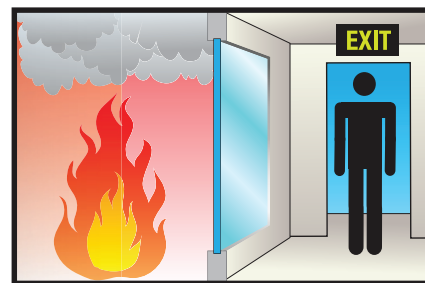
SuperSecure II-XLS is listed and labeled by Intertek/Warnock-Hersey Inc., a nationally recognized testing laboratory approved by OSHA.

APPROVALS

UL, UL 10B, UL 10C, UL 263, NFPA 251, NFPA 252, NFPA 257, ASTM E119, ASTM E152, ASTM E163, ASTM E2074, ASTM E2010-01, ASTM F1233, ASTM F1915, CPSC 16 CFR 1201 Cat. II, CDCR 860-14a.

FIRE RESISTIVE

Contains smoke and flames, and blocks the passage of radiant heat.



SPECIFICATIONS

For thickness and weight see reverse side.

Appearance:

Clear, non-wired glazing

Fire Rating:

45-120 minutes with hose stream
Meets ASTM E119 / UL 263 / NFPA 251

Impact Safety Rating:

CPSC 16 CFR 1201 Cat. I and II

Forced Entry Rating:

CDCR 860-14a testing requirements & ASTM F1915 Grade 1-4

3-Part Specifications:

Available at

www.safti.com/specifications



Made in the USA

www.safti.com

SINCE 1981

888.653.3333

SuperSecure™ II-XLS 45-120

**45-120 Minute
Clear, Forced Entry and
Fire Resistive Rated Glazing**

SPECIFICATIONS (continued)

All dimensions and weights are nominal

CDCR

Fire Rating	Approx. Thickness	Approx. Weight
45 minutes	1.375 in. (34.93 mm)	12 lb/ft ² (58.59 kg/m ²)
60 minutes	1.75 in. (44.45 mm)	13.5 lb/ft ² (65.91 kg/m ²)
90-120 minutes	2.125 in. (53.98 mm)	18 lb/ft ² (87.88 kg/m ²)

ASTM Grade 1

Fire Rating	Approx. Thickness	Approx. Weight
45 minutes	1.75 in. (44.45 mm)	16.3 lb/ft ² (79.59 kg/m ²)
60 minutes	2.125 in. (53.97 mm)	17.3 lb/ft ² (84.47 kg/m ²)
90-120 minutes	2.5 in. (63.5 mm)	20.3 lb/ft ² (99.11 kg/m ²)

ASTM Grade 2

Fire Rating	Approx. Thickness	Approx. Weight
45 minutes	1.5 in. (3.81 mm)	14.16 lb/ft ² (69.14 kg/m ²)
60 minutes	1.875 in. (47.62 mm)	15.16 lb/ft ² (74.01 kg/m ²)
90-120 minutes	2.25 in. (57.15 mm)	18.16 lb/ft ² (88.66 kg/m ²)

ASTM Grade 3

Fire Rating	Approx. Thickness	Approx. Weight
45 minutes	1.375 in. (34.93 mm)	13.8 lb/ft ² (67.38 kg/m ²)
60 minutes	2.125 in. (53.98 mm)	14.8 lb/ft ² (72.26 kg/m ²)
90-120 minutes	2.5 in. (63.5 mm)	17.8 lb/ft ² (86.91 kg/m ²)

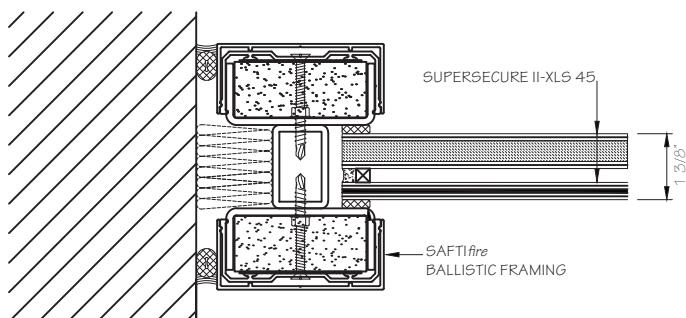
ASTM Grade 4

Fire Rating	Approx. Thickness	Approx. Weight
45 minutes	1.25 in. (31.75 mm)	13.1 lb/ft ² (63.96 kg/m ²)
60 minutes	1.625 in. (41.28 mm)	14.1 lb/ft ² (68.84 kg/m ²)
90-120 minutes	2 in. (50.80 mm)	17.1 lb/ft ² (83.49 kg/m ²)

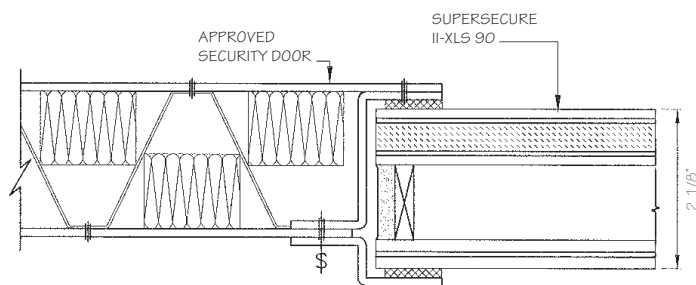
TYPICAL DETAILS

More details available at www.safti.com/details

SuperSecure II-XLS 45 in SAFTI^{fire} Ballistic Framing (CDCR)



SuperSecure II-XLS 90 in approved security door framing (CDCR)



The information provided herein is for general reference only. Please visit www.safti.com for the most updated information. © SAFTI FIRST June 2014

www.safti.com

SAFTI^{fire}FIRST
SINCE 1981

888.653.3333