

SuperLite I

20 Minute
Fire Protective Glazing

PRODUCT ADVANTAGES



FIRE RATED



GREEN



IMPACT RATED



THERMAL SHOCK



POSITIVE PRESSURE

- ▶ Most economical fire and safety rated glazing available.
- ▶ Provides superior optical clarity over ceramics.
- ▶ Meets the highest human impact safety requirements.
- ▶ Can be used for interior and exterior applications.
- ▶ Available in specialty architectural make-ups.
- ▶ Lifetime manufacturer's warranty.
- ▶ USA manufactured for fast delivery and competitive pricing.


STARPHIRE
ULTRA-CLEAR® GLASS

Now available with *Starphire Ultra-Clear®* glass by Vitro

20 MINUTE APPLICATIONS

Application	Max. CV Area	Max. CV Width	Max. CV Height	Stops
Steel Door	3,341 in. ² (2.16 m ²)	35-1/8 in. (0.89 m)	95-1/8 in. (2.42 m)	5/8 in. (16 mm)
Wood Door	3,299 in. ² (2.13 m ²)	36-1/8 in. (0.91 m)	91-5/16 in. (2.32 m)	5/8 in. (16 mm)
Aluminum Door	3,436 in. ² (2.22 m ²)	36-3/4 in. (0.93 m)	95-1/2 in. (2.43 m)	5/8 in. (16 mm)
Steel, Wood and Aluminum Sidelites* Transoms*	5,760 in. ² (3.72 m ²)	96 in. (2.44 m)	95-1/2 in. (2.43 m)	5/8 in. (16 mm)
Steel Windows*	5,760 in. ² (3.72 m ²)	96 in. (2.44 m)	95-1/2 in. (2.43 m)	5/8 in. (16 mm)

* Requires AHJ approval for these applications because it is tested without hose stream

UL AND INTERTEK TESTED AND CERTIFIED



SuperLite I is listed and labeled by Intertek and Underwriters Laboratories, nationally recognized testing laboratories approved by OSHA.

Also available in the following decorative patterns:



Rain

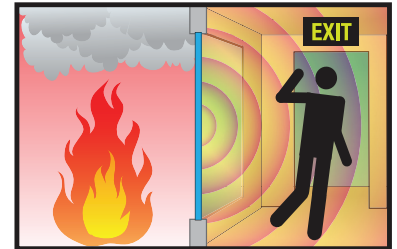
Narrow Reed

P-516

Satin Etched

FIRE PROTECTIVE

Contains smoke and flames.
Does not block radiant heat.



For fire resistive glazing that blocks radiant heat see SuperLite II-XL.

SPECIFICATIONS

Thickness: 1/4 in. (6 mm)

Weight: 3.0 lbs./sq.ft. (15 kg/m²)

Fire Rating:

20 minutes without hose stream

Sound Transmission Rating:

STC 28

Solar Heat Gain Coefficient:

0.82 SHGC

Impact Safety Rating:

CPSC 16 CFR 1201 Cat. I and II

3-Part Specifications:

Available at

www.safti.com/specifications

APPROVALS

UL 9, UL 10B, UL 10C, NFPA 80, NFPA 252, NFPA 257, ASTM E152, ASTM E163, ASTM E2074, ASTM E2010-01, CPSC 16 CFR 1201 Cat. II., ANSI Z97.1



Made in the USA

www.safti.com

 **SAFTI***FIRST*
SAFETY AND FIRE TECHNOLOGY INC.

888.653.3333

SuperLite® I

20 Minute
Fire Protective Glazing

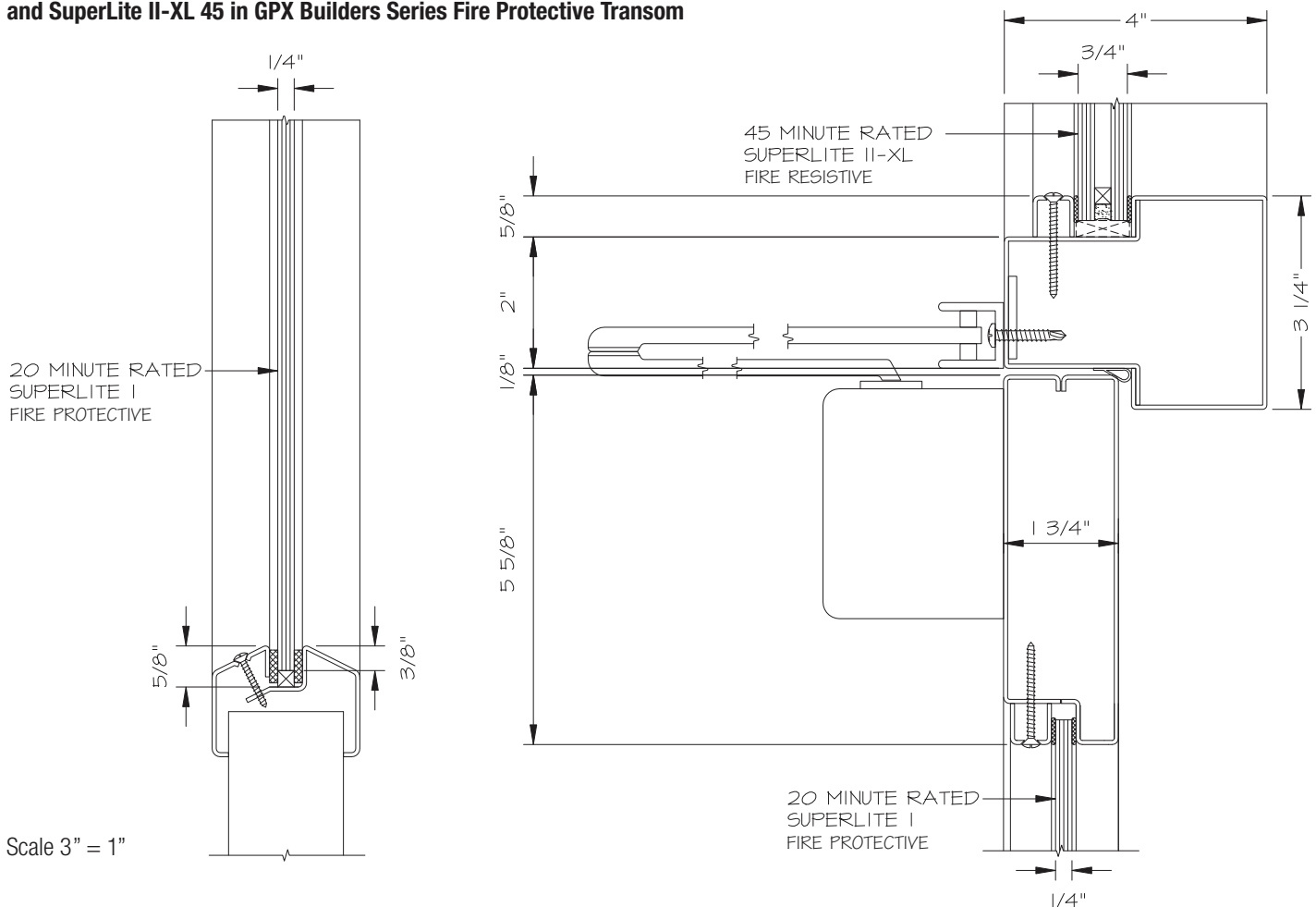


The architect used SuperLite I for the 20 minute door vision panels and SuperLite II-XL 45 for the sidelites to create a cost-effective, wire-free solution that meets all the fire and safety requirements for this fire protective application.

Project: Sunset Elementary School in San Ysidro, CA
Architect: Coup Smith Diaz Architects
Contract Glazier: Plaza Glass Company
Products Used: SuperLite I in GPX Builders Series Fire Protective Door and SuperLite II-XL 45 in GPX Builders Series Fire Protective Framing

TYPICAL DETAILS More details available at www.safti.com/details

SuperLite I in vision kit and GPX Builders Series Fire Protective Door
and SuperLite II-XL 45 in GPX Builders Series Fire Protective Transom



Starphire Ultra-Clear is a registered trademark owned by Vitro. The information provided herein is for general reference only. Please visit www.safti.com for the most updated information. © SAFTI FIRST, January 2020

www.safti.com

SAFTI FIRST
SAFETY AND FIRE TECHNOLOGY INC.

888.653.3333