

### PRODUCT ADVANTAGES



- ▶ The first clear, fire resistive and hurricane rated, aluminum clad wall and door systems up to 2 hours available with Florida Building Code Approvals and UL certifications.
- ▶ Maximum design loads up to +/- 80 PSF.
- ▶ Glazing make-up is SuperLite II-XL with 9/16 in. DuPont Sentry Plus Laminated Glass.
- ▶ Offered in standard and custom finishes including high performance fluoropolymer finishes by PPG, clear anodized, bronze anodized, black anodized, Decoral<sup>®</sup>, any species of wood veneer, ornamental metal and more.
- ▶ 5 year manufacturer's warranty.
- ▶ USA manufactured for fast lead times and competitive pricing.

### FLORIDA PRODUCT APPROVAL

- ▶ FL 16382 for walls and FL 16888 for single and pair doors.
- ▶ Complies with High Velocity Hurricane Zone (HVHZ) testing requirements.
- ▶ Dow Corning 995 to be used as the perimeter sealant.
- ▶ Approvals include: ASTM E119, NFPA 251, UL 263, ASTM E283, ASTM E331, ASTM 547, TAS 202, FBC 1626.2 (TAS 201 and TAS 203), AAMA 1302.5-76 and 1303.5-76, ASTM E1300.

### TEXAS DEPARTMENT OF INSURANCE APPROVAL

- ▶ CWSF-50 for curtain wall and storefront and DR-798 for single and pair doors.
- ▶ Meet's TDI's criteria for protection from windborne debris in Inland I and Seaward zones.
- ▶ Approvals include: ASTM E-119, NFPA 251, UL 263, ASTM E330, ASTM E331, ASTM E293, ASTM E547, ASTM E1886, ASTM E1996, ASTM E1300, TAS 201, TAS 202, TAS 203, AMMA 101/I.S.2/NAFS-02.

### UL CERTIFICATIONS

- ▶ UL listing R25144 for Wind-Resistant Building Components.
- ▶ Approvals include: ASTM E119, NFPA 251, UL 263, TAS 201, TAS 202, TAS 203, ASTM E1996, ASTM E330, ASTM E1886, ANSI/SDI A250.13.

#### WINDOWS/WALLS (For UL Certifications):

Fire Rating	Max. CV Area	Max. CV Width	Max. CV Height
45-60 minutes	4,952 sq. in. (3.15 m <sup>2</sup> )	124 in. (3.15 m)	124 in. (3.15 m)
90-120 minutes	4,876 sq. in. (3.15 m <sup>2</sup> )	124 in. (3.15 m)	124 in. (3.15 m)

#### WINDOWS/WALLS (FOR FLORIDA AND TEXAS APPROVALS):

Fire Rating	Max. CV Area	Max. CV Width	Max. CV Height
60 minutes	4,952 sq. in. (3.19 m <sup>2</sup> )	124 in. (3.15 m)	124 in. (3.15 m)
90-120 minutes	4,876 sq. in. (3.15 m <sup>2</sup> )	124 in. (3.15 m)	124 in. (3.15 m)

#### DOORS (For UL Certifications):

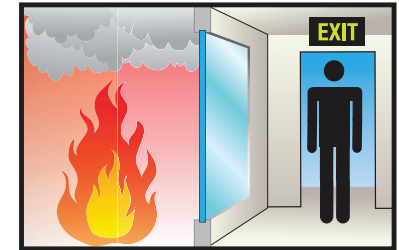
Fire Rating	Max. Door Opening (Single Door)	Max. Door Opening (Pair Door)
60-90 minutes	42 in. x 84 in. (1.07 m x 2.13 m)	108 in. x 108 in. (2.74 m x 2.74 m)

#### DOORS (FOR FLORIDA AND TEXAS APPROVALS):

Fire Rating	Max. Door Opening (Single Door)	Max. Door Opening (Pair Door)
60-90 minutes	52-1/2 in. x 105-1/4 in. (1.33 m x 2.67 m)	104-1/2 in. x 105-1/4 in. (2.65 m x 2.67 m)

### FIRE RESISTIVE

Contains smoke and flames, and blocks the passage of radiant heat.



### SPECIFICATIONS

**Glass Make-Up:** SuperLite II-XL with 9/16 in. DuPont Sentry Plus Laminated Glass

**Wall Frame Profile:** 3 in. at the perimeter and 5 in. at the intermediates

**Door Frame Profile:** 5 in. vertical stile, 5 in. head and 10 in. bottom rail (bottom rail can be modified with AHJ approval)

**Frame Weight:** Approx. 12 lbs./lineal ft.

### UL AND INTERTEK TESTED & CERTIFIED



Listed and labeled by Intertek, and Underwriters Laboratories, nationally recognized testing laboratories approved by OSHA.

#### 3-Part Specifications:

Available at

[www.safti.com/specifications](http://www.safti.com/specifications)



Made in the USA

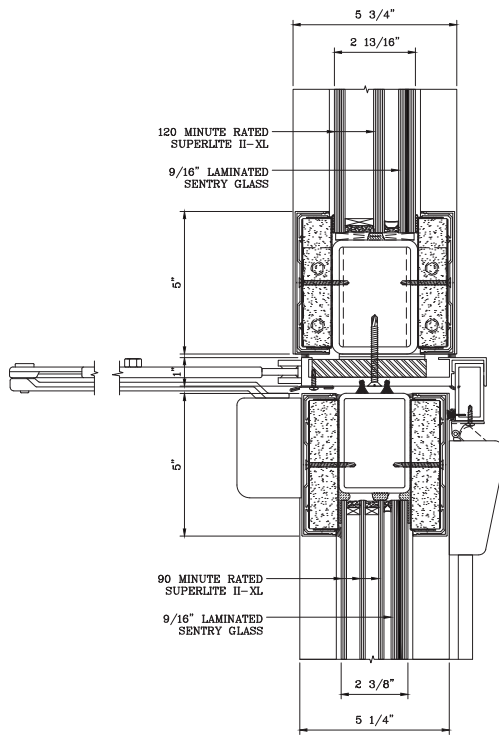


The GPX Hurricane System provides maximum fire and hurricane resistance in one aesthetically pleasing, easy to install glazed assembly that can be further customized to include energy efficient, decorative or sound abating make-ups. The frames are offered in standard and custom finishes including high performance fluoropolymer finishes by PPG, clear anodized, bronze anodized, black anodized, Decoral<sup>®</sup>, ornamental metal, and more. This innovative system provides a breakthrough for designers who, in the past, either put fire shutters on hurricane impact glazing, or put hurricane shutters on fire rated glass.

**Project:** Las Olas Beach Club and Condominiums in Ft. Lauderdale, FL  
**Architect:** The Sieger Suarez Architectural Partnership  
**Contract Glazier:** RC Aluminum  
**Products Used:** Fire and Hurricane Rated SuperLite II-XL 90 and 120 in GPX Hurricane Framing

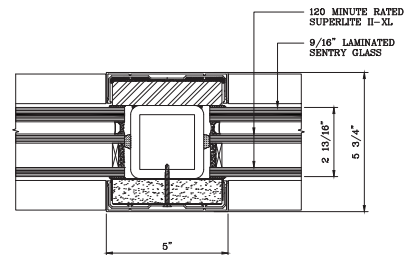
### TYPICAL DETAILS *More details available at [www.safti.com/details](http://www.safti.com/details)*

#### 120 minute GPX Hurricane Wall with 90 minute GPX Hurricane Door

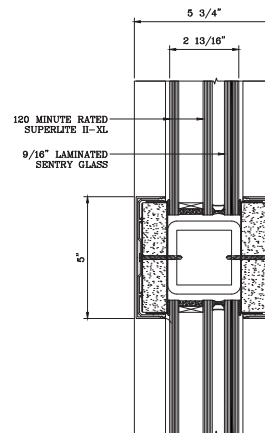


DOOR TOP RAIL DETAIL

#### 120 minute GPX Hurricane Wall



VERTICAL MULLION DETAIL



HORIZONTAL MULLION DETAIL

The information provided herein is for general reference only and subject to change without notice. Please visit [www.safti.com](http://www.safti.com) for the most up to date information. © SAFTI FIRST April 2020