

PRODUCT ADVANTAGES



- ▶ **Maximum fire and impact safety with hose stream and full radiant heat protection.**
- ▶ Largest tested and approved sizes up to 4,876 in.² (3.15 m²) in standard 1-1/2 in. (38 mm) profile.
- ▶ Tint-free and optically clear. Perfect for property line requirements.
- ▶ Acoustical value of 44 STC.
- ▶ Available in custom architectural make-ups, such as laminated glass and energy-saving insulated units with NFRC certifications when used with GPX Architectural Series Framing.
- ▶ 5 year manufacturer's warranty.
- ▶ USA manufactured for fast lead times and competitive pricing.



Now available with Starphire® Ultra-Clear Glass by PPG

Largest Sizes for Sidelites, Windows, Transoms and Walls

Fire Rating	Max. CV Area	Max. CV Width	Max. CV Height	Stops
All 120 minute applications	4,876 in. ² (3.15 m ²)	124 in. (3.15 m)	124 in. (3.15 m)	5/8 in. (16 mm)

1 in. stops recommended (25 mm)

UL AND INTERTEK/WHI TESTED AND CERTIFIED



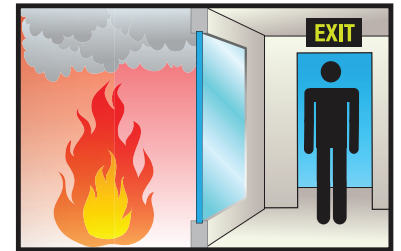
SuperLite II-XL is listed and labeled by Intertek/Warnock-Hersey Inc. and Underwriters Laboratories, nationally recognized testing laboratories approved by OSHA.

APPROVALS

UL 9, UL 10B, UL 10C, UL 263, NFPA 80, NFPA 251, NFPA 252, NFPA 257, ASTM E119, ASTM E152, ASTM E163, ASTM E2074, ASTM E2010-01, CPSC 16 CFR 1201 Cat. II, ULC CAN4-S101, ULC CAN4-S104, ULC CAN4-S106, NFRC 100, NFRC 200, NFRC 500.

FIRE RESISTIVE

Contains smoke, flames and blocks the passage of radiant heat.



SPECIFICATIONS

Thickness: 1-1/2 in. (38 mm) standard thickness;
2-1/4 in. (57 mm) when insulated with Low-E

Weight: 12 lbs./sq. ft. (59 kg/m²)
in 1-1/2 in. (38 mm) standard profile

Sound Transmission Rating: STC 44
rating in 1-1/2 in. (38 mm) standard profile

Fire Rating: 120 minutes with hose stream
Meets ASTM E119 and NFPA 251

Impact Safety Rating:
CPSC 16 CFR 1201 Cat. I and II

**NFRC Certifications with
GPX Architectural Series Framing:**

0.34 U-Factor when insulated with
Solarban 60

0.27 SHGC when insulated with
Solarban 60

55 Condensation Resistance when
insulated with Solarban 60

3-Part Specifications:

Available at

www.safti.com/specifications



Made in the USA

SuperLite™ II-XL 120

120 Minute
Fire Resistive Glazing



Project: Reece School in New York, NY
Architect: Platt Byard Dovell White Architects LLP
Contract Glazier: Industrial Window Corporation
Products Used: SuperLite II-XL 120 in GPX Architectural Series

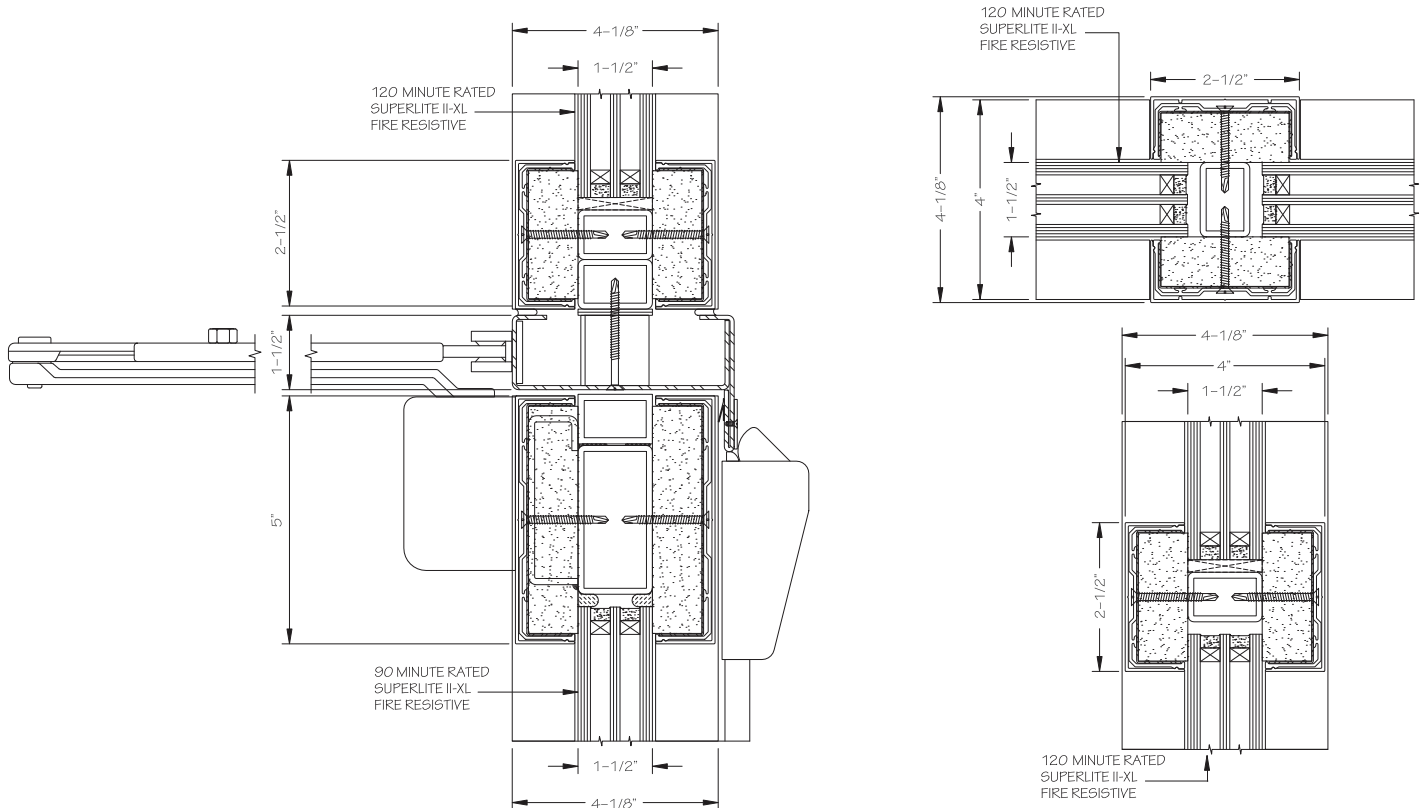


Project: CA Endowment Building in Los Angeles, CA
Architect: House and Robertson Architects
Contract Glazier: Benson Industries, Inc.
Products Used: SuperLite II-XL 120 in GPX Architectural Series

Here are two examples of how fire resistive SuperLite II-XL 120 in GPX Architectural Series Framing enhances interior spaces with elegant transparency during normal use, while protecting building occupants from the danger of radiant heat and providing safe egress during a fire.

TYPICAL DETAILS *More details available at www.safti.com/details*

SuperLite II-XL 120 in GPX Architectural Series Framing and SuperLite II-XL 90 in GPX Architectural Series Door



The information provided herein is for general reference only and is subject to change without notice. Please visit www.safti.com for the most up to date information.

© SAFTI FIRST March 2015

www.safti.com

SAFTI FIRST
SINCE 1981

888.653.3333