

PRODUCT ADVANTAGES



- ▶ **Maximum fire and impact safety with hose stream and full radiant heat protection.**
- ▶ Largest tested and approved sizes up to 4,876 in.² (3.15 m²) in standard 1-1/2 in. (38 mm) profile.
- ▶ Tint-free and optically clear. Perfect for property line requirements.
- ▶ Acoustical value of 44 STC.
- ▶ Available in custom architectural make-ups, such as laminated glass and energy-saving insulated units with NFRC certifications when used with GPX Architectural Series Framing.
- ▶ Can be customized to protect against forced entry, bullets, blast, hurricane, sound and more.
- ▶ 5 year manufacturer's warranty.
- ▶ USA manufactured for fast lead times and competitive pricing.



Now available with Starphire® Ultra-Clear Glass by PPG

Largest Sizes for Doors and Exterior Windows

Fire Rating	Max. CV Area	Max. CV Width	Max. CV Height	Stops
90 minute walls	4,876 in. ² (3.15 m ²)	124 in. (3.15 m)	124 in. (3.15 m)	5/8 in. (16 mm)
90 minute doors	4,990 in. ² (3.22 m ²)	126 in. (3.2 m)	126 in. (3.2 m)	5/8 in. (16 mm)

1 in. stops recommended (25 mm)

UL AND INTERTEK TESTED AND CERTIFIED



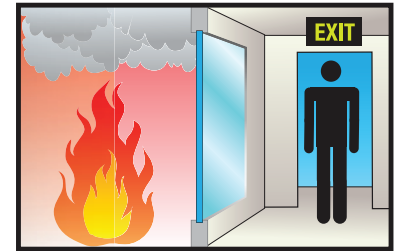
SuperLite II-XL is listed and labeled by Intertek and Underwriters Laboratories, nationally recognized testing laboratories approved by OSHA.

APPROVALS

UL 9, UL 10B, UL 10C, UL 263, NFPA 80, NFPA 251, NFPA 252, NFPA 257, ASTM E119, ASTM E152, ASTM E163, ASTM E2074, ASTM E2010-01, CPSC 16 CFR 1201 Cat. II, ANSI Z97.1, ULC CAN4-S101, ULC CAN4-S104, ULC CAN4-S106, NFRC 100, NFRC 200, NFRC 500.

FIRE RESISTIVE

Contains smoke, flames and blocks the passage of radiant heat.



SPECIFICATIONS

Thickness: 1-1/2 in. (38 mm) standard thickness;
2-1/4 in. (57 mm) when insulated with Low-E

Weight: 12 lbs./sq. ft. (59 kg/m²)
in 1-1/2 in. (38 mm) standard profile

Sound Transmission Rating: STC 44
rating in 1-1/2 in. (38 mm) standard profile

Fire Rating: 90 minutes with hose stream
Meets ASTM E119 and NFPA 251

Impact Safety Rating:
CPSC 16 CFR 1201 Cat. I and II

NFRC Certifications with GPX Architectural Series Framing:
0.34 U-Factor when insulated with Solarban 60

0.27 SHGC when insulated with Solarban 60

55 Condensation Resistance when insulated with Solarban 60

3-Part Specifications:
Available at
www.safti.com/specifications

Made in the USA

SuperLite™ II-XL 90

90 Minute
Fire Resistive Glazing

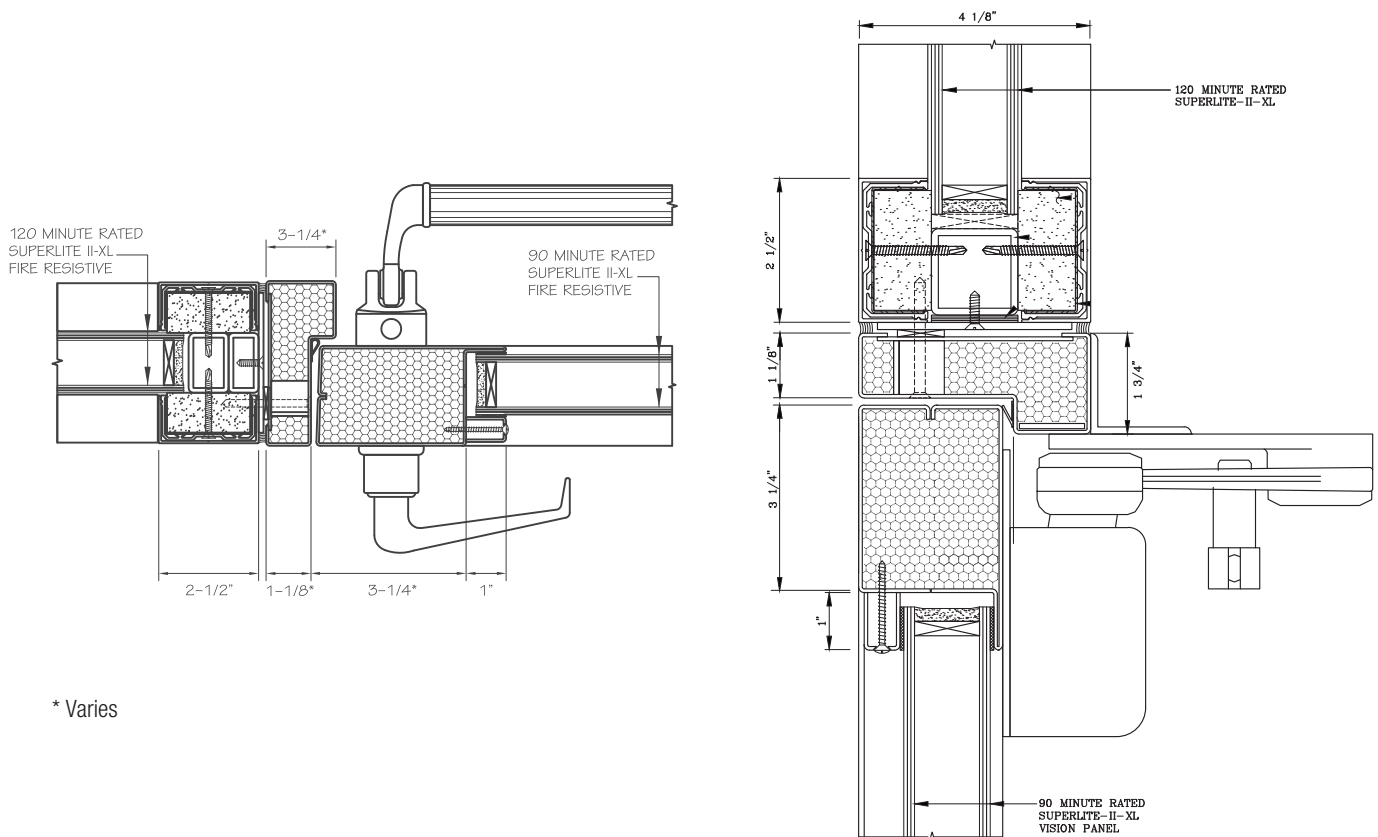


Fire resistive SuperLite II-XL in GPX Architectural Series Framing (including Doors) provides transparency to this two-hour wall; enhancing the sense of openness by maximizing natural light in interior spaces, with the added benefits of safe egress and personal security.

Project: CSU Fullerton Recreation Center in Fullerton, CA
Architect: Langdon and Wilson
Contract Glazier: Woodbridge Glass
Products Used: SuperLite II-XL 120 in GPX Architectural Series Framing & SuperLite II-XL 90 in GPX Architectural Series Doors

TYPICAL DETAILS More details available at www.safti.com/details

SuperLite II-XL 120 in GPX Architectural Series Sidelite/Transom and SuperLite II-XL 90 in GPX Builders Series Temperature Rise Door



The information provided herein is for general reference only and is subject to change without notice. Please visit www.safti.com for the most up to date information.

© SAFTI FIRST October 2016