

SuperLite II-XL 120

120 Minute
Fire Resistive Glazing

PRODUCT ADVANTAGES



- ▶ **Maximum fire and impact safety with hose stream and full radiant heat protection.**
- ▶ Largest tested and approved sizes up to 4,876 in.² (3.15 m²) in standard 1-1/2 in. (39 mm) profile.
- ▶ Tint-free and optically clear. Perfect for property lines requirements.
- ▶ Available in custom architectural make-ups, such as laminated glass and energy-saving insulated units.
- ▶ Can be customized to protect against forced entry, bullets, blast, hurricane and more.
- ▶ 5 year manufacturer's warranty.
- ▶ USA manufactured for fast lead times and competitive pricing.



Now available with *Starphire Ultra-Clear*® glass by Vitro

Largest Sizes for Sidelites, Windows, Transoms and Walls

Fire Rating	Max. CV Area	Max. CV Width	Max. CV Height	Stops
All 120 minute wall applications	4,876 in. ² (3.15 m ²)	124 in. (3.15 m)	124 in. (3.15 m)	5/8 in. (16 mm)

1 in. stops recommended (25 mm)

UL AND INTERTEK TESTED AND CERTIFIED

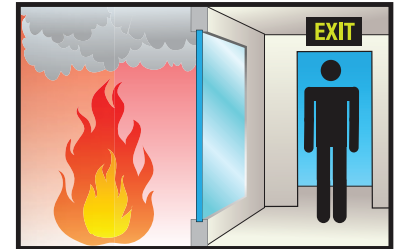


SuperLite II-XL is listed and labeled by Intertek and Underwriters Laboratories, nationally recognized testing laboratories approved by OSHA.



FIRE RESISTIVE

Contains smoke, flames and blocks the passage of radiant heat.



SPECIFICATIONS

Thickness: 1-3/4 in. (45 mm);
2-3/8 in. (61 mm) when insulated with Low-E

Weight: 16 lbs./sq. ft. (79 kg/m²)
in 1-3/4 in. (45 mm) standard profile

Fire Rating: 120 minutes with hose steam
Meets ASTM E119 and UL 263

Impact Safety Rating:
CPSC 16 CFR 1201 Cat. I and II & ANSI Z97.1

Hard Body Impact Classification:
ASTM C1629/C1629M Level 3

Soft Body Impact Classification:
ASTM E695 Level 3

Surface Abrasion Resistance:
ASTM D4977 Level 3

APPROVALS

UL 9, UL 10B, UL 10C, UL 263, NFPA 80, NFPA 251, NFPA 252, NFPA 257, ASTM E119, ASTM E152, ASTM E163, ASTM E2074, ASTM E2010-01, CPSC 16 CFR 1201 Cat. II, ANSI Z97.1, ULC CAN4-S101, ULC CAN4-S104, ULC CAN4-S106, NFRC 100, NFRC 200, NFRC 500, ASTM C1629/C1629M, ASTM E695, ASTM D4977.

SuperLite II-XL 120

120 Minute
Fire Resistive Glazing



Project: Reece School in New York, NY
Architect: Platt Byard Dovell White Architects LLP
Contract Glazier: Industrial Window Corporation
Products Used: SuperLite II-XL 120 in GPX Architectural Series



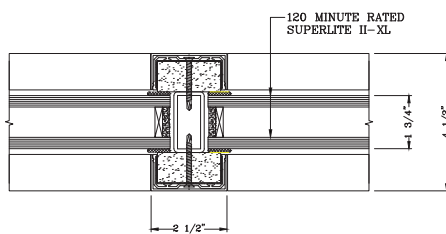
Project: CA Endowment Building in Los Angeles, CA
Architect: House and Robertson Architects
Contract Glazier: Benson Industries, Inc.
Products Used: SuperLite II-XL 120 in GPX Architectural Series

Here are two examples of how fire resistive SuperLite II-XL 120 in GPX Architectural Series Framing enhances interior spaces with elegant transparency during normal use, while protecting building occupants from the danger of radiant heat and provided safe egress during a fire.

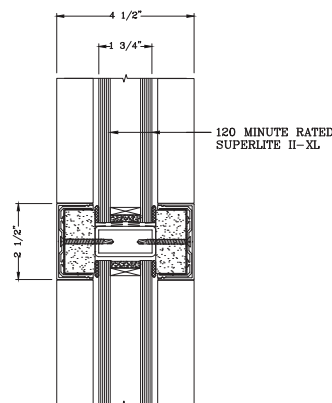
3-Part Specifications available at www.safti.com/specifications

TYPICAL DETAILS *More details available at www.safti.com/details*

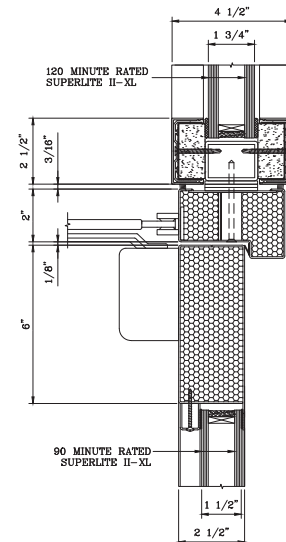
SuperLite II-XL 120 in GPX Architectural Series Framing and SuperLite II-XL 90 in GPX Builders Series Temperature Rise Door



VERTICAL MULLION DETAIL



HORIZONTAL MULLION DETAIL



DOOR TOP RAIL DETAIL

Starphire Ultra-Clear is a registered trademark owned by Vitro. The information provided herein is for general reference only. Please visit www.safti.com for the most updated information. © SAFTI FIRST April 2020

www.safti.com

SAFTI FIRST
SAFETY AND FIRE TECHNOLOGY INC.

888.653.3333