

SuperLite II-XL 60

60 Minute
Fire Resistive Glazing

PRODUCT ADVANTAGES



- ▶ Maximum fire and impact safety with hose stream and full radiant heat protection.
- ▶ Largest tested and approved sizes up to 4,952 in.² (3.19 m²) for door applications in standard 1-3/8 in. (35 mm) profile.
- ▶ Fully tested, approved and listed for temperature rise doors, openings and wall applications.
- ▶ Tint-free and optically clear. Perfect for property line requirements.
- ▶ Available in custom architectural make-ups, such as laminated glass and energy-saving insulated units.
- ▶ Can be customized to protect against forced entry, bullets, blast, hurricane and more.
- ▶ 5 year manufacturer's warranty.
- ▶ USA manufactured for fast lead times and competitive pricing.



Now available with *Starphire Ultra-Clear*® glass by Vitro

Large Sizes for Doors, Sidelites, Windows, Transoms and Walls

Fire Rating	Max. CV Area	Max. CV Width	Max. CV Height	Stops
All 60 minute applications	4,952 in. ² (3.19 m ²)	124 in. (3.15 m)	124 in. (3.15 m)	5/8 in. (16 mm)

1 in. stops recommended (25 mm)

UL AND INTERTEK TESTED AND CERTIFIED



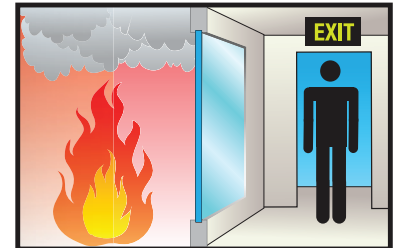
SuperLite II-XL is listed and labeled by Intertek and Underwriters Laboratories, nationally recognized testing laboratories approved by OSHA.

APPROVALS

UL 9, UL 10B, UL 10C, UL 263, NFPA 80, NFPA 251, NFPA 252, NFPA 257, ASTM E119, ASTM E152, ASTM E163, ASTM E2074, ASTM E2010-01, CPSC 16 CFR 1201 Cat. II, ANSI Z97.1, ULC CAN4-S101, ULC CAN4-S104, ULC CAN4-S106, NFRC 100, NFRC 200, NFRC 500, ASTM C1629/C1629M, ASTM E695, ASTM D4977.

FIRE RESISTIVE

Contains smoke, flames and blocks the passage of radiant heat.



SPECIFICATIONS

Thickness: 1-3/8 in. (35 mm);
2-1/8 in. (54 mm) when insulated with Low-E

Weight: 14 lbs./sq.ft. (69 kg/m²)
in 1-3/8 in. (35 mm) profile

Fire Rating: 60 minute with hose stream
Meets ASTM E119 and UL 263

Impact Safety Rating:
CPSC 16 CFR 1201 Cat. I and II & ANSI Z97.1

Hard Body Impact Classification:
ASTM C1629/C1629M Level 3

Soft Body Impact Classification:
ASTM E695 Level 3

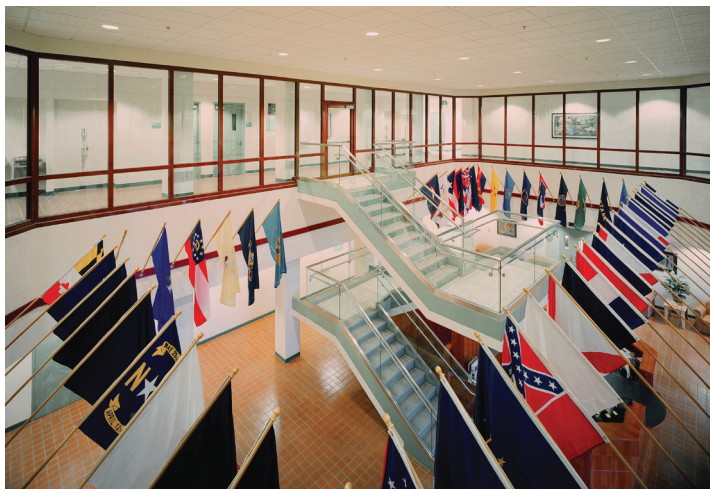
Surface Abrasion Resistance:
ASTM D4977 Level 3



Made in the USA

SuperLite II-XL 60

60 Minute
Fire Resistive Glazing



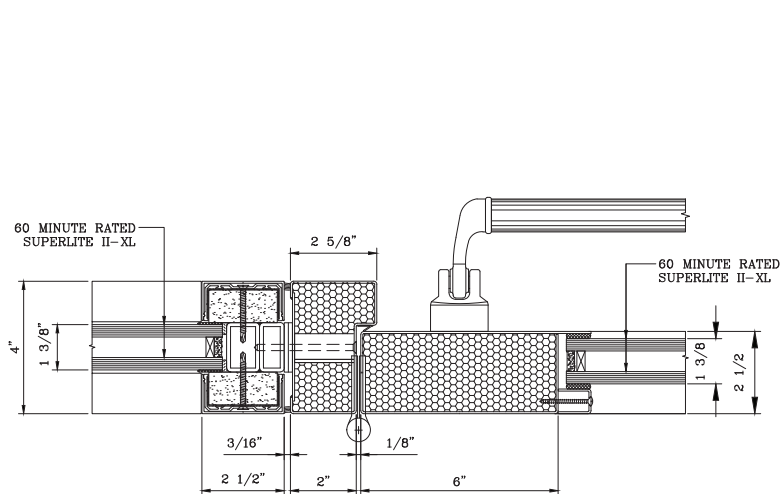
SuperLite II-XL 60 and GPX Architectural Series Framing were used to create a transparent wall system that seamlessly combines vision and light with maximum fire protection. This fire rated system also provides smooth, angular transitions along the corners to achieve the designer's intent to have a beautiful viewing area that highlights the building's focal point.

Project: Fort Frum Battle Simulation Center in Fort Drum, NY
Architect: US Army District Corps of Engineers
Contract Glazier: Northern Glass Company
Products Used: SuperLite II-XL 60 in GPX Architectural Series with Wood Veneer Finish

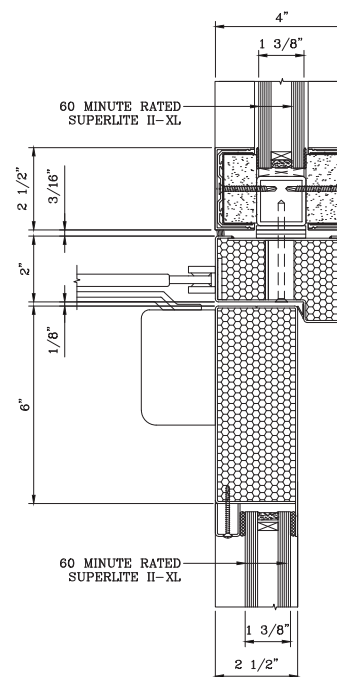
3-Part Specifications available at www.safti.com/specifications

TYPICAL DETAILS *More details available at www.safti.com/details*

SuperLite II-XL 60 in GPX Architectural Series Sidelite/Transom and SuperLite II-XL 60 in GPX Builders Series Temperature Rise Door



DOOR JAMB AT HINGE DETAIL



DOOR TOP RAIL DETAIL

Starphire Ultra-Clear is a registered trademark owned by Vitro. The information provided herein is for general reference only. Please visit www.safti.com for the most updated information. © SAFTI FIRST April 2020

www.safti.com

SAFTI**FIRST**
SAFETY AND FIRE TECHNOLOGY INC.

888.653.3333