

### PRODUCT ADVANTAGES



- ▶ **Maximum fire and impact safety with hose stream and full radiant heat protection.**
- ▶ Largest tested and approved sizes up to 4,876 in.<sup>2</sup> (3.15 m<sup>2</sup>) in standard 1-1/2 in. (38 mm) profile.
- ▶ Tint-free and optically clear. Perfect for property line requirements.
- ▶ Acoustical value of 44 STC.
- ▶ Available in custom architectural make-ups, such as laminated glass and energy-saving insulated units with NFRC certifications when used with GPX Framing.
- ▶ 5 year manufacturer's warranty.
- ▶ USA manufactured for fast lead times and competitive pricing.



Now available with Starphire® Ultra-Clear Glass by PPG

#### Largest Sizes for Doors and Exterior Windows

Fire Rating	Max. CV Area	Max. CV Width	Max. CV Height	Stops
All 90 minute applications	4,876 in. <sup>2</sup> (3.15 m <sup>2</sup> )	124 in. (3.15 m)	124 in. (3.15 m)	5/8 in. (16 mm)

1 in. stops recommended (25 mm)

### UL AND INTERTEK/WHI TESTED AND CERTIFIED



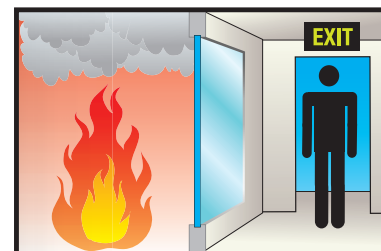
SuperLite II-XL is listed and labeled by Intertek/Warnock-Hersey Inc. and Underwriters Laboratories, nationally recognized testing laboratories approved by OSHA.

### APPROVALS

UL 9, UL 10B, UL 10C, UL 263, NFPA 80, NFPA 251, NFPA 252, NFPA 257, ASTM E119, ASTM E152, ASTM E163, ASTM E2074, ASTM E2010-01, CPSC 16 CFR 1201 Cat. II, ULC CAN4-S101, ULC CAN4-S104, ULC CAN4-S106, NFRC 100, NFRC 200, NFRC 500.

### FIRE RESISTIVE

Contains smoke, flames and blocks the passage of radiant heat.



### SPECIFICATIONS

**Thickness:** 1-1/2 in. (38 mm) standard thickness;  
2-1/4 in. (57 mm) when insulated with Low-E

**Weight:** 12 lbs./sq. ft. (59 kg/m<sup>2</sup>)  
in 1-1/2 in. (38 mm) standard profile

**Sound Transmission Rating:** STC 44  
rating in 1-1/2 in. (38 mm) standard profile

**Fire Rating:** 90 minutes with hose stream  
Meets ASTM E119 and NFPA 251

**Impact Safety Rating:**  
CPSC 16 CFR 1201 Cat. I and II

**NFRC Certifications with GPX Framing:**  
0.34 U-Factor when insulated with  
Solarban 60

0.27 SHGC when insulated with  
Solarban 60

55 Condensation Resistance when  
insulated with Solarban 60

#### 3-Part Specifications:

Available at

[www.safti.com/specifications](http://www.safti.com/specifications)

Made in the USA

# SuperLite™ II-XL 90

90 Minute  
Fire Resistive Glazing

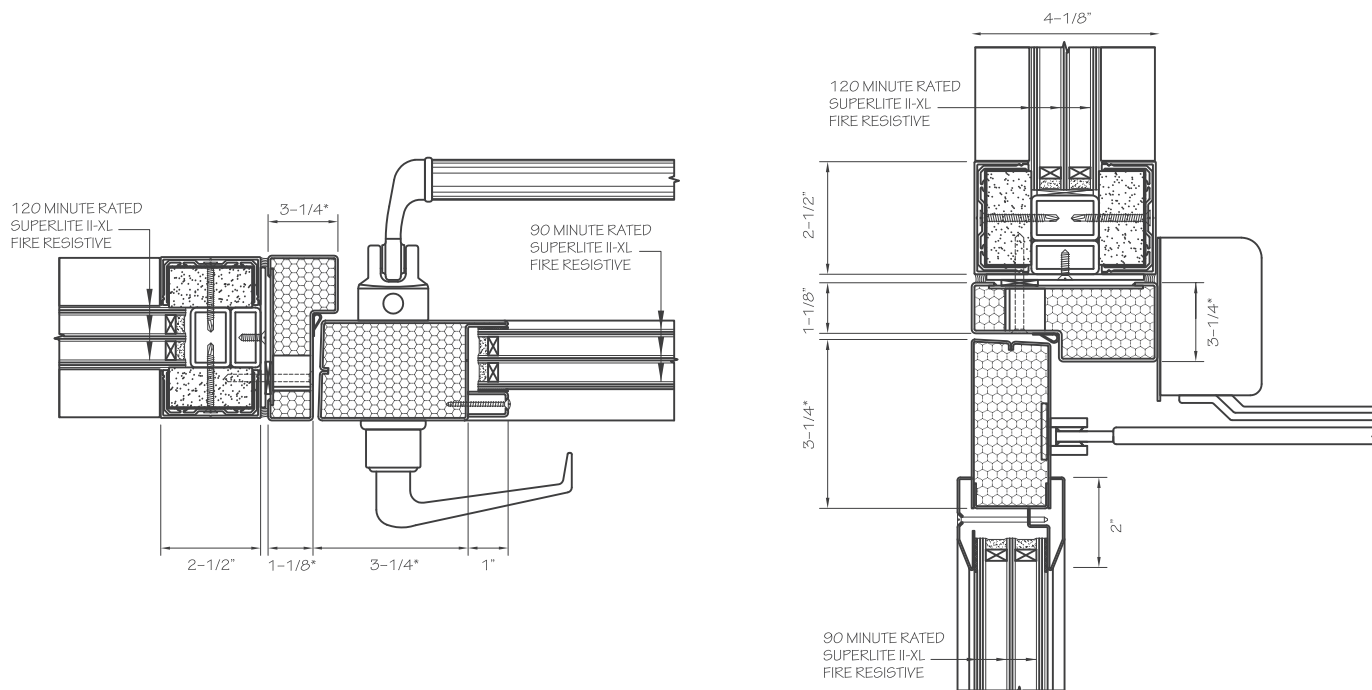


Fire resistive GPX Doors and Framing with SuperLite II-XL glazing provide transparency to this two-hour wall; enhancing the sense of openness by maximizing natural light in interior spaces, with the added benefits of safe egress and personal security.

Project: CSU Fullerton Recreation Center in Fullerton, CA  
Architect: Langdon and Wilson  
Glazier: Woodbridge Glass

## TYPICAL DETAILS *More details available at [www.safti.com/details](http://www.safti.com/details)*

SuperLite II-XL 120 in GPX Sidelite/Transom and  
SuperLite II-XL 90 in HMTR Door



\* Varies

The information provided herein is for general reference only and is subject to change without notice. Please visit [www.safti.com](http://www.safti.com) for the most updated information. © SAFTI FIRST July 2014