

### PRODUCT ADVANTAGES



FIRE RATED



THERMAL SHOCK



POSITIVE PRESSURE

- ▶ Full vision, 20 minute stile and rail aluminum door.
- ▶ Glazed with SuperLite I (20 minute clear, specialty tempered safety glazing). SuperLite I is also available with Starphire® Ultra-Clear Glass by PPG, and various glass patterns.
- ▶ Tested to NFPA 252 and UL 10C with positive pressure.
- ▶ Single and Pair Doors up to 4 ft. x 9 ft. (1.22 m x 2.74 m).
- ▶ 5 in. (127 mm) stile, 5-1/2 in. (139.7 mm) top rail, 1-3/4 in. (44.45 mm) depth, and 10 in. (254 mm) ADA-compliant bottom rail\*.
- ▶ Adjustable bottom rail to accommodate irregular floor conditions.
- ▶ Delivered factory glazed and prepped for hardware for easy installation.
- ▶ Listed and labeled by Intertek/Warnock-Hersey.
- ▶ 10 year limited warranty.
- ▶ USA manufactured for fast lead times and competitive pricing.

\*Bottom rail can be modified with AHJ approval

**DOORS:**  
with SuperLite I  
glazing

Fire Rating	Max. Door Opening (Single Door)	Max. Door Opening (Pair Door)
20 minutes	48 in. x 108 in. (1.22 m x 2.74 m)	96 in. x 108 in. (2.44 m x 2.74 m)

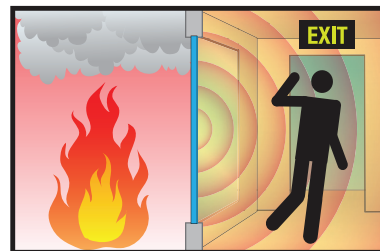
### UL AND INTERTEK/WHI TESTED AND CERTIFIED



AL20 Framing is listed and labeled by Intertek/Warnock-Hersey Inc. and Underwriters Laboratories, nationally recognized testing laboratories approved by OSHA.

### FIRE PROTECTIVE

Contains smoke and flames.  
Does not block radiant heat.



For fire resistive framing that blocks  
radiant heat see HMTR (doors only) or GPX.

### SPECIFICATIONS

**Profile width:** 5 in. (127.00 mm)

**Depth:** 1-3/4 in. (44.45 mm)

**Fire Rating:** 20 minutes

**Impact Safety Rating:**  
CPSC 16 CFR 1201 Cat. II with SuperLite I glazing

**Finish:** Painted or Anodized

**Warranty:** 10 year limited warranty

#### 3-Part Specifications:

Available at  
[www.safti.com/specifications](http://www.safti.com/specifications)

### APPROVALS

ASTM E152, ASTM E2074, NFPA 80, NFPA 252,  
UL 10B, UL 10C, ULC CAN4-S104, CPSC 16 CFR  
1201 Cat. II.



Made in the USA

# GPX ARCHITECTURAL S E R I E S

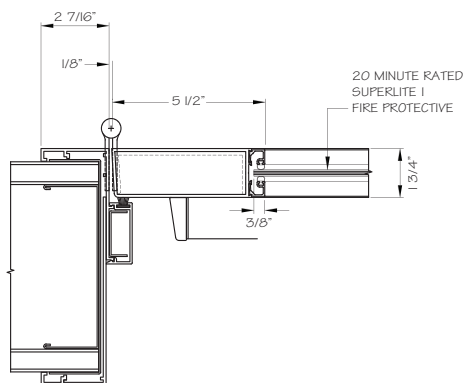
**20 Minute Fire Protective  
Aluminum Door**



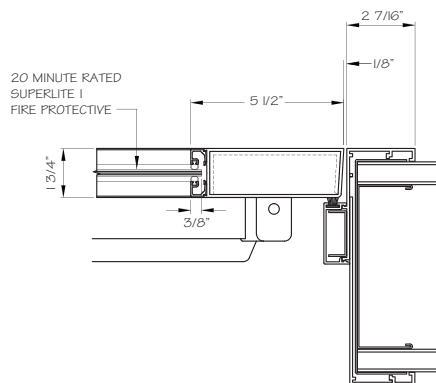
The GPX Architectural Series 20 minute fire protective aluminum door is a full vision, stile and rail door that incorporates SuperLite I clear specialty tempered glazing. SuperLite I with PPG Starphire® Ultra-Clear Glass and SuperLite pattern glass are also available glazing options. Fully listed and labeled by Intertek-Warnock Hersey, this product meets NFPA 252, UL 10C for positive pressure, and CPSC Cat. II impact safety (with SuperLite I glazing).

## TYPICAL DETAILS *More details available at [www.safti.com/details](http://www.safti.com/details)*

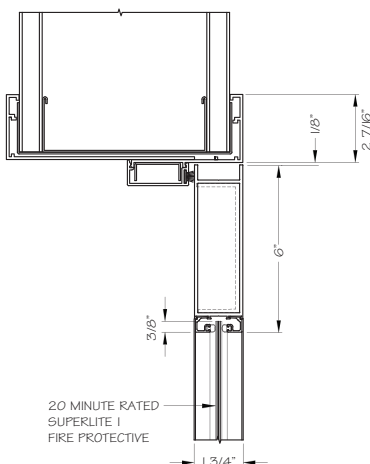
### Door Jamb



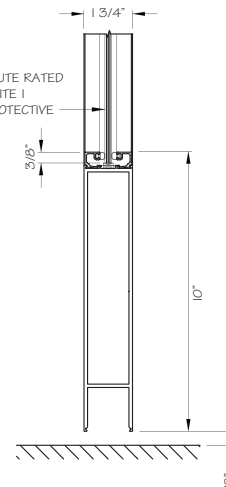
### Door Jamb



### Door Top Rail



### Door Bottom Rail



The information provided herein is for general reference only. Please visit [www.safti.com](http://www.safti.com) for the most updated information. © SAFTI FIRST August 2015

**www.safti.com**

**SAFTI FIRST**  
S I N C E 1 9 8 1

**888.653.3333**