

# SuperLite™ II-XLB

60-120 Minute Fire Resistive Glazing for Oversized and Butt-Glazed Applications

## PRODUCT ADVANTAGES



- ▶ Largest tested and approved clear view area of 7,980 sq. in. of any fire resistive glazing product up to 2 hours.
- ▶ Tint-free, optically clear fire resistive glazing meeting ASTM E-119, ANSI/UL 263 and CAN/ULC S101 with hose stream.
- ▶ Butt-glazed option available.
- ▶ Can be easily combined with GPX Architectural Series Framing for a complete and code compliant fire resistive assembly.
- ▶ Meets CPSC Cat. II impact safety, the federal maximum safety standard.
- ▶ Available in custom architectural, decorative and energy-saving make-ups.
- ▶ High STC ratings.
- ▶ 5 year manufacturer's warranty.
- ▶ USA manufactured for fast lead times and competitive pricing.
- ▶ Intertek listed and labeled.



Now available with Starphire® Ultra-Clear Glass by PPG and other decorative and custom glass make-ups.

### Largest Sizes:

Fire Rating	Max. CV Area	Max. CV Width	Max. CV Height	Stops
SuperLite II-XLB	7,980 in. <sup>2</sup> (5.15 m <sup>2</sup> )	60 in. (1.52 m)	133 in. (3.38 m)	5/8 in. (16 mm)

1 in. stops recommended (25 mm)

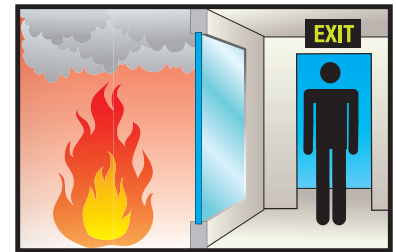


## INTERTEK TESTED AND CERTIFIED

SuperLite II-XLB is listed and labeled by Intertek, a nationally recognized testing laboratory approved by OSHA.

## FIRE RESISTIVE

Contains smoke, flames and blocks the passage of radiant heat.



## SPECIFICATIONS

**Thickness:** 2-1/2 in (63.5 mm)

**Weight:** 15 lbs./sq.ft. (73.24 kg/m<sup>2</sup>)

**Glass Make-up:** Fire resistive tempered multilaminate with intumescent interlayers.

**Fire Rating:** 60-120 minutes with hose stream. Meets ASTM E119, ANSI/UL263 & CAN/ULC S101

**Impact Safety Rating:**  
CPSC 16 CFR 1201 Cat. I and II

### 3-Part Specifications:

Available at  
[www.safti.com/specifications](http://www.safti.com/specifications)

Made in the USA

## APPROVALS

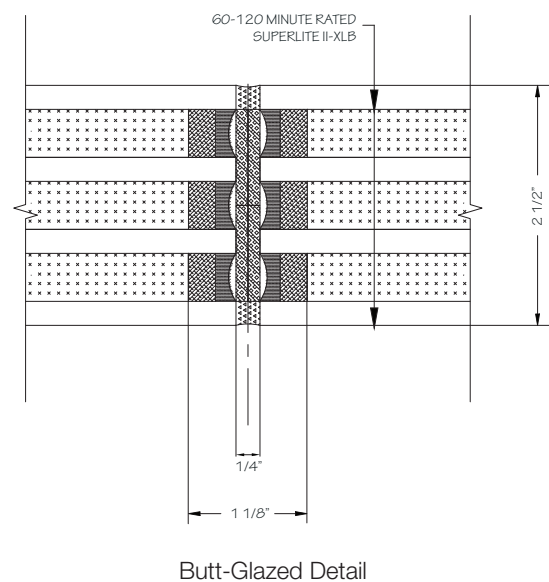
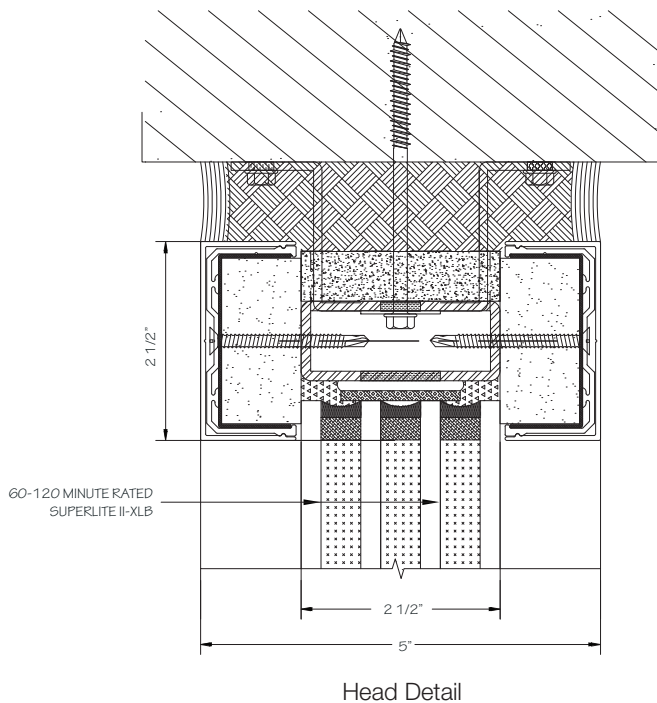
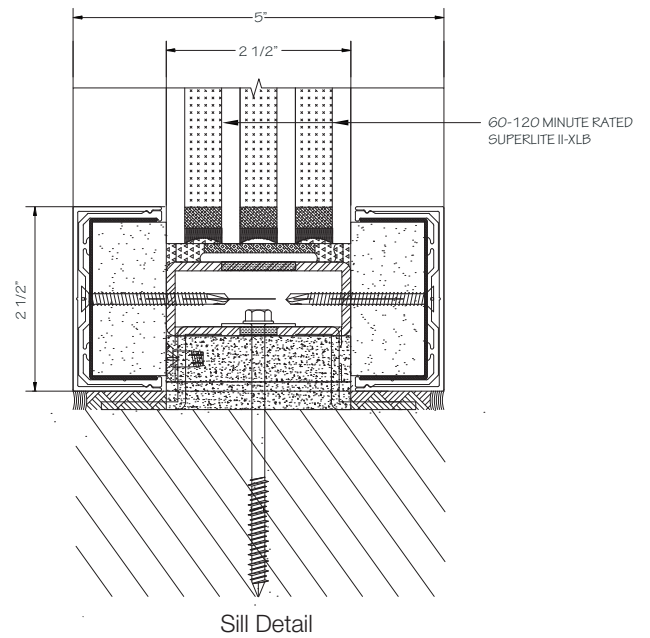
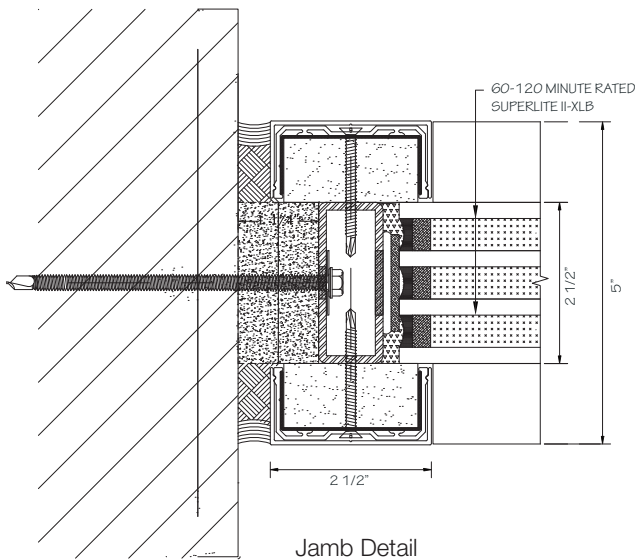
ASTM E119, ANSI/UL 263  
CAN/ULC S101  
CPSC 16 CFR 1201 Cat. II.,  
ANSI Z97.1

# SuperLite™ II-XLB

60-120 Minute Fire Resistive Glazing for Oversized and Butt-Glazed Applications

## TYPICAL DETAILS More details available at [www.safti.com/details](http://www.safti.com/details)

### SuperLite II-XLB 60-120 in GPX Architectural Series Framing



The information provided herein is for general reference only. Please visit [www.safti.com](http://www.safti.com) for the most updated information. © SAFTI FIRST April 2016