

SuperLite™ II-XLB

60-120 Minute Fire Resistive Glazing for Oversized and Butt-Glazed Applications

PRODUCT ADVANTAGES



- ▶ Largest tested and approved clear view area of 7,980 sq. in. of any fire resistive glazing product up to 2 hours.
- ▶ Tint-free, optically clear fire resistive glazing meeting ASTM E-119, ANSI/UL 263 and CAN/ULC S101 with hose stream.
- ▶ Butt-glazed option available.
- ▶ Can be easily combined with GPX Architectural Series Framing for a complete and code compliant fire resistive assembly.
- ▶ Meets CPSC Cat. II impact safety, the federal maximum safety standard.
- ▶ Available in custom architectural, decorative and energy-saving make-ups.
- ▶ High STC ratings.
- ▶ 5 year manufacturer's warranty.
- ▶ USA manufactured for fast lead times and competitive pricing.
- ▶ Intertek listed and labeled.



Now available with Starphire® Ultra-Clear Glass by PPG and other decorative and custom glass make-ups.

Largest Sizes:

Fire Rating	Max. CV Area	Max. CV Width	Max. CV Height	Stops
SuperLite II-XLB	7,980 in. ² (5.15 m ²)	60 in. (1.52 m)	133 in. (3.38 m)	5/8 in. (16 mm)

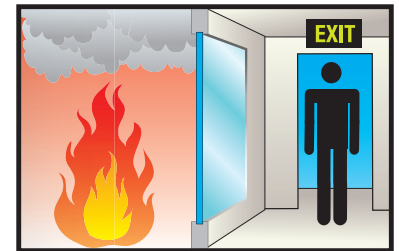


INTERTEK TESTED AND CERTIFIED

SuperLite II-XLB is listed and labeled by Intertek, a nationally recognized testing laboratory approved by OSHA.

FIRE RESISTIVE

Contains smoke, flames and blocks the passage of radiant heat.



SPECIFICATIONS

Thickness: 2-1/2 in (63.5 mm)

Weight: 15 lbs./sq.ft. (73.24 kg/m²)

Glass Make-up: Fire resistive tempered multilaminate with intumescent interlayers.

Fire Rating: 60-120 minutes with hose stream. Meets ASTM E119, ANSI/UL263 & CAN/ULC S101

Impact Safety Rating:
CPSC 16 CFR 1201 Cat. I and II

3-Part Specifications:

Available at

www.safti.com/specifications



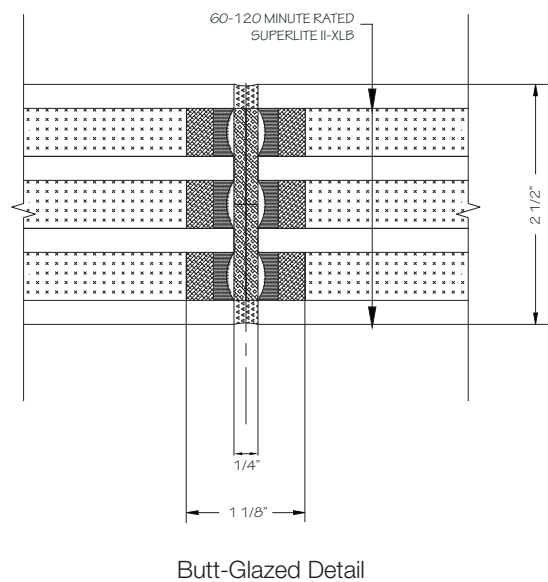
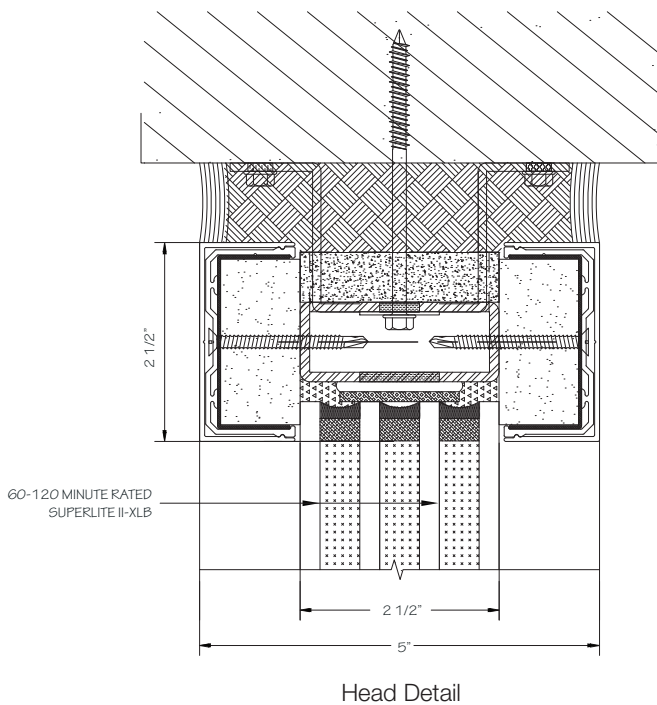
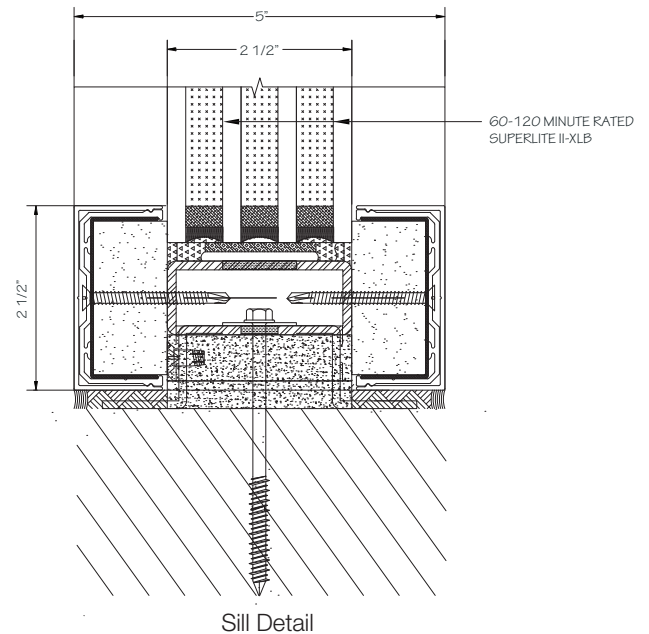
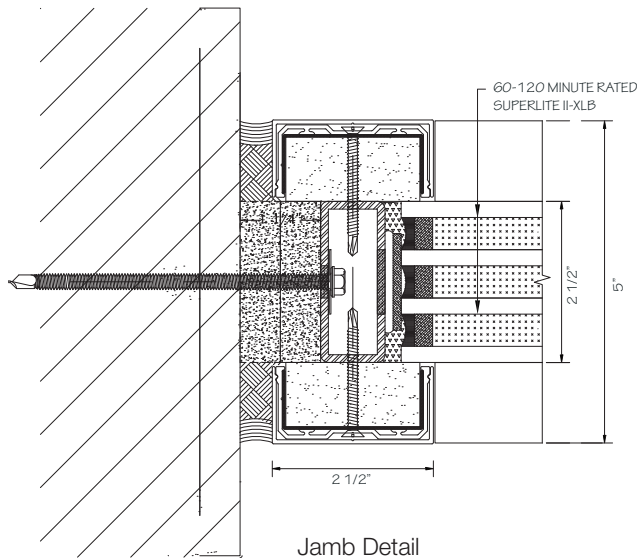
Made in the USA

APPROVALS

ASTM E119, ANSI/UL 263
CAN/ULC S101
CPSC 16 CFR 1201 Cat. II.,
ANSI Z97.1

TYPICAL DETAILS More details available at www.safti.com/details

SuperLite II-XLB 60-120 in GPX Architectural Series Framing



The information provided herein is for general reference only. Please visit www.safti.com for the most updated information. © SAFTI FIRST March 2016