

PRODUCT ADVANTAGES



- ▶ 45 to 120 minute, clear fire and ballistic rated system.
- ▶ Meets UL 9/10B/10C, NFPA 252/257 for 45 minute fire protective glazed openings, sidelites, transoms and full-vision doors.
- ▶ Meets UL 10B/10C, NFPA 252, ASTM E-110/UL 263 for 60-90 minute temperature rise full vision doors.
- ▶ Meets ASTM E-119/UL 263 for 60-120 minute fire resistive glazed walls.
- ▶ Meets UL 752 up to Level 3 for full-vision doors assemblies and UL 752 up to Level 8 for glazed walls and openings.
- ▶ Meets ASTM F1592 Table 1 Grade 1 requirements for walls, openings, sidelites and transoms.
- ▶ Available in multiple finishes including high performance fluoropolymer finishes by PPG, stainless steel or aluminum clad, clear anodized, bronze anodized, black anodized, custom paint, and more.
- ▶ Ballistic only (non-fire rated) options also available.
- ▶ Standard 5 year limited warranty.
- ▶ USA manufactured for fast lead times and competitive pricing.

MAX. SIZES FOR WALLS, OPENINGS, SIDELITES, AND TRANSOMS

Fire Rating	Max. CV Area	Max. CV Width	Max. CV Height	Stops
45-60 minutes	4,952 in. ² (3.19 m ²)	96 in. (2.44 m)	96 in. (2.44 m)	1 in. (25 mm)
90-120 minutes	4,876 in. ² (3.19 m ²)	96 in. (2.44 m)	96 in. (2.44 m)	1 in. (25 mm)

Please call **SAFTI FIRST** for custom sizes exceeding 96 in. (2.44 m) up to a maximum 124 in. (3.15 m).
 Minimum clear view between structural members is 12 in. x 12 in. for UL 752.
 Minimum clear view between structural members is 25-1/8" x 25-1/8" for ASTM F1592.

MAX. SIZES FOR DOORS

Fire Rating	Max. Door Opening (Single Door)	Max. Door Opening (Pair Door)
45-90 minutes	54 in. x 120 in. (1.37 m x 3.05 m)	108 in. x 120 in. (2.74 m x 3.05 m)

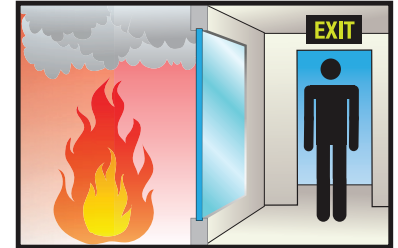
INTERTEK TESTED AND CERTIFIED



GPX[®] Ballistic Series is listed and labeled by Intertek, a nationally recognized testing laboratory approved by OSHA.

FIRE RESISTIVE

Contains smoke and flames, and blocks the passage of radiant heat.



SPECIFICATIONS

Fire Rating: 45-120 minutes with hose stream. Meets NFPA 251/252/257, UL 9/10B/10C/263, ASTM E-119, ULC CAN4-S101/S104/S106

Ballistic Rating: Meets UL 752 up to Level 3 for full-vision door assemblies and UL 752 up to Level 8 for glazed walls and openings.

Detention Rating: Meets ASTM F1592 Table 1 Grade 1 requirements for walls, openings, sidelites and transoms.

Impact Safety Rating: Meets CPSC Cat. II

APPROVALS

NFPA 251, NFPA 252, NFPA 257, UL 9, UL 10B, UL 10C, UL 263, ASTM E-119, CPSC 16 CFR 1201 Cat. II, ANSI Z97.1, UL 752, ASTM F1592, ULC CAN4-S101, ULC CAN4-S104, ULC CAN4-S106

3-part Specifications:

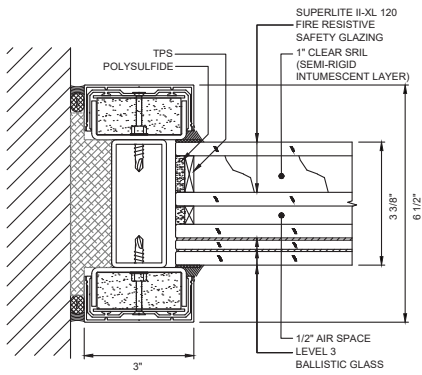
Available at

www.safti.com/specifications

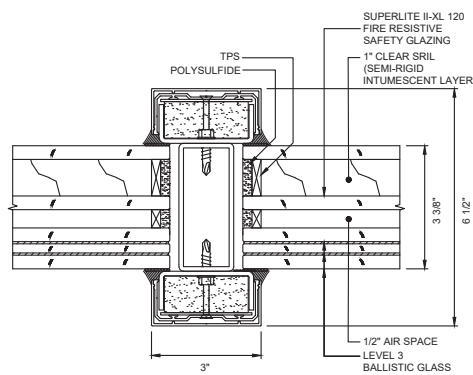


Made in the USA

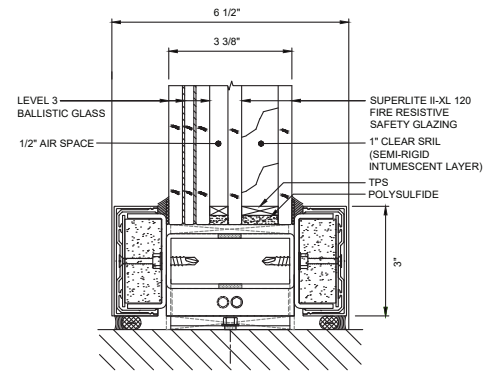
TYPICAL DETAILS More details available at www.safti.com/details



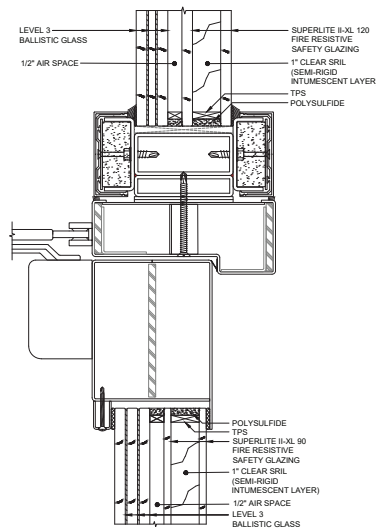
JAMB DETAIL



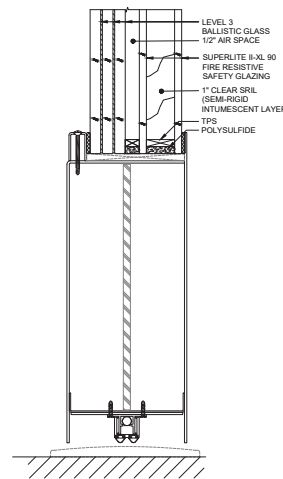
VERTICAL MULLION DETAIL



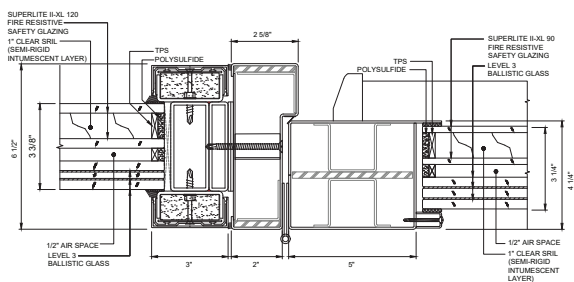
SILL DETAIL



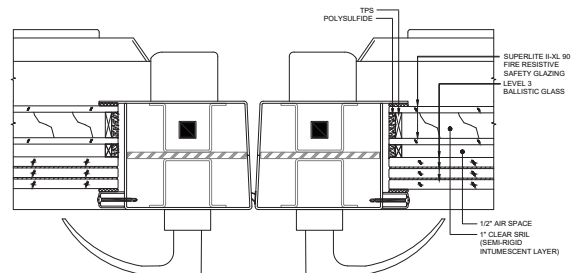
DOOR TOP RAIL DETAIL



DOOR BOTTOM RAIL DETAIL



DOOR JAMB AT HINGE DETAIL



DOOR MEETING STILES

Details not to scale.

The information provided herein is for reference only and is subject to change without notice. Please visit www.safti.com for the most up to date information.

© SAFTI FIRST[®] October 2021