

SuperLite® I-XL IGU

20-45 Minute Fire Protective Glazing
Bi-Directional Without Hose Stream

PRODUCT ADVANTAGES



- ▶ Patented specialty tempered glazing tested without hose stream, that provides low cost bi-directional partial radiant heat protection and insulation not available with ceramics.
- ▶ Accepted by the GSA and AHJ's across the country as a safe and value added alternative to traditional unsafe wired glass and expensive ceramics.
- ▶ Meets the highest human impact safety requirements.
- ▶ Approved for 20 minute applications without limitations.
- ▶ Regularly specified for use in exterior applications and perfect for property line requirements.
- ▶ Acoustical value of 33 STC and available in specialty architectural make-ups.
- ▶ Standard 5 year limited warranty.
- ▶ USA manufactured for fast delivery and competitive pricing.

Fire Rating	Application	Max. CV Area	Max. CV Width	Max. CV Height	Stops
20 minutes	Wood or Steel Doors	3,341 in. ² (2.16 m ²)	35-1/8 in. (0.89 m)	95-1/8 in. (2.42 m)	5/8 in. (16 mm)
20 minutes	Steel Sidelites, Windows and Transoms	3,522 in. ² (2.27 m ²)	48 in. (1.22 m)	96 in. (2.44 m)	5/8 in. (16 mm)
45 minutes*	Wood or Steel Doors	3,341 in. ² (2.16 m ²)	35-1/8 in. (0.89 m)	95-1/8 in. (2.42 m)	5/8 in. (16 mm)
45 minutes*	Steel Sidelites, Windows and Transoms	3,522 in. ² (2.27 m ²)	48 in. (1.22 m)	96 in. (2.44 m)	5/8 in. (16 mm)

*Please see details for limitations

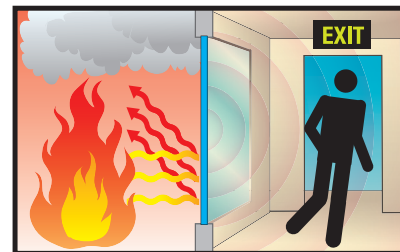
INTERTEK TESTED AND CERTIFIED



SuperLite® I-XL IGU is listed and labeled by Intertek and Underwriters Laboratories, nationally recognized testing laboratories approved by OSHA. Requires AHJ approval for 45 minute applications because it is tested without hose stream. Please visit www.safti.com/AHJ for more information.

FIRE PROTECTIVE

Provides partial radiant heat protection.
Contains smoke and flames.



Reflects radiant heat back to the fire source, allowing safe egress in corridors.

For fire resistive glazing that blocks radiant heat see SuperLite® II-XL.

SPECIFICATIONS

Thickness: 1 in. (25 mm) standard
3/4 in. (19 mm) also available

Weight: 6.0 lbs./sq.ft. (29 kg/m²)

Sound Transmission Rating:
STC 33

Fire Rating: 20-45 minutes without hose stream

Impact Safety Rating:
CPSC 16 CFR 1201 Cat. I and II

3-Part Specifications:
Available at
www.safti.com/specifications

APPROVALS

UL 9, UL 10B, UL 10C, NFPA 80,
NFPA 252, NFPA 257, ASTM E152,
ASTM E163, ASTM E2074,
ASTM E2010-01,
CPSC 16 CFR 1201 Cat. II.,
ANSI Z97.1

U.S. Pat. No. 5,910,620



Contract Holder
Contract 47QSWA20D0022



Made in the USA

www.safti.com

SAFTI FIRST
SAFETY AND FIRE TECHNOLOGY INC.

888.653.3333

SuperLite® I-XL IGU

20-45 Minute Fire Protective Glazing
Bi-Directional Without Hose Stream



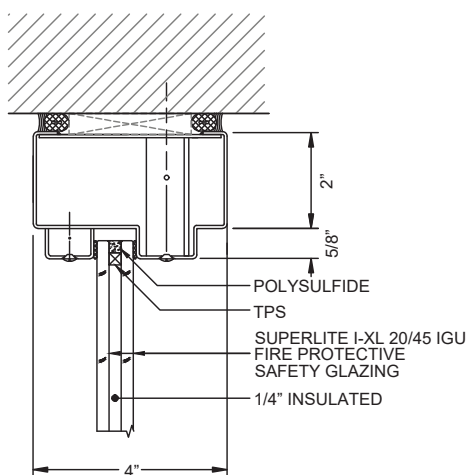
The approved use of SuperLite® I-XL IGU on this project is another example of how the General Services Administration (GSA) and building officials across the country continue to approve SuperLite® I-XL and SuperLite® I-XL IGU as alternate materials in 45 minute applications to take advantage of the additional radiant heat protection and cost savings these products provide.

Please request a copy of our SuperLite® I-XL Technical Bulletin to learn how your next project can benefit as well.

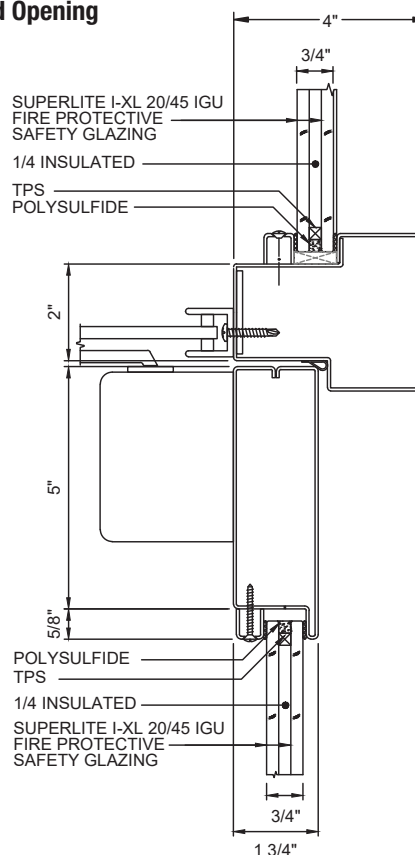
Project: Federal Post Office and Courthouse in Little Rock, AR
Architect: Witsell Evans and Rasco and RTKL and Associates (A Joint Venture)
AHJ: General Services Administration
Contract Glazier: BHN Corporation

TYPICAL DETAILS *More details available at www.safti.com/details*

SuperLite® I-XL IGU in GPX® Builders Series Fire Protective Door, Transom and Opening



HEAD DETAIL



DOOR TOP RAIL DETAIL

Details not to scale.

* AHJ approval required for 45 minute applications because it is tested without hose stream. Fire protective glazing is limited to 100 sq. in. in temperature rise doors and up to max. size tested in non-temperature rise doors. Fire protective glazing is limited to 25% of the wall area and cannot be used in applications that require ASTM E119 or NFPA 251.

The information provided herein is for general reference only and is subject to change without notice. Please visit www.safti.com for the most up to date information.

© SAFTI FIRST® October 2021