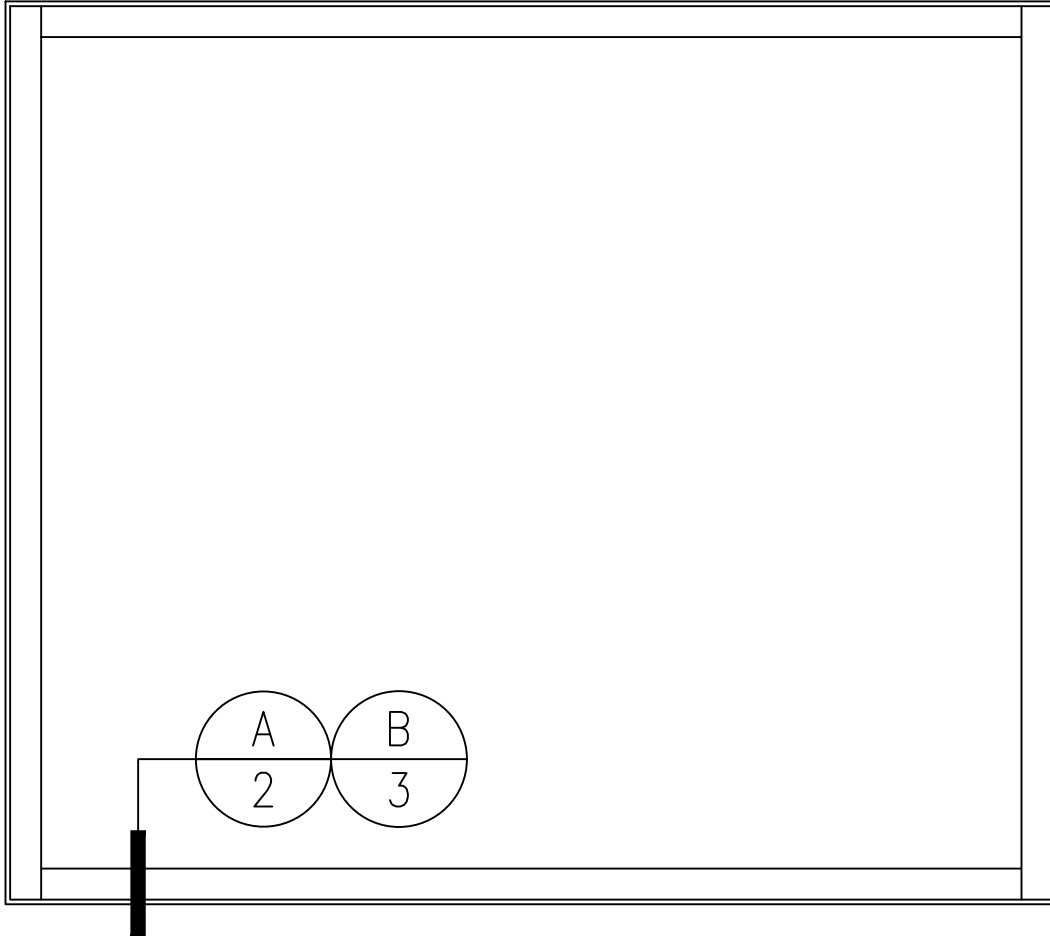


GPX EZ FRAME

60 MINUTE FIRE RESISTIVE WALL

GPX EZ FRAME WITH SUPERLITE II-XL 60 OR SUPERLITE II-XLB 60

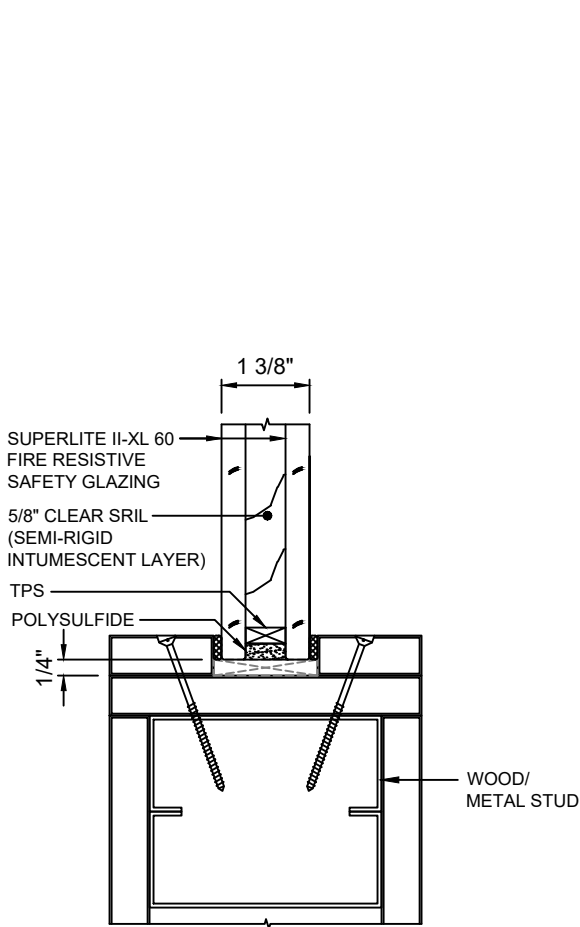


GLASS TYPE

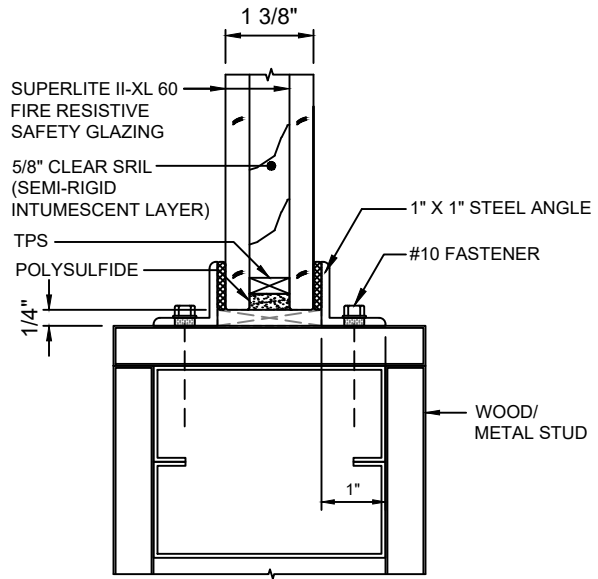
- (A) SUPERLITE II-XL 60
MAX. CV AREA PER INDIVIDUAL LITE: **4,952 SQ. IN.**
MAX. CV HEIGHT OR WIDTH PER INDIVIDUAL LITE: **124 IN.**
- (B) SUPERLITE II-XLB 60
MAX. CV AREA PER INDIVIDUAL LITE: **10,000 SQ. IN.**
MAX. CV HEIGHT OR WIDTH PER INDIVIDUAL LITE: **125 IN.**

GPX EZ FRAME

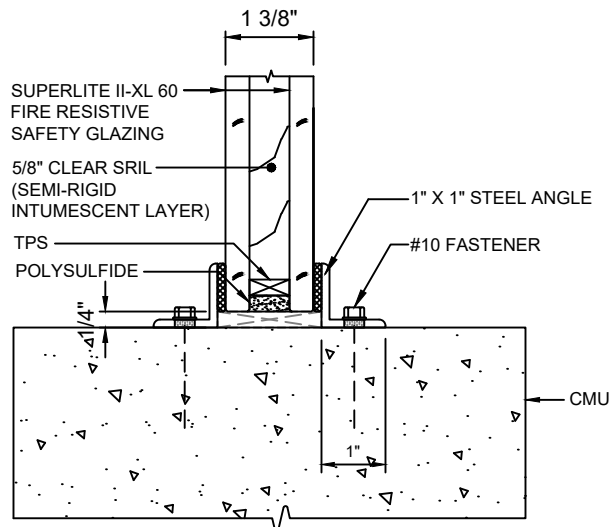
60 MINUTE FIRE RESISTIVE WALL



A
2.1 SILL DETAIL ON WOOD OR METAL STUD
WITH SUPERLITE II-XL 60



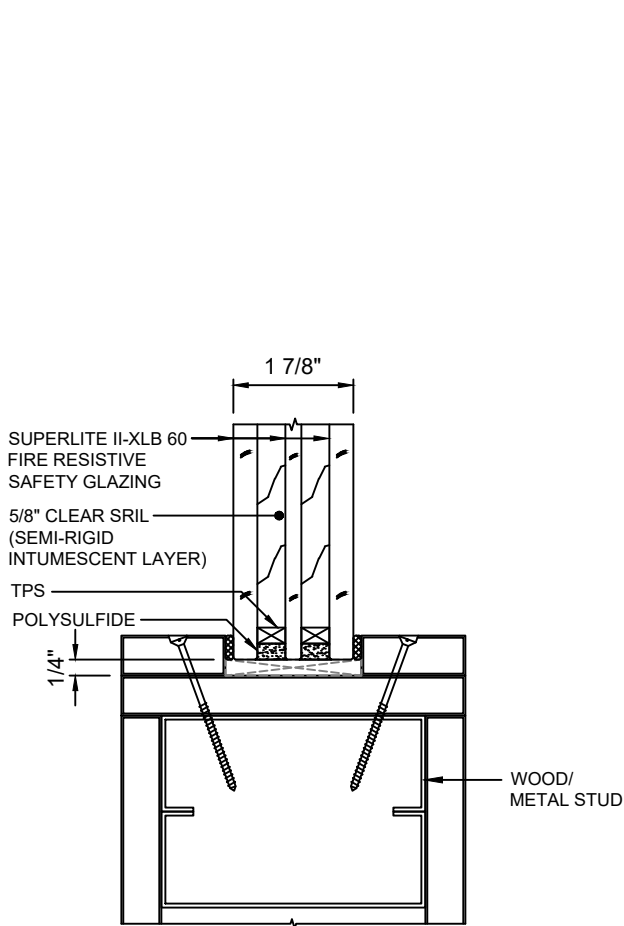
A
2.2 SILL DETAIL WITH STEEL ANGLES
ON WOOD OR METAL STUD
WITH SUPERLITE II-XL 60



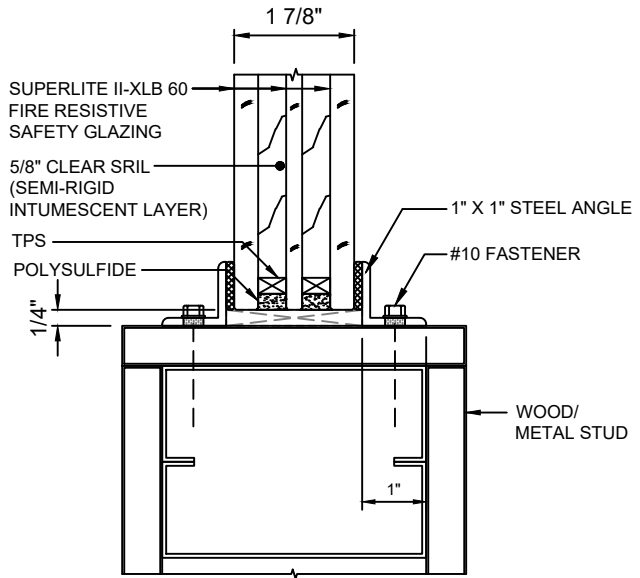
A
2.3 SILL DETAIL WITH STEEL ANGLES
WITH SUPERLITE II-XL 60

GPX EZ FRAME

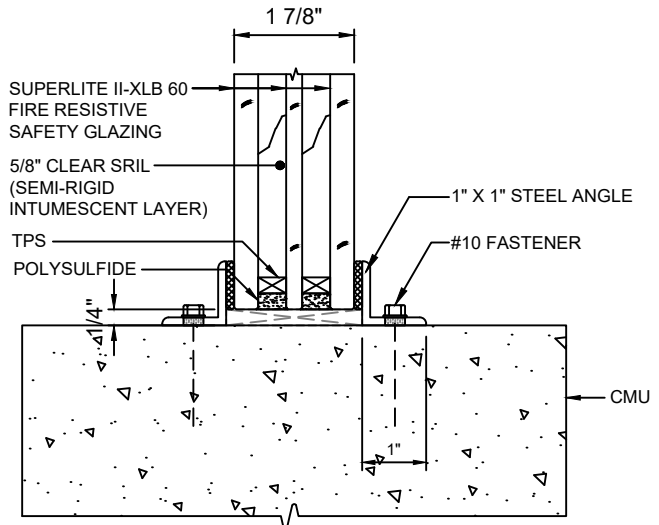
60 MINUTE FIRE RESISTIVE WALL



B
3.1 SILL DETAIL ON WOOD OR METAL STUD WITH **SUPERLITE II-XLB 60**



B
3.2 SILL DETAIL WITH STEEL ANGLES ON WOOD OR METAL STUD WITH **SUPERLITE II-XLB 60**



B
3.3 SILL DETAIL WITH STEEL ANGLES WITH **SUPERLITE II-XLB 60**