

# SuperClear® 45-HS-LI

Patented

**45 Minute  
Fire Protective Glazing**

## PRODUCT ADVANTAGES



- ▶ The clearest, most economical fire and safety rated glazing meeting all the requirements for 45 minute doors, sidelites, transoms and openings in large sizes.
- ▶ Meets the required hose stream test.
- ▶ Meets the CPSC Cat. II impact safety test without the need of films or laminates.
- ▶ Non-wired and tint-free clear glazing using low-iron glass providing the highest visual clarity.
- ▶ Insulated, obscure, decorative or filmed make-ups available.
- ▶ Can be used in interior and exterior applications.
- ▶ USA manufactured for fast delivery and competitive pricing.
- ▶ Approved glazing component in the NFRC CMAST database.
- ▶ Lifetime manufacturer's warranty.

Fire Rating	Application	Max. CV Area	Max. CV Width	Max. CV Height	Stops
45 minutes	Doors	3,288 in. <sup>2</sup> (2.12 m <sup>2</sup> )	33 in. (0.84 m)	99-5/8 in. (2.53 m)	5/8 in. (16 mm)
45 minutes	Windows/ Sidelites/ Transoms	3,880 in. <sup>2</sup> (2.50 m <sup>2</sup> )	96 in. (2.44 m)	96 in. (2.44 m)	5/8 in. (16 mm)

## TESTED AND CERTIFIED TO UL 9, 10B AND 10C

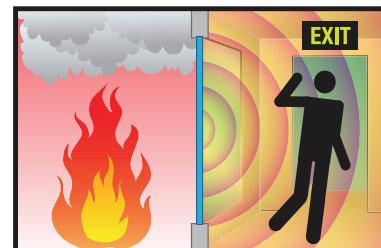


SuperClear® 45-HS-LI is listed and labeled by Intertek and Underwriters Laboratories, nationally recognized testing laboratories approved by OSHA.



## FIRE PROTECTIVE

**Contains smoke and flames.  
Does not block radiant heat.**



For fire resistive glazing that blocks radiant heat see SuperLite® II-XL.

## SPECIFICATIONS

**Thickness:** 3/4 in. (19 mm)

**Weight:** 9.0 lbs./sq.ft. (44 kg/m<sup>2</sup>)

**Sound Transmission Rating:**  
STC 37/ OITC 35 in 3/4 in. (19 mm)  
standard profile in standard hollow metal frames.

**Fire Rating:** 45 minutes  
with hose stream

**Visible Light Transmittance:** 90

**Impact Safety Rating:**  
CPSC 16 CFR 1201 Cat. I and II,  
ANSI Z97.1 Class A and B,  
CAN/CGSB 12.1 Class A and B

### 3-Part Specifications:

Available at

**[www.safti.com/specifications](http://www.safti.com/specifications)**

US Pat. No. 11,479,504 with  
additional patents pending.

## APPROVALS

UL 9, UL 10B, UL 10C, NFPA 80,  
NFPA 252, NFPA 257, ULC CAN4-S104,  
ULC CAN4-S106, CPSC 16 CFR 1201  
Cat. I & II., ANSI Z97.1, CAN/CGSB 12.1

**GSA** Contract Holder  
Contract 47QSWA20D0022

**Made in the USA**

**[www.safti.com](http://www.safti.com)**

**SAFTIFIRST**  
SAFETY AND FIRE TECHNOLOGY INC.

**888.653.3333**

# SuperClear® 45-HS-LI

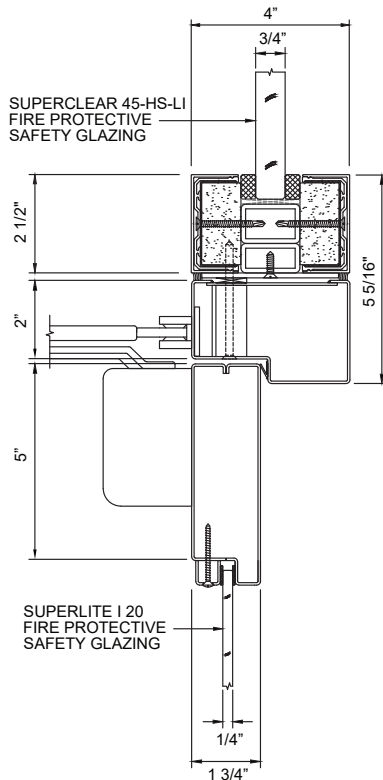
Patented

45 Minute  
Fire Protective Glazing

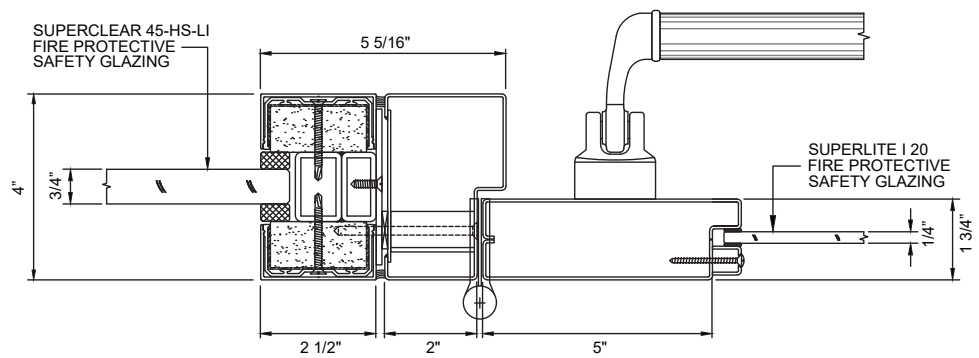
## TYPICAL DETAILS

More details available at [www.safti.com/details](http://www.safti.com/details)

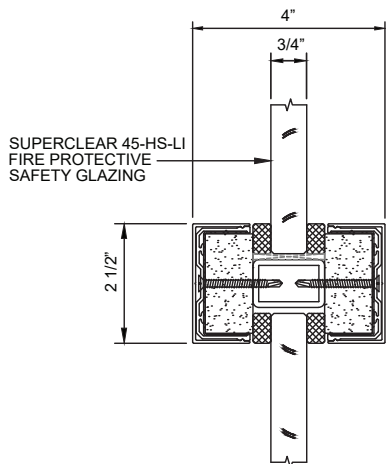
SuperClear® 45-HS-LI in GPX® Builders Series Fire Protective Door and GPX® Architectural Series Sidelite/Transom/Opening



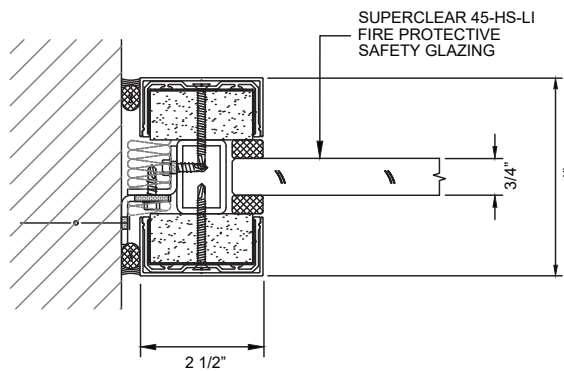
DOOR TOP RAIL DETAIL



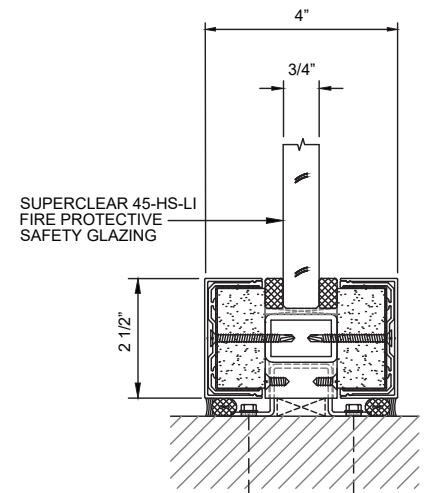
DOOR JAMB AT HINGE DETAIL



HORIZONTAL MULLION DETAIL



JAMB DETAIL



SILL DETAIL

Details not to scale.

The information provided herein is for reference only and is subject to change without notice. Please visit [www.safti.com](http://www.safti.com) for the most up to date information.

© SAFTI FIRST® January 2023