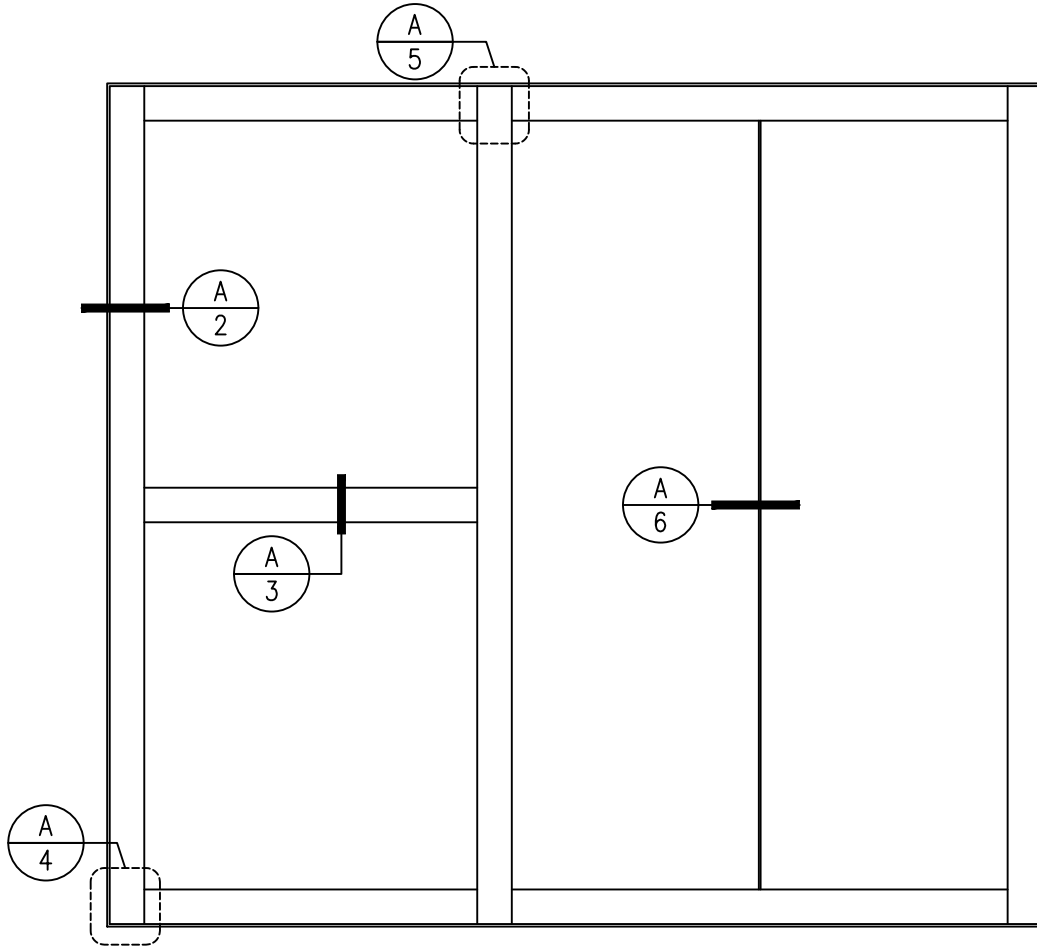


# GPX FIRE FLOOR

## 120 MINUTE *FIRE RESISTIVE* FLOOR SYSTEM

GPX FIREFLOOR WITH SUPERLITE II-XLF 120



### GLASS TYPE

(A) SUPERLITE II-XLF 120  
MAX. INDIVIDUAL PANEL AREA: 7,179.9 SQ. IN.

### \*\*Span Table and Loading Criteria for GPX Fire Floor- 120 Minute

SPAN	3 ft. 0 in.	6 ft. 0 in.	10 ft. 0 in.	15 ft. 0 in.	20 ft. 0 in.	40 ft. 0 in.
I-Beam Shape	M3x2.9	M8x6.2	M10x8	M12.5x12.4	W14x22	W24x55
Flange Width	2.25 in.	2.28 in.	2.69 in.	3.75 in.	5 in.	7.01 in.
Flange Thickness	0.13 in.	0.177 in.	0.182 in.	0.228 in.	0.335 in.	0.505 in.
Overall Depth	3 in.	8 in.	10 in.	12.5 in.	13.7 in.	23.6 in.
Web Thickness	0.09 in.	0.129 in.	0.141 in.	0.155 in.	0.23 in.	0.395 in.

Loading Criteria: 45 lbs./sq.ft dead load • 100 lbs./sq.ft live load  
For spans greater than 40 ft. please contact SAFTI FIRST.

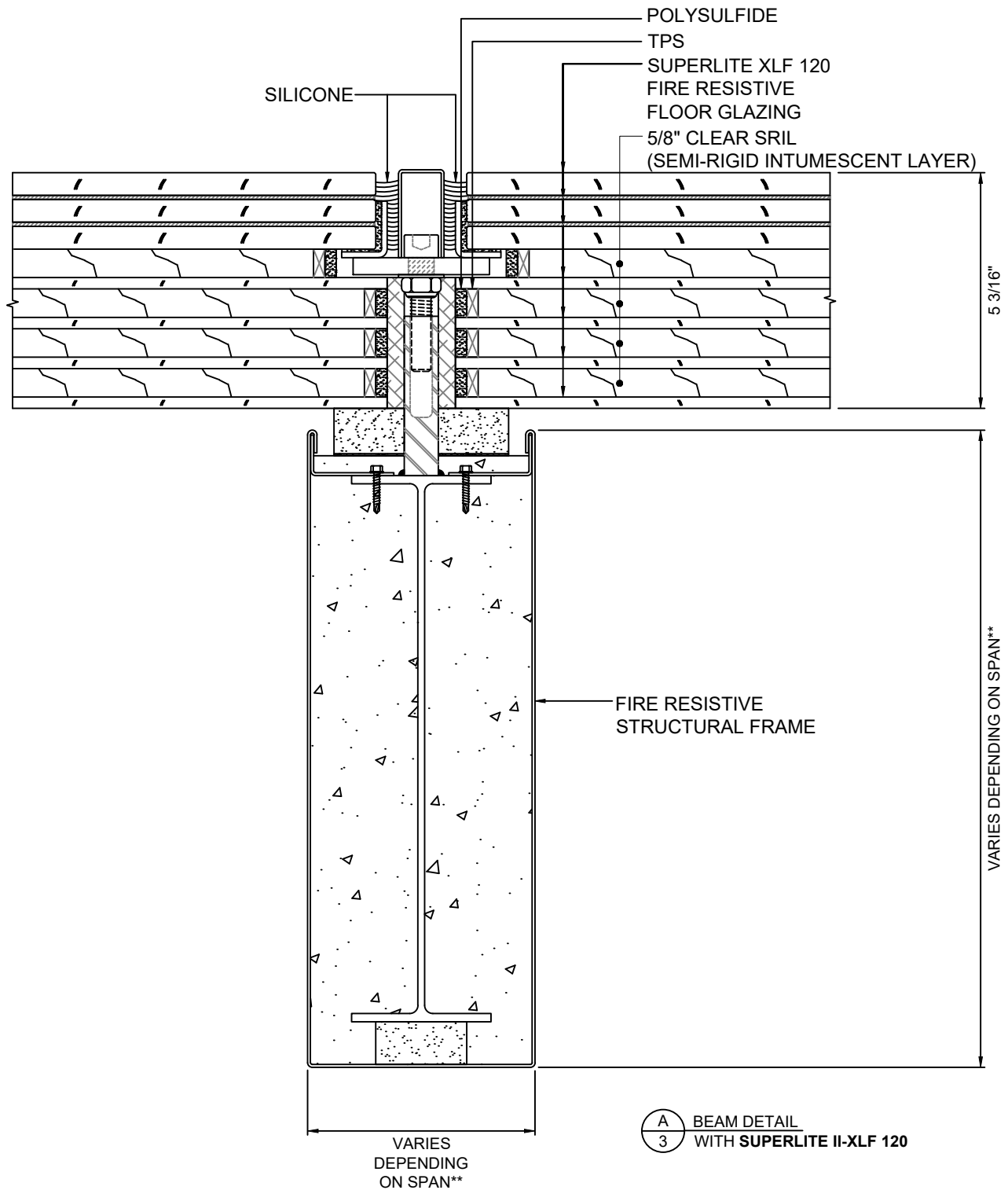
# GPX FIRE FLOOR

## 120 MINUTE *FIRE RESISTIVE* FLOOR SYSTEM



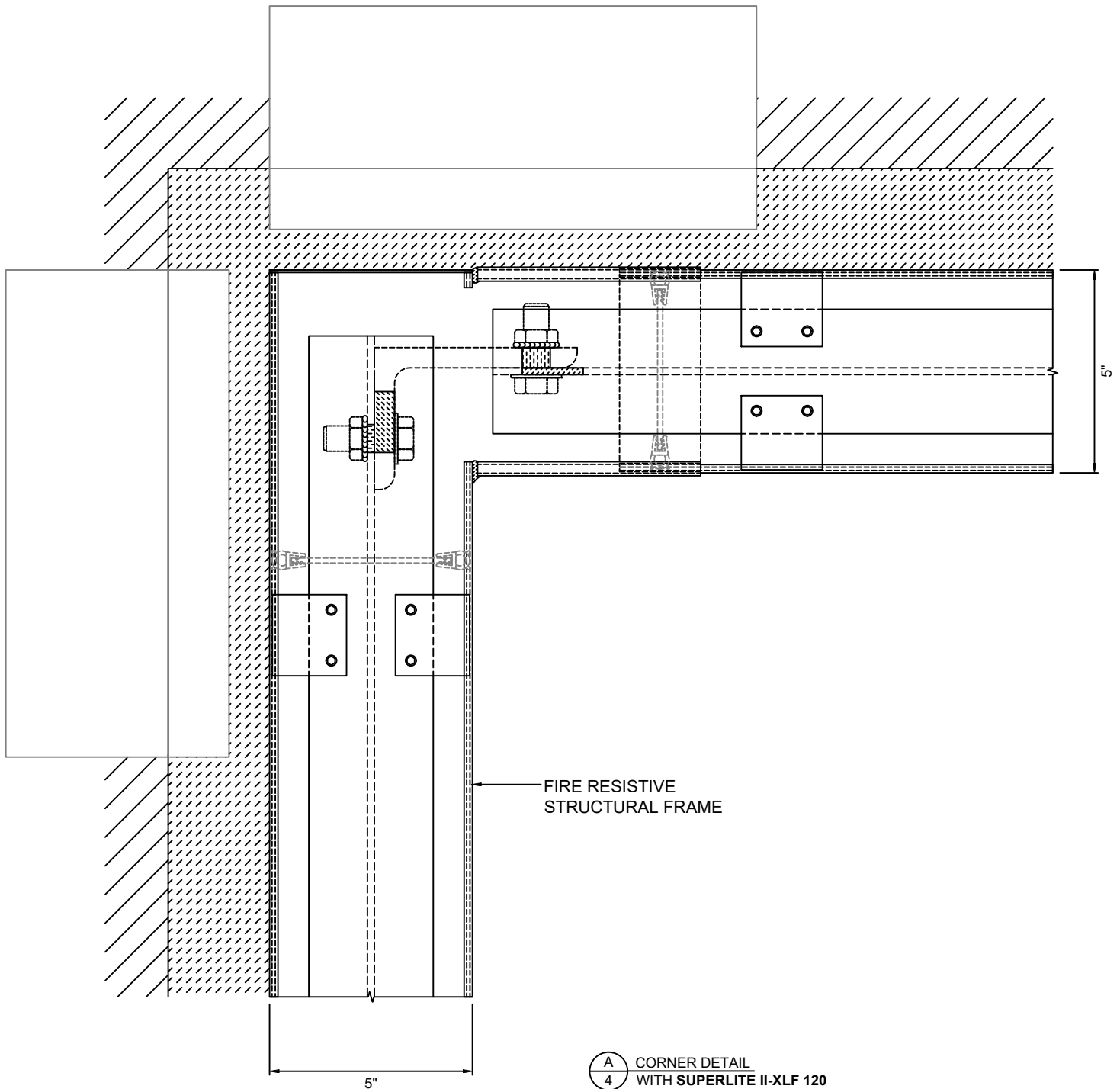
# GPX FIRE FLOOR

## 120 MINUTE *FIRE RESISTIVE* FLOOR SYSTEM



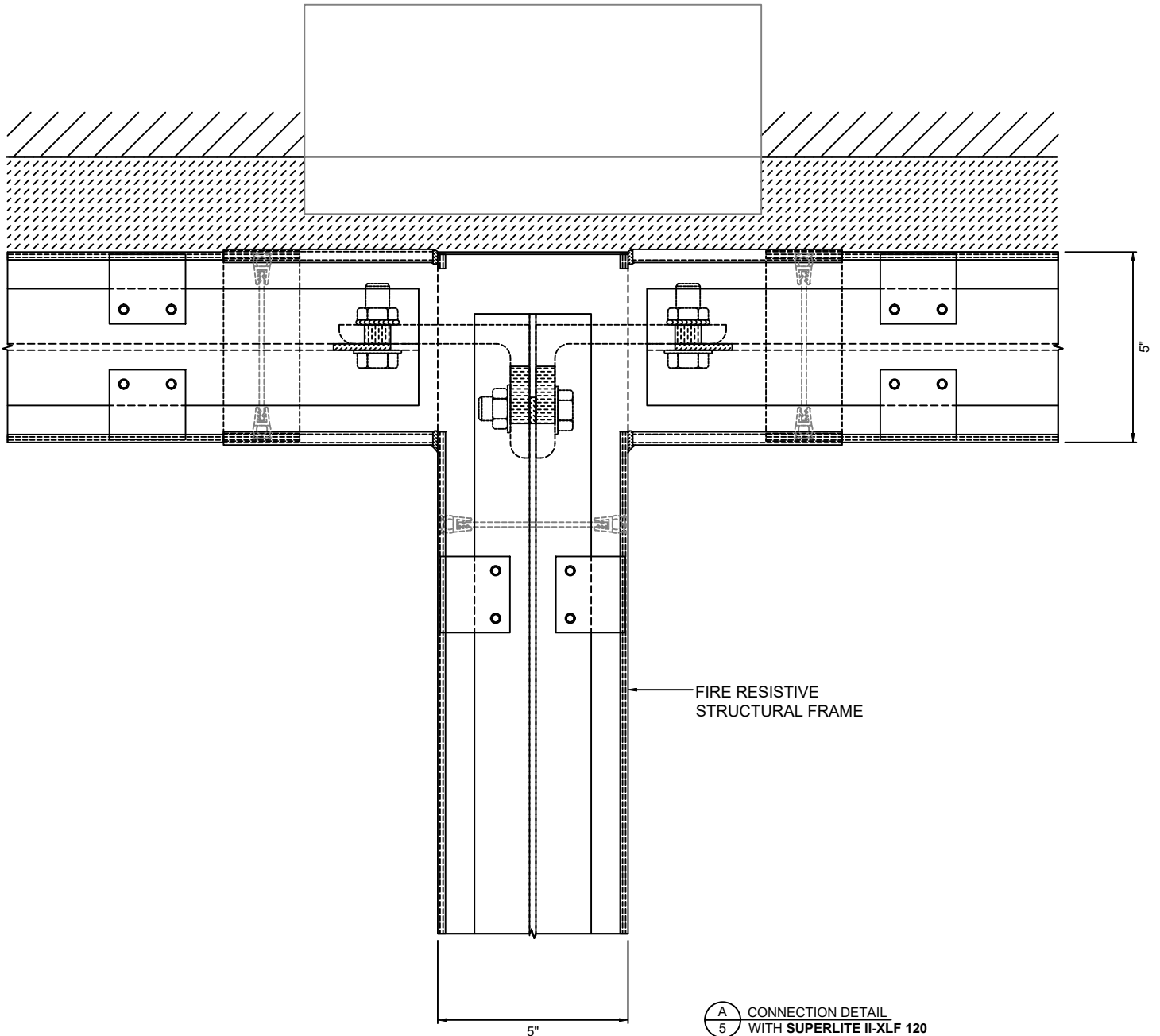
# GPX FIRE FLOOR

## 120 MINUTE *FIRE RESISTIVE* FLOOR SYSTEM



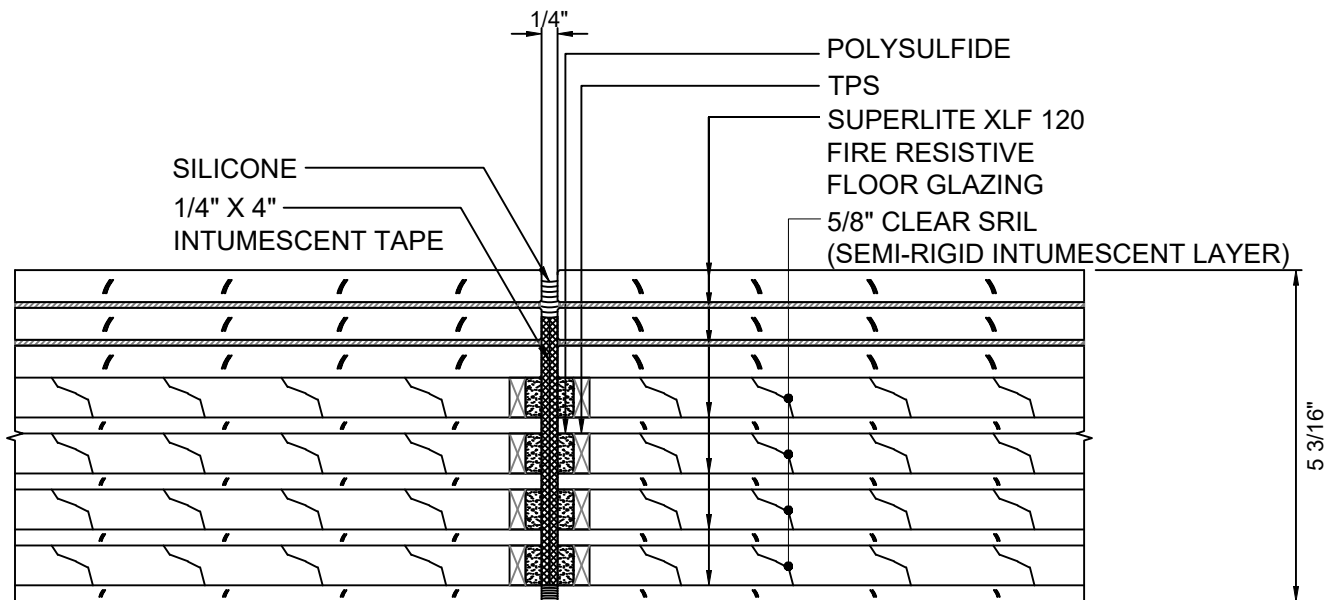
# GPX FIRE FLOOR

## 120 MINUTE *FIRE RESISTIVE* FLOOR SYSTEM



# GPX FIRE FLOOR

## 120 MINUTE *FIRE RESISTIVE* FLOOR SYSTEM



(A)  
6 BUTT-GLAZED JOINT  
WITH **SUPERLITE II-XLF 120**