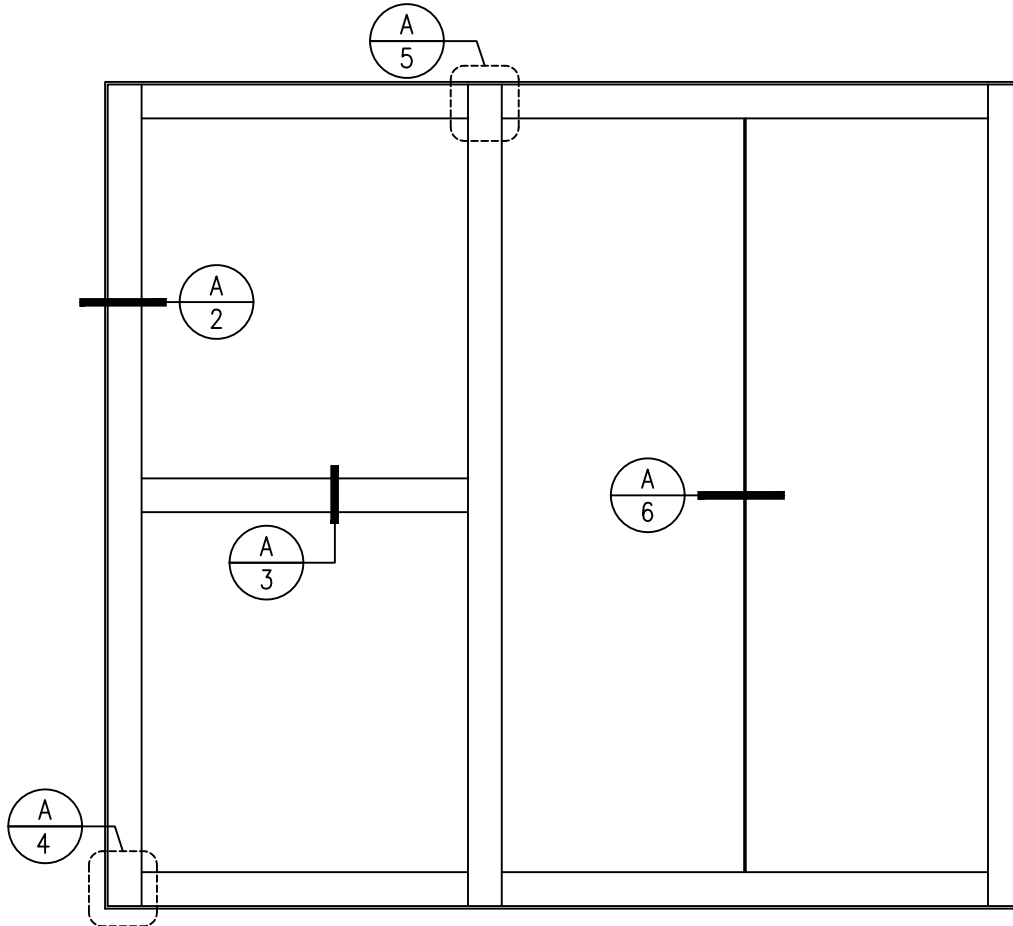


GPX FIRE FLOOR

60 MINUTE *FIRE RESISTIVE* FLOOR SYSTEM

GPX FIREFLOOR WITH SUPERLITE II-XLF 60



GLASS TYPE

(A) SUPERLITE II-XLF 60

MAX. INDIVIDUAL PANEL PER AREA: **7,017.3 SQ. IN. FULLY SUPPORTED**

MAX. INDIVIDUAL PANEL PER AREA: **4,763.9 SQ. IN. BUTT-GLAZED**

****Span Table and Loading Criteria for GPX Fire Floor- 60 Minute**

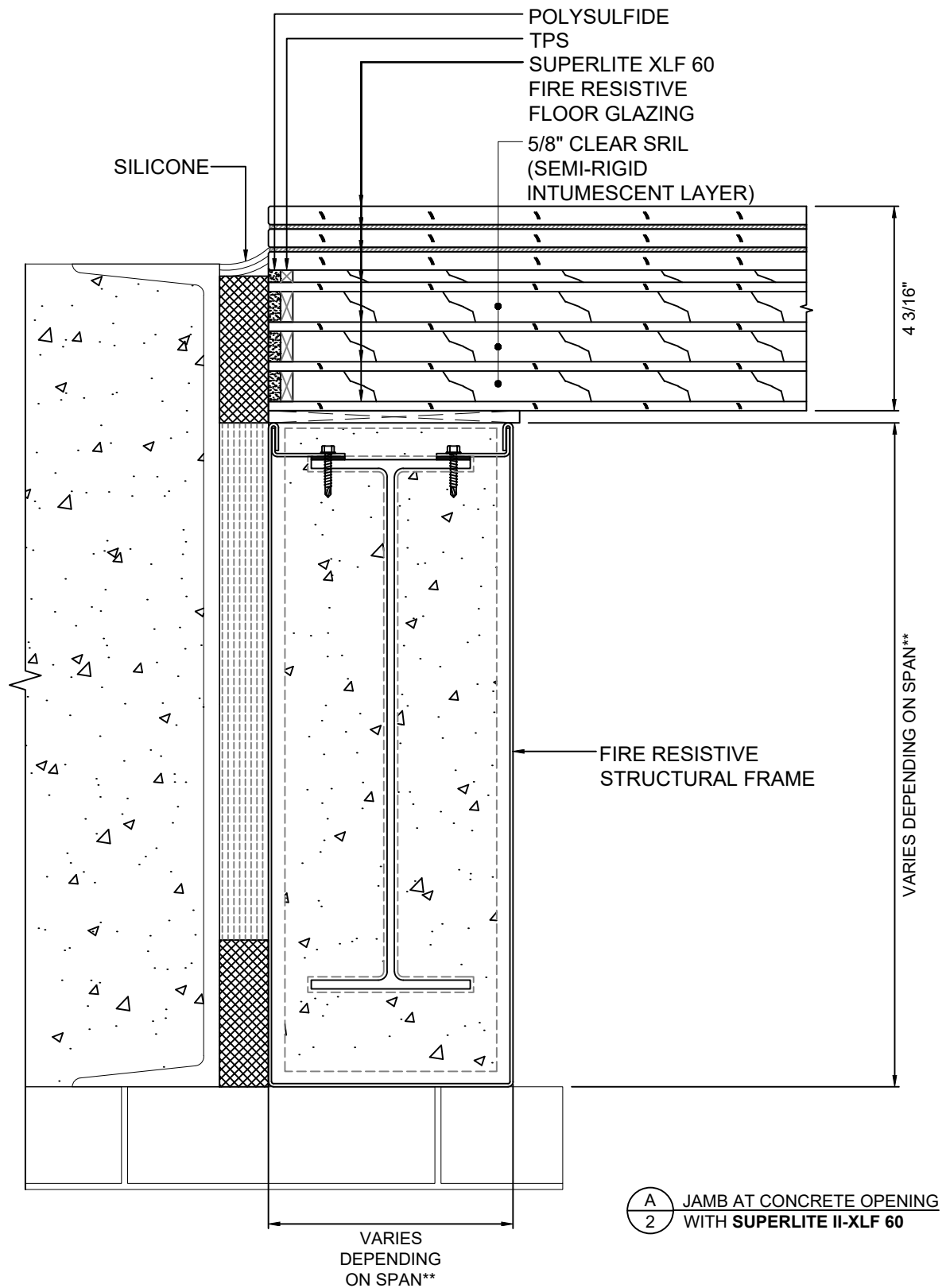
SPAN	3 ft. 0 in.	6 ft. 0 in.	10 ft. 0 in.	15 ft. 0 in.	20 ft. 0 in.	40 ft. 0 in.
I-Beam Shape	M3x2.9	M4x6	M10x7.5	M12x10.8	M12x19	W21x48
Flange Width	2.25 in.	3.8 in.	2.69 in.	3.07 in.	4.01 in.	8.14 in.
Flange Thickness	0.13 in.	0.16 in.	0.173 in.	0.21 in.	0.35 in.	0.43 in.
Overall Depth	3 in.	3.8 in.	10 in.	12 in.	12.2 in.	20.6 in.
Web Thickness	0.09 in.	0.13 in.	0.13 in.	0.16 in.	0.235 in.	0.35 in.

Loading Criteria: 35 lbs./sq.ft dead load • 100 lbs./sq.ft live load

For spans greater than 40 ft. please contact SAFTI FIRST.

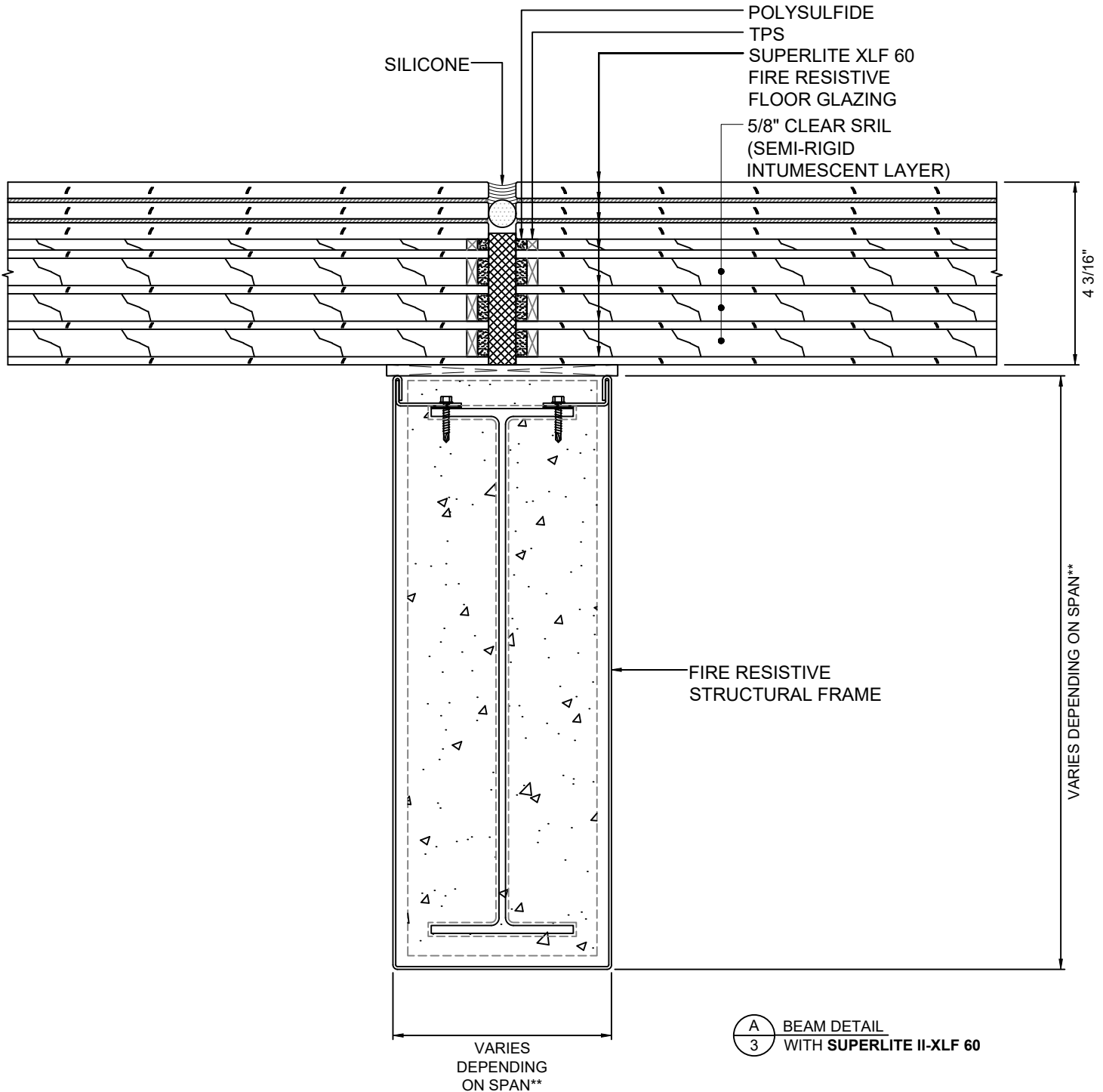
GPX FIRE FLOOR

60 MINUTE FIRE RESISTIVE FLOOR SYSTEM



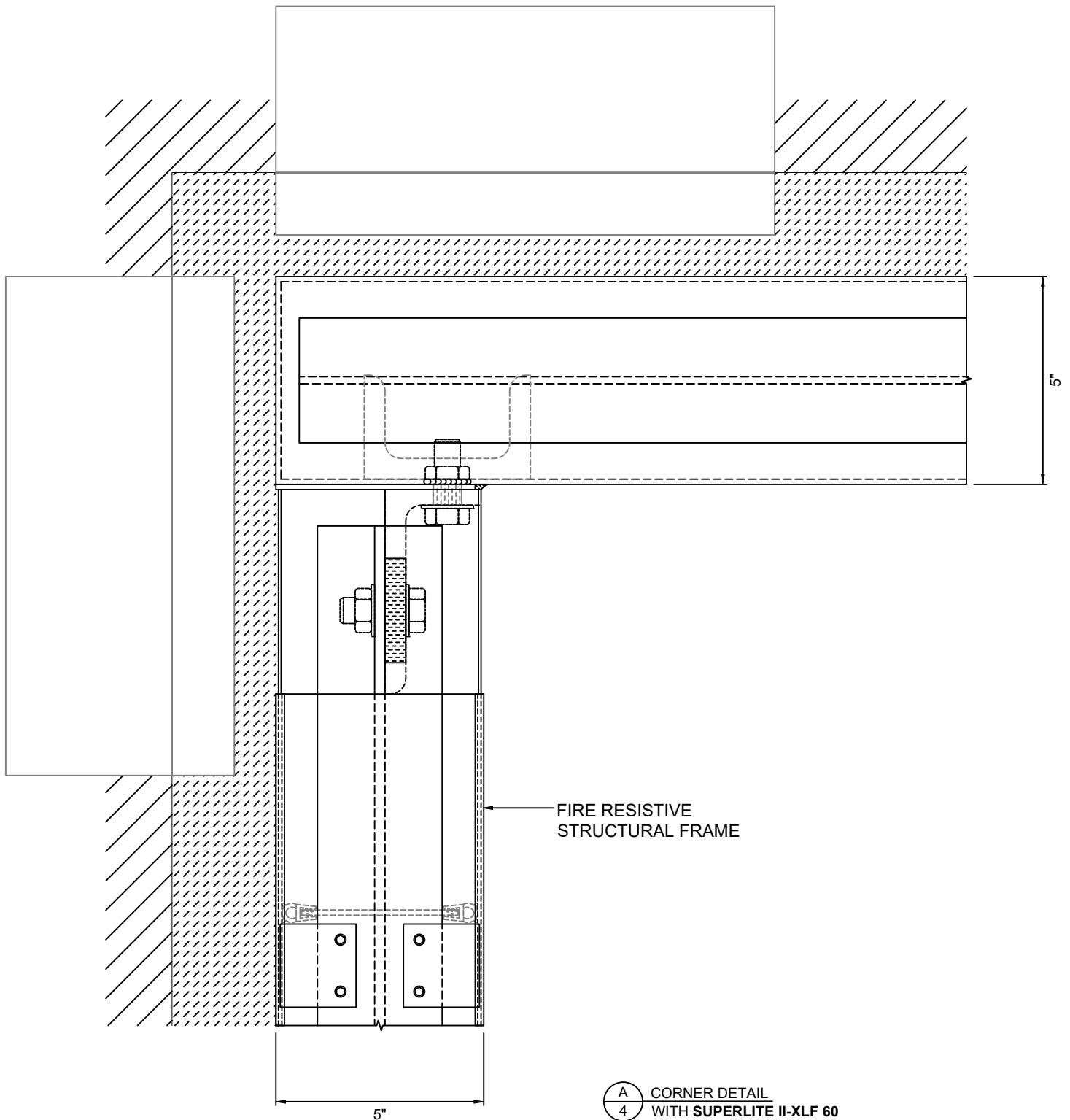
GPX FIRE FLOOR

60 MINUTE *FIRE RESISTIVE FLOOR SYSTEM*



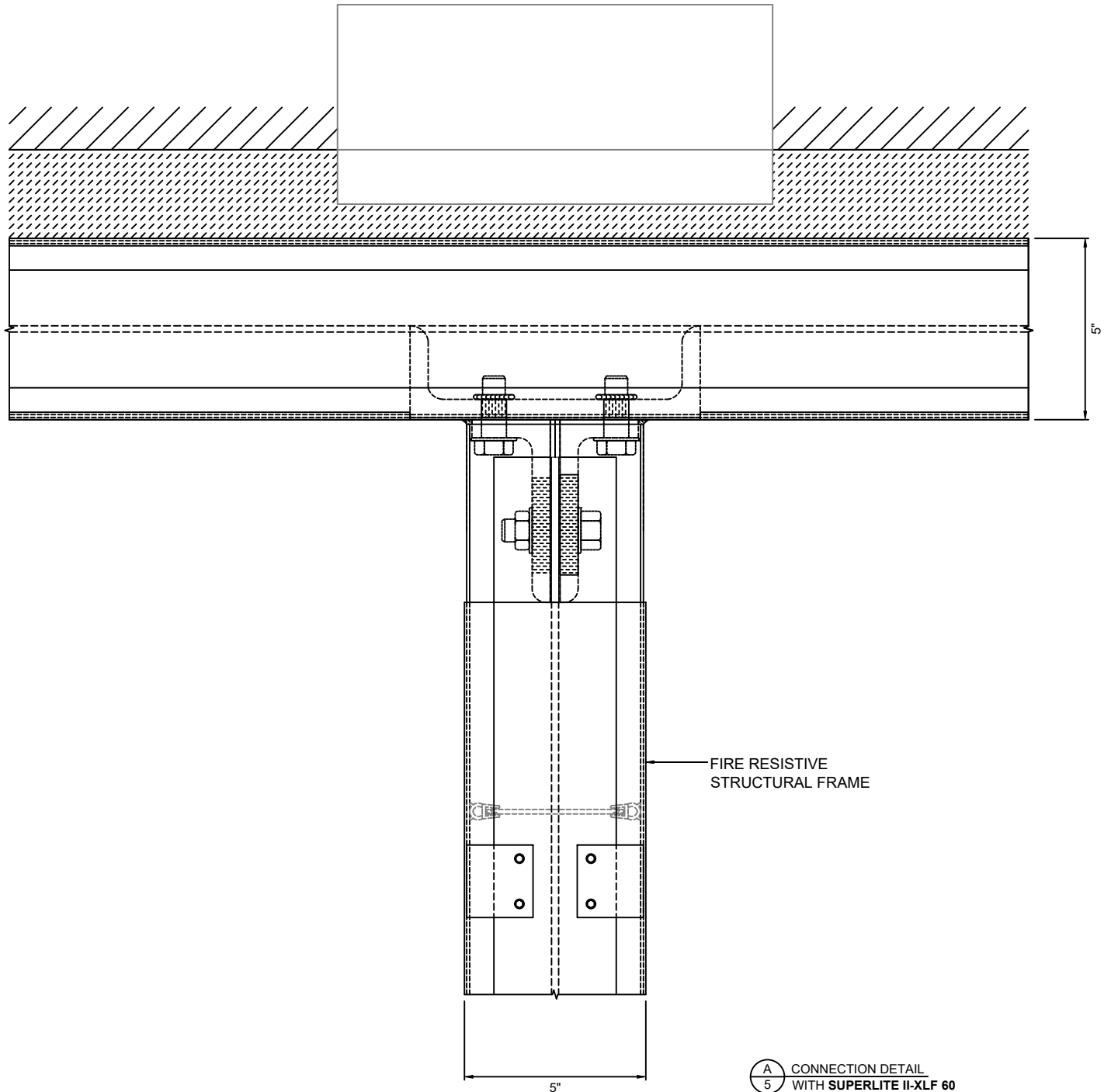
GPX FIRE FLOOR

60 MINUTE *FIRE RESISTIVE* FLOOR SYSTEM



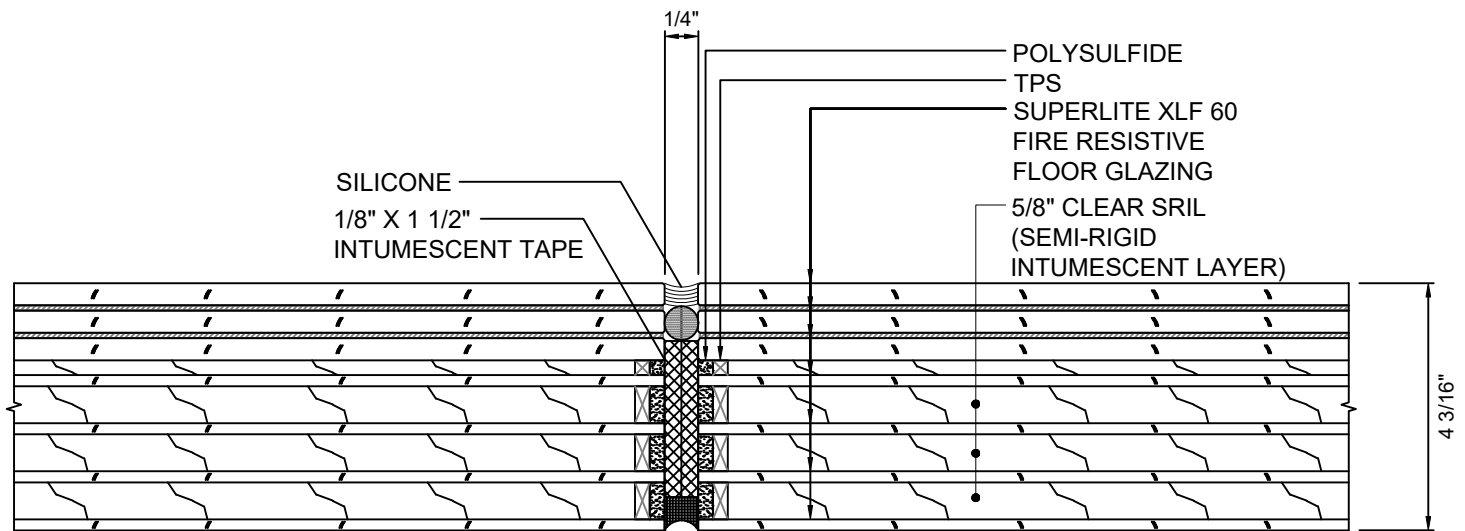
GPX FIRE FLOOR

60 MINUTE *FIRE RESISTIVE* FLOOR SYSTEM



GPX FIRE FLOOR

60 MINUTE *FIRE RESISTIVE* FLOOR SYSTEM



(A) BUTT-GLAZED JOINT
6 WITH **SUPERLITE II-XLF 60**