

PRODUCT ADVANTAGES



FIRE RATED



THERMAL SHOCK



POSITIVE PRESSURE

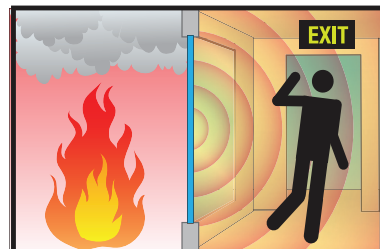
- ▶ 20-45 minute fire protective aluminum framing for doors, sidelites, transoms and openings.
- ▶ 20 minute doors glazed with SuperLite® I (20 minute clear, specialty tempered safety glazing). SuperLite® I is also available with Starphire® Ultra-Clear Glass by Vitro, and various glass patterns.
- ▶ Tested to UL 9 / NFPA 257 and UL 10B / UL 10C / NFPA 252.
- ▶ 45 minute sidelites, transoms and openings glazed with SuperClear® 45-HS (hose stream), SuperClear® 45-HS-LI (hose stream, low-iron) or SuperLite® II-XL 45. Other fire protective glazing can be used upon request.
- ▶ SuperLite® II-XL 45 in GPX® Architectural Series Fire Resistive framing can be used in W-30 applications in the IBC because the assembly meets ASTM E119 / UL 263.
- ▶ It is available in standard and custom finishes including high performance paint by PPG, clear anodized, bronze anodized, black anodized, Decoral®, wood veneer, ornamental metal and more.
- ▶ Doors delivered factory glazed and prepped for hardware for easy installation.
- ▶ Frames delivered K-D standard. Pre-assembly available upon request.
- ▶ Can be used for interior and exterior applications.
- ▶ Standard 5 year limited warranty.
- ▶ USA manufactured for fast lead times and competitive pricing.

Fire Rating	Glazing	Application	Max. CV Area	Max. CV Width	Max. CV Height
45 minutes	SuperClear® 45-HS SuperClear® 45-HS-LI	Sidelites, Transoms, Windows/Openings	3,880 in. ² (2.50 m ²)	96 in. (2.44 m)	96 in. (2.44 m)
45 minutes	SuperLite® II-XL 45	Sidelites, Transoms, Windows/Openings	4,952 in. ² (3.19 m ²)	124 in. (3.15 m)	124 in. (3.15 m)
45 minutes	SuperLite® I-XL* SuperLite® I-XL IGU*	Sidelites, Transoms, Windows/Openings	5,790 in. ² (3.72 m ²)	96 in. (2.44 m)	96 in. (2.44 m)
Fire Rating	Glazing	Application	Max. Door Opening (Single Door)	Max. Door Opening (Pair Door)	
20 minutes	SuperLite® I	Doors	48 in. x 108 in. (1.22 m x 2.74 m)	96 in. x 108 in. (2.44 m x 2.74 m)	

*SuperLite® I-XL and SuperLite® I-XL IGU may require AHJ approval for applications over 20 minutes as it is tested without hose stream.

FIRE PROTECTIVE

Contains smoke and flames
Does not block radiant heat.



For fire resistive framing that blocks radiant heat see HMTR (doors only) or GPX®.

SPECIFICATIONS

Fire Rating: 20 minute fire protective doors; 45 minute fire protective sidelites, transoms and windows/openings with hose stream

Weight: 12 lbs. / sq. ft. (59 kg/m²) for 45 minute sidelites, transoms and windows/openings

Door Profile: 5 in. (127 mm) stile;
5-1/2 in. (139.7 mm) top rail;
1-3/4 in. (44.45 mm) depth

Frame Profile: 2-1/2 in. (64 mm) equal sightlines

Bottom Rail: 10 in. (254 mm) ADA compliant*
*Bottom rail can be modified with AHJ approval

3-Part Specifications:

Available at
www.safti.com/specifications

APPROVALS

ASTM E152, ASTM E2074, NFPA 80, NFPA 252, NFPA 257, UL 9, UL 10B, UL 10C, ULC CAN4-S104, ULC CAN4-S106 CPSC 16 CFR 1201 Cat. II., ANSI Z97.1

TESTED AND CERTIFIED



GPX® Architectural Series Fire Protective is listed and labeled by Intertek, a nationally recognized testing laboratory approved by OSHA.



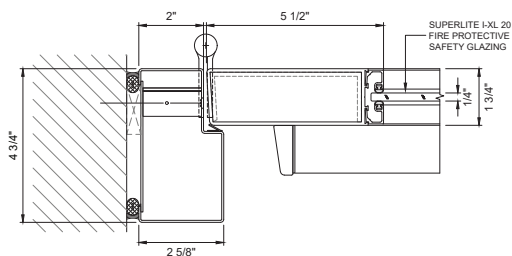
Made in the USA



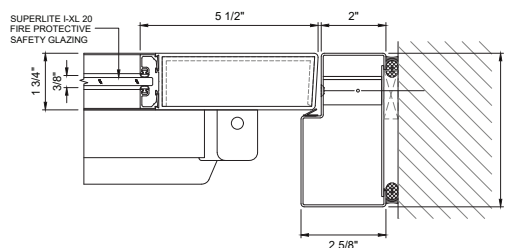
The GPX® Architectural Series Fire Protective 20 minute aluminum door is a full vision, stile and rail door that incorporates SuperLite I clear specialty tempered glazing. SuperLite® I with PPG Starphire® Ultra-Clear Glass and SuperLite® pattern glass are also available glazing options. Fully listed and labeled by Intertek this product meets NFPA 252, UL 10C for positive pressure, and CPSC Cat. II impact safety (with SuperLite® I glazing).

TYPICAL DETAILS *More details available at www.safti.com/details*

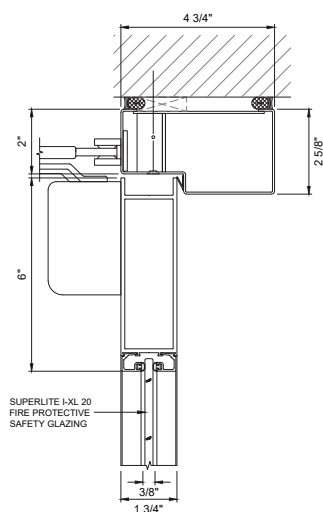
SuperLite® I in GPX® Architectural Series Fire Protective Door



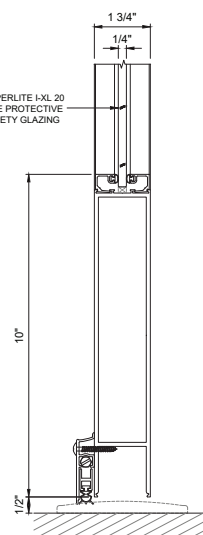
Door Jamb at Hinge Detail



Door Jamb at Lock Detail



Door Top Rail



Door Bottom Rail