

SuperLite® II-XLM 120

**120 Minute Fire Resistive
Multilaminate Glazing**

PRODUCT ADVANTAGES



- ▶ Fire resistive multilaminate glazing offering maximum fire and safety with hose stream for 120 minute wall applications.
- ▶ Meets ASTM E-119 for full radiant heat protection and CPSC Cat. II (400 ft. lbs.) impact safety requirements.
- ▶ Can be used in interior and exterior applications, including clear butt-glazed walls for maximum vision and transparency.
- ▶ Optically clear glazing without wires or tints.
- ▶ Can be easily incorporated in GPX® Architectural Series Framing, GPX® SNAPCAP or GPX® Builders Series Temperature Rise Framing for a complete fire resistive assembly.
- ▶ Standard 5 year limited warranty.

Large Sizes for Sidelites, Windows, Transoms and Walls

Fire Rating	Max. CV Area	Max. CV Width	Max. CV Height	Stops
120 minute wall (with framing and butt-glazed)	4,256 in. ² (2.75 m ²)	38 in. (0.97 m)	112 in. (2.84 m)	1 in. (25.4 mm)

UL AND INTERTEK TESTED AND CERTIFIED



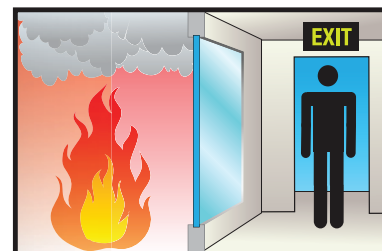
SuperLite® II-XLM is listed and labeled by Intertek and Underwriters Laboratories, nationally recognized testing laboratories approved by OSHA.

APPROVALS

UL 9, UL 10B, UL 10C, UL 263, NFPA 80, NFPA 251, NFPA 252, NFPA 257, ASTM E119, ASTM E152, ASTM E163, ASTM E2074, ASTM E2010-01, CPSC 16 CFR 1201 Cat. II, ANSI Z97.1, ULC CAN4-S101, ULC CAN4-S104, ULC CAN4-S106.

FIRE RESISTIVE

Contains smoke, flames and blocks the passage of radiant heat.



SPECIFICATIONS

Thickness: 2-1/8 in. (53 mm) standard

Weight: 25 lbs./sq. ft. (122 kg/m²)
in 2-1/8 in. (53 mm) standard

Sound Reduction: Rw=46 dB

Fire Rating: 120 minutes with hose stream
Meets ASTM E119, NFPA 251 and UL 263

Impact Safety Rating:

CPSC 16 CFR 1201 Cat. I and II,
ANSI Z97.1

Light Transmission: 71%

R-value: 1.18

U-value: 0.845

3-Part Specifications:

Available at

www.safti.com/specifications

SuperLite® II-XLM 120

**120 Minute Fire Resistive
Multilaminate Glazing**



Project: Waste Management Headquarters in Houston, TX

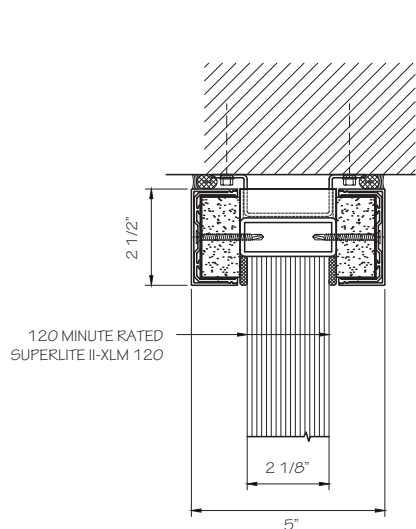
Architect: Perkins + Will

Contract Glazier: Lakeview Glass and Mirror

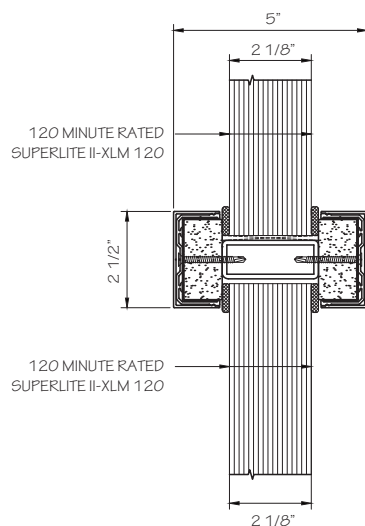
Products Used: SuperLite® II-XL 90 in
GPX® Builders Series Temperature Rise Doors and
SuperLite® II-XLM 120 in GPX® Architectural Series Wall

TYPICAL DETAILS *More details available at www.safti.com/details*

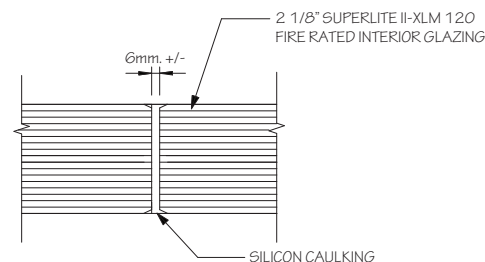
SuperLite® II-XLM 120 in GPX Architectural Series Framing



Head Detail



Horizontal Mullion Detail



Butt-Joint Detail

Details not to scale.

The information provided herein is for general reference only and is subject to change without notice. Please visit www.safti.com for the most up to date information.

© SAFTI FIRST™ August 2023