

SuperLite® II-XLM 60

**60 Minute Fire Resistive
Multilaminate Glazing**

PRODUCT ADVANTAGES



- ▶ Fire resistive multilaminate glazing offering maximum fire and safety with hose stream for 60 minute wall and door applications.
- ▶ Meets ASTM E-119 for full radiant heat protection and CPSC Cat. II (400 ft. lbs.) impact safety requirements.
- ▶ Can be used in interior and exterior applications, including clear butt-glazed walls for maximum vision and transparency.
- ▶ Optically clear glazing without wires or tints.
- ▶ Can be easily incorporated in GPX® Architectural Series Framing, GPX® SNAPCAP or GPX® Builders Series Temperature Rise Framing for a complete fire resistive assembly.
- ▶ Standard 5 year limited warranty.

Large Sizes for Doors, Sidelites, Windows, Transoms and Walls

Fire Rating	Max. CV Area	Max. CV Width	Max. CV Height	Stops
60 minute doors	3,855 in. ² (2.49 m ²)	87-5/8 in. (2.23 m)	87-5/8 in. (2.23 m)	5/8 in. (16 mm)
60 minute walls (with framing and butt-glazed)	3,855 in. ² (2.49 m ²)	87-5/8 in. (2.23 m)	87-5/8 in. (2.23 m)	1 in. (25.4 mm)

UL AND INTERTEK TESTED AND CERTIFIED



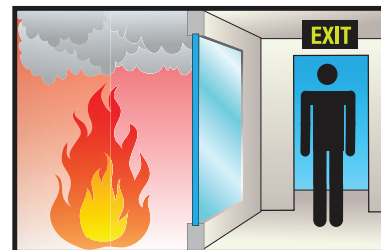
SuperLite® II-XLM is listed and labeled by Intertek and Underwriters Laboratories, nationally recognized testing laboratories approved by OSHA.

APPROVALS

UL 9, UL 10B, UL 10C, UL 263, NFPA 80, NFPA 251, NFPA 252, NFPA 257, ASTM E119, ASTM E152, ASTM E163, ASTM E2074, ASTM E2010-01, CPSC 16 CFR 1201 Cat. II, ANSI Z97.1, ULC CAN4-S101, ULC CAN4-S104, ULC CAN4-S106.

FIRE RESISTIVE

Contains smoke, flames and blocks the passage of radiant heat.



SPECIFICATIONS

Thickness: 1 in. (25 mm) standard

Weight: 12.3 lbs./sq. ft. (60 kg/m²)
in 1 in. (25 mm) standard

Sound reduction: Rw=42 dB

Fire Rating: 60 minutes with hose stream
Meets ASTM E119 and NFPA 251

Impact Safety Rating:
CPSC 16 CFR 1201 Cat. I and II,
ANSI Z97.1

Light Transmission: 81%

R-value: 1.14

U-value: 0.881

3-Part Specifications:
Available at
www.safti.com/specifications

SuperLite® II-XLM 60

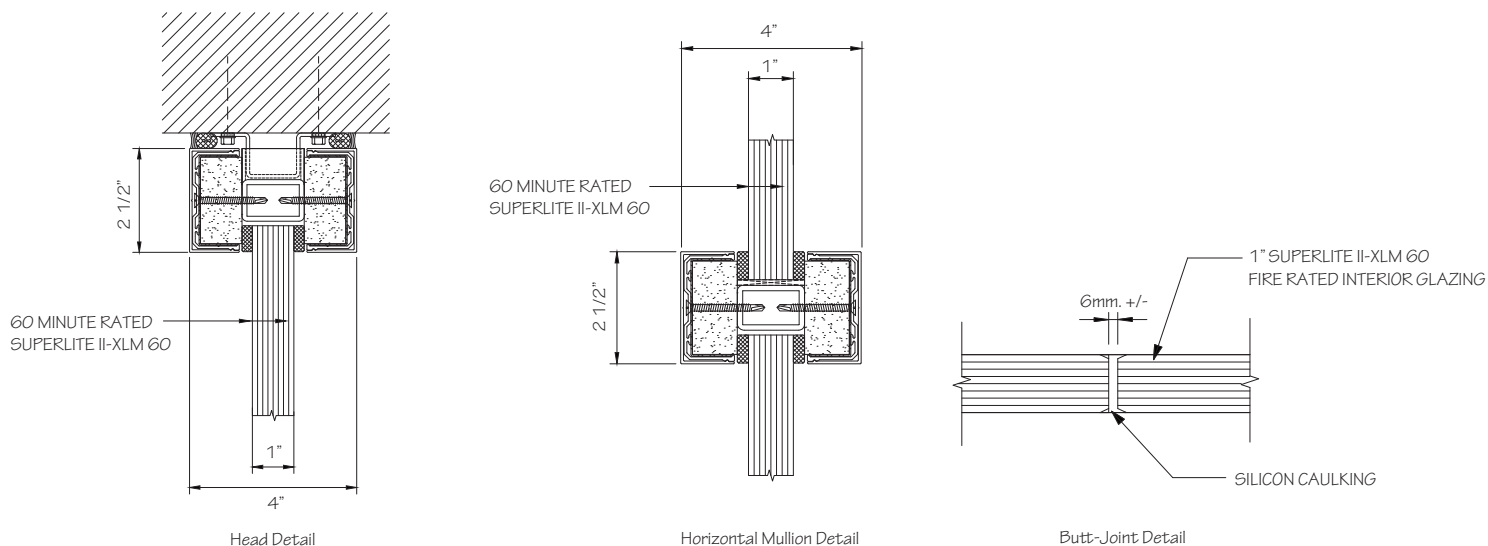
60 Minute Fire Resistive
Multilaminate Glazing



SuperLite® II-XLM 60 in a 1-hour
butt-glazed wall application

TYPICAL DETAILS *More details available at www.safti.com/details*

SuperLite® II-XLM 60 in GPX® Architectural Series Framing



Details not to scale.

© SAFTI FIRST® August 2023

The information provided herein is for general reference only and is subject to change without notice. Please visit www.safti.com for the most up to date information.

www.safti.com

SAFTI FIRST
SAFETY AND FIRE TECHNOLOGY INC.

888.653.3333